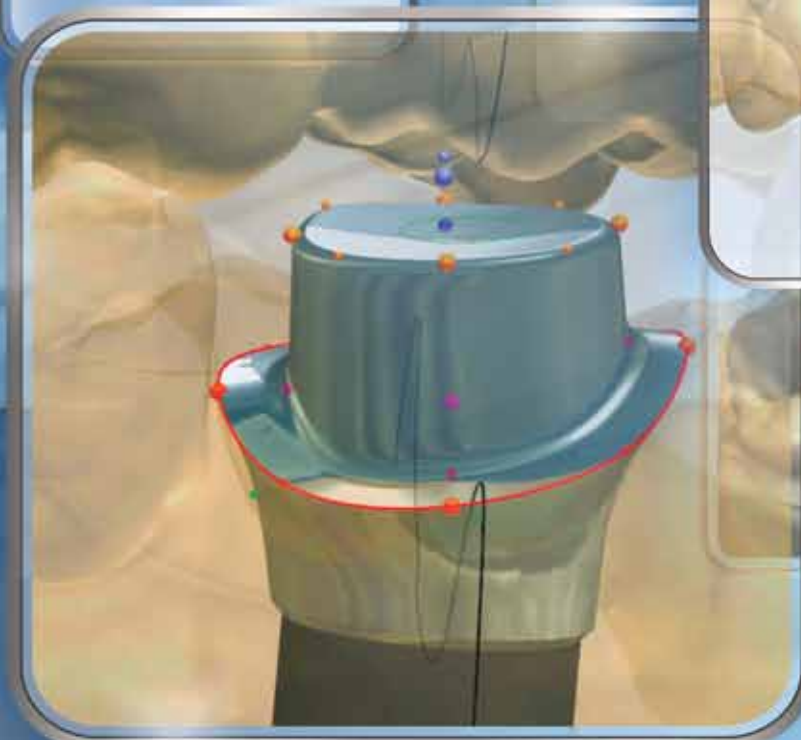
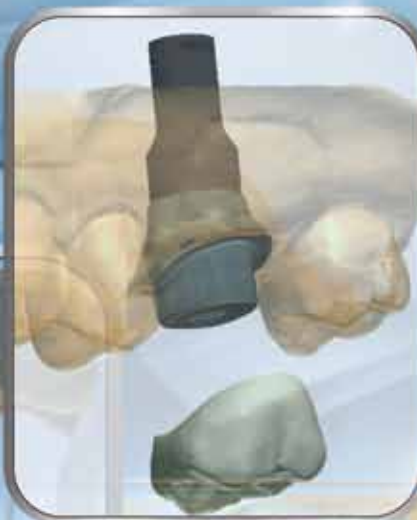
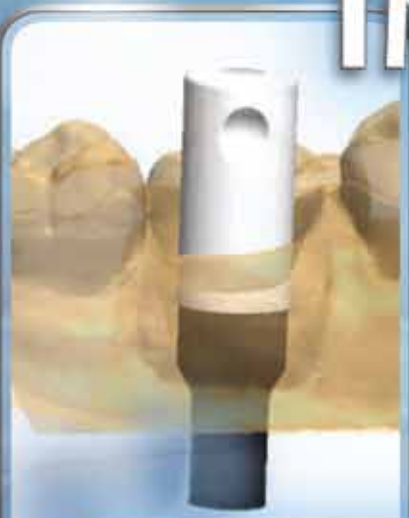




focus

IMPLANTS

Made EASY

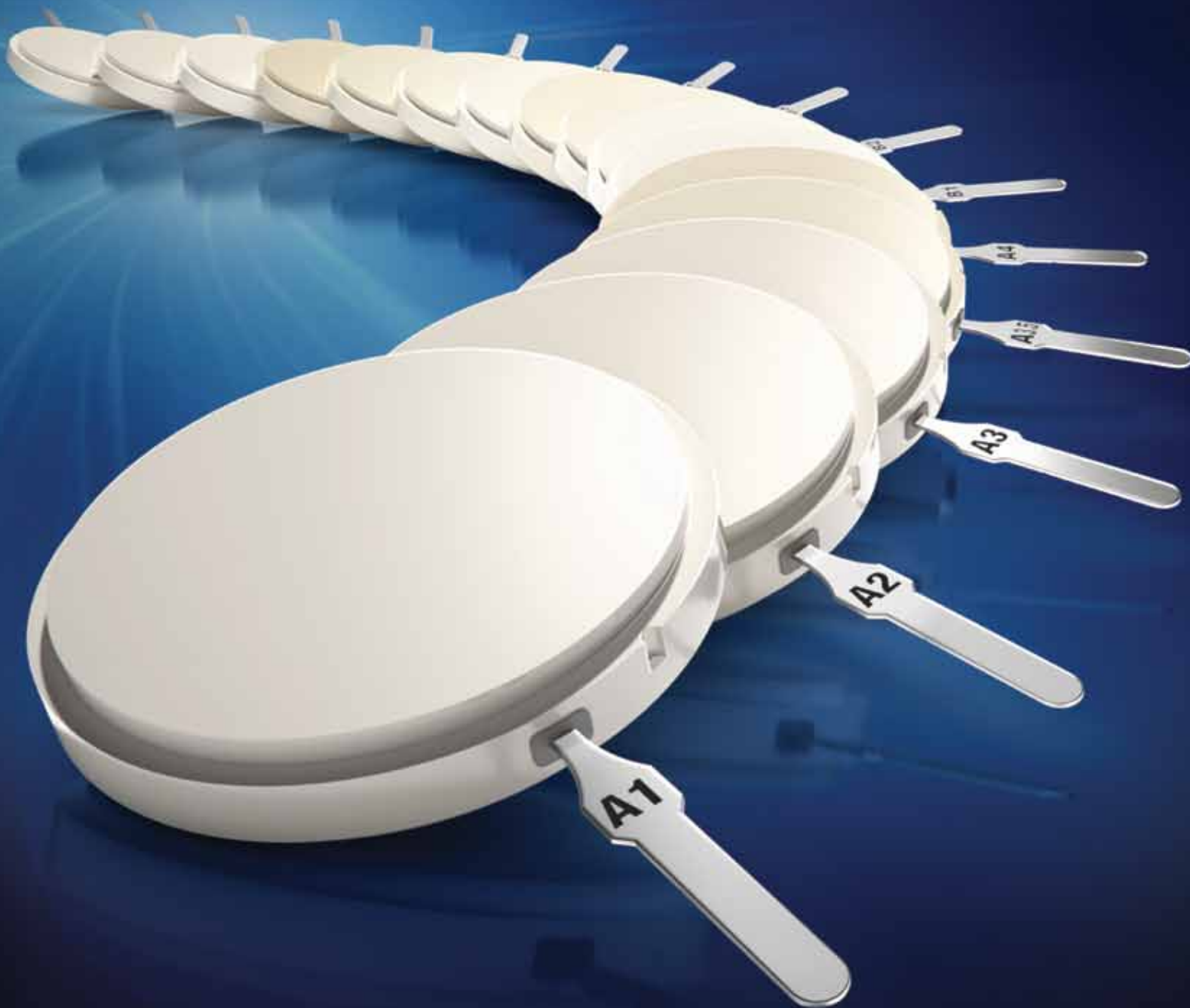


 **Southern States**
SYMPOSIUM & EXPO
presented by FDIA

**REGISTRATION
INFORMATION**

included on page 31 inside.

True color technology.



- Cercon® ht zirconia delivers **color confidence** for zirconia restorations to match the Vita® shade standard
 - True color technology based on DENTSPLY's breadth of knowledge in ceramic shading
 - 15 years of zirconia formulation experience for optimal milling performance for open machines
 - Cercon® ht zirconia can help you create highly satisfied dentists through our proven shade accuracy
- That's Lab Smarter®.**

*Vita® is a registered trademark of Vita Zahnfabrik H. Rauter GmbH & Co.



DENTSPLY

cercon® ht
Shaded Zirconia

Implementing a Digital Workflow into Your Lab



FDLA President Gail Perricone, her son Andrew Perricone, and the GPS Mascot, Buddy.

The phrase “digital dentistry is here to stay” is something we hear time and time again. We need to embrace this technology and learn it to the best of our ability. We older, more seasoned technicians tend to think it is a fad and will soon run its course, but I am here to tell you differently.

We implemented CAD/CAM three years ago after my son and I returned from the Cal-Lab meeting. On the plane ride home, my son looked at me and said, “When we get back to the lab, no more waxing and casting!”

Check out some of the latest digital dentistry offerings, new products and state-of-the-art technology...

and a quicker turnaround time. By next month, we expect to be designing and printing our metal partial frames, and who knows what's next?

You'll find out at the Southern States Symposium & Expo. Everything you need to know about the symposium and expo is in the brochure in this issue of focus. In addition to all of the great seminars and hands-on workshops, you'll have the opportunity to check out some of the latest digital dentistry offerings, new products and state-of-the-art technology in the expo hall. Plus, you can't beat the symposium and expo's unparalleled opportunity to connect and catch up with your fellow dental laboratory professionals. We can't wait to see you there!



By Gail Perricone

GPS Dental Lab Inc.
FDLA president

Our first venture was a 3Shape scanner. We sent all of our .STL files to a milling center. At first, it was just for zirconia restorations, but, we started sending our alloy restorations, too. Two years ago, we expanded the lab and added the Sirona system and mill. This allowed us to start connecting with CEREC dentists. Since then, we have added two more mills and another 3Shape scanner.

Currently, we are scanning and designing practically all of our zirconia and metal crowns, bridges and implants. This has enabled us to double our production with consistency

FDLA Mission

Serving Florida's dental technology professionals as a valued part of the dental team enhancing oral health care.

FDLA Vision

Advancing the individual and collective success of Florida's dental technology professionals in a changing environment.

Values Statement

FDLA's board of directors and professional staff are guided by these principles:

- Integrity
- Leadership
- Recognition
- Safety
- Acceptance
- Innovation

focus

Florida Dental Laboratory
Association
325 John Knox Rd,
Ste L103
Tallahassee, FL 32303
Phone: 850-224-0711
Fax: 850-222-3019

Southern States Symposium & Expo Office

866-873-3352
E-mail:
membership@fdla.net
Web site: www.fdla.net

Published quarterly by the
Florida Dental Laboratory
Association. The FDLA
is not engaged in legal,
accounting, financial or
other professional
counseling and readers
are cautioned to contact
their professional advisors
for advice. FDLA simply
gathers information from
various sources to keep
the membership informed.

focus Staff

**Jillian Heddaeus, CMP,
IOM**
Executive Director &
focus Publisher
jillian@fdla.net

Bennett E. Napier, CAE
Senior Advisor
bennett@fdla.net

Cassandra Corcoran
Editor
editor@fdla.net

Maureen Turner
Advertising Sales
advertising@fdla.net

Christina Welty
Program Manager
membership@fdla.net



6 Occlusal Splint Fabrication

By James Wells, CDT

8 Implants Made Easy

By Daniel Alter, MSc, MDT, CDT

12 Bridging the Generation Gap with New Hires

By Kate Zabriskie

14 Soft Tissue Sculpting With A PreFormance® Post For Fabrication Of A Patient Specific Restoration® With Encode® Complete

By Jon A. Ruel, DMD, MScD

26 The Hub

FDLA news and recent happenings.

28 Zero-In, Classifieds

FDLA calendar and classifieds.

30 Focal Point

Meet FDLA's Incoming President Fernando de Leon

31 Southern States Symposium & Expo Registration Brochure

Advertisers Directory

Atlanta Dental Supply page 23
www.atlantadental.com

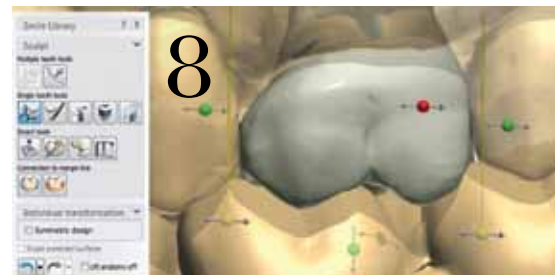
The Argen Corporation page 5
www.argen.com

Aurident, Inc. Outside Back Cover
www.aurident.com

DENTSPLY Prosthetics Inside Front Cover
www.dentsplyprosthetics.com



Like us on Facebook at facebook.com/floridadentallaboratoryassociation



Heraeus Kulzer Scrap Refining page 21
<http://mydental360.com/Refining>

Ivoclar Vivadent, Inc. pages 26 and 27
www.ivoclarvivadent.com

PREAT Corporation Inside Back Cover
www.preat.com

Safelink Consulting, Inc. page 29
www.safelinkconsulting.com

Zahn Dental page 25
www.zahndental.com

ARGEN ZTM ZIRCONIA

THE MOST ADVANCED Zirconia Technology

From
ARGEN[®]

**YOUR ONE STOP
ZIRCONIA
SHOP**
OPEN



Cosmetic and Restorative Solutions



ARGEN Z[®] ANTERIOR
Super Translucent Zirconia

Super Translucent
Exciting Option to Lithium Disilicate
Translucency: 50% Strength: 765 MPa

Sizes: 98 mm (95mm and 100mm coming soon)
Thicknesses: 10 12 14 16 18 20 25
Value Based Shades: D1 D2 D3 D4 D5 D6 D7 D8 D9 D10 D11 D12 D13 D14 D15 D16 D17 D18 D19 D20 D21 D22 D23 D24 D25 D26 D27 D28 D29 D30 D31 D32 D33 D34 D35 D36 D37 D38 D39 D40 D41 D42 D43 D44 D45 D46 D47 D48 D49 D50 D51 D52 D53 D54 D55 D56 D57 D58 D59 D60 D61 D62 D63 D64 D65 D66 D67 D68 D69 D70 D71 D72 D73 D74 D75 D76 D77 D78 D79 D80 D81 D82 D83 D84 D85 D86 D87 D88 D89 D90 D91 D92 D93 D94 D95 D96 D97 D98 D99 D100

Available in Shaded



ARGEN Z[®] ESTHETIC
High Translucent Zirconia

High Translucent
High Translucency for Beautiful Esthetics
Translucency: 40% Strength: 1100 MPa

Sizes: 98 mm (95mm and 100mm coming soon)
Thicknesses: 10 12 14 16 18 20 25
Shades: 16 Shaded Discs, white and bleach
Value Based Shades: B1 A1 A2 A3 A3.5 C1 C2 C3 D1 D2 D3 D4 D5 D6 D7 D8 D9 D10 D11 D12 D13 D14 D15 D16 D17 D18 D19 D20 D21 D22 D23 D24 D25 D26 D27 D28 D29 D30 D31 D32 D33 D34 D35 D36 D37 D38 D39 D40 D41 D42 D43 D44 D45 D46 D47 D48 D49 D50 D51 D52 D53 D54 D55 D56 D57 D58 D59 D60 D61 D62 D63 D64 D65 D66 D67 D68 D69 D70 D71 D72 D73 D74 D75 D76 D77 D78 D79 D80 D81 D82 D83 D84 D85 D86 D87 D88 D89 D90 D91 D92 D93 D94 D95 D96 D97 D98 D99 D100

Available in Shaded



ARGEN Z[®] ULTRA
High Strength Zirconia

High Strength
High Strength for Posterior Restorations
Translucency: 0% Strength: 1400 MPa

Sizes: 95 98 mm
Thicknesses: 10 12 14 18 20 22 25
Shades: White

Place your orders online at
www.argen.com

or call

(800) 255-5524

ARGEN[®]
www.argen.com

Occlusal Splint Fabrication

By James Wells, CDT

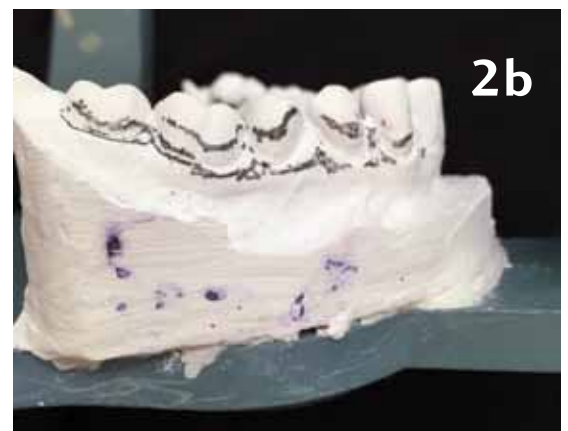
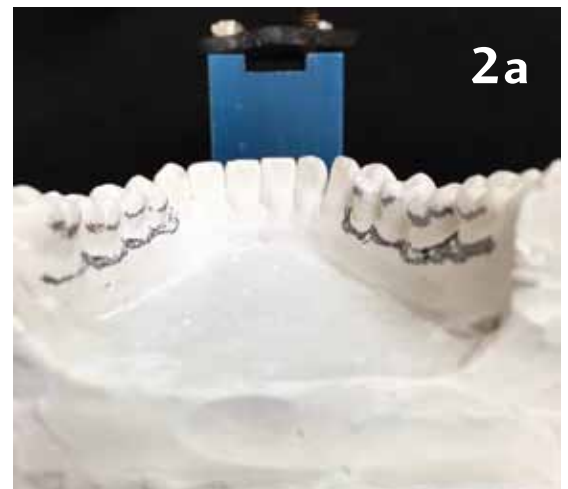
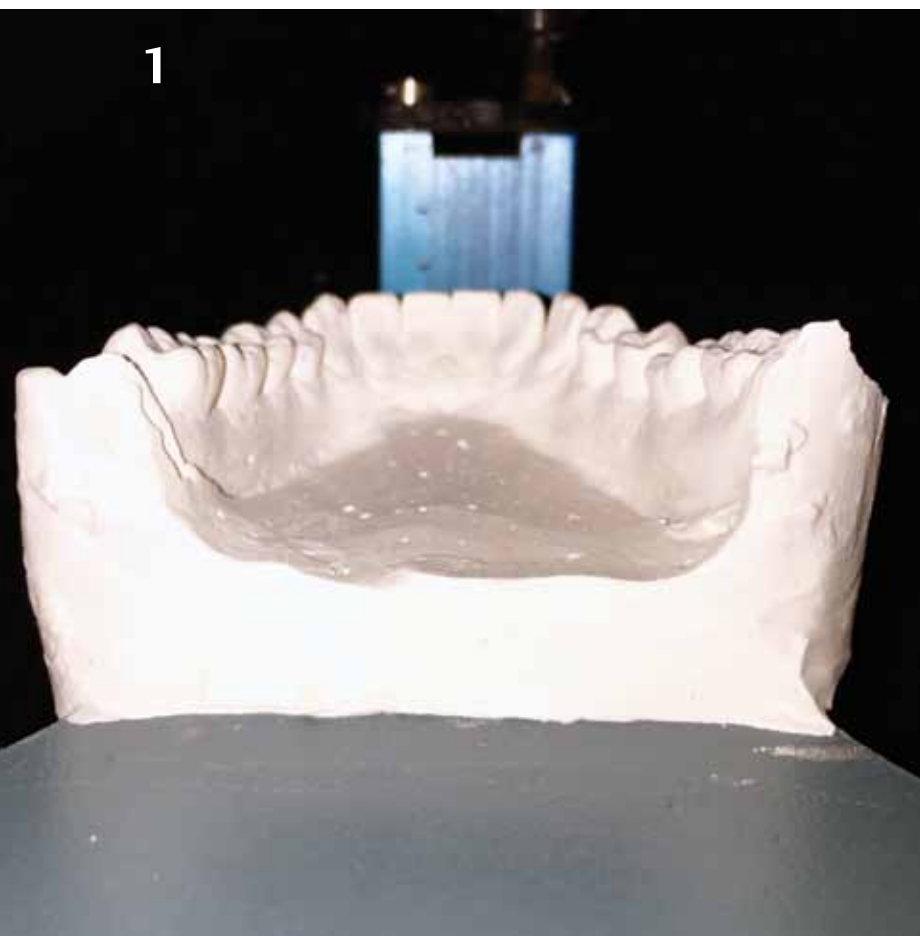
Occlusal splints/night guards have been a growing department in our lab for the past five years with a sharp increase in the past two years. Most labs I have spoken to about the subject tend to stay away from doing these appliances due to high percentage of remakes and returns of the appliance. This is due to the fact that splints have 365° coverage of the entire involved arch, therefore, it only takes one or two slight imperfections in the model or slight oversights with the model preparation to cause this appliance to have a poor fit.

Proper model preparation will help eliminate any patient discomfort and reduce the doctor's chairtime.

Regardless of the type of occlusal splint or the arch it is on, the model preparation will not change and we have found in our lab that doing the following will greatly increase quality and fit of the occlusal splints.

First, we survey the model to identify undercuts to be blocked out with regular base plate wax. In our lab, we don't use a surveyor as we have found that it can be done more accurately and faster free hand by an experienced technician. Once the models have been marked, then we flow the wax

into the undercut and trim away any excess after it cools. A small amount of wax is added to the inter-proximal areas to avoid sharp acrylic points. Also, we put a thin layer of wax over the facial and lingual surface area of the anterior teeth. Anyone who has worn a splint before is aware of the pressure and discomfort that patients feel on the anterior teeth when you wake up the next morning. Proper model preparation will help eliminate any patient discomfort and reduce the doctor's chairtime (**Figures 1-4**).





Next, the model will be boxed out to aid in pouring the acrylic. Once the undercuts have been blocked out, we then use a rope wax to set the height of contour of the acrylic. The rope wax should be pressed firmly onto the model and trimmed down to a smooth and even surface at the desired height. Finally, we cut a strip of baseplate wax and add it to the rope wax in order to create a pool for the acrylic to set in as it is poured. The acrylic will want to run all over the place if this process is not adhered to, causing a longer pour time for the appliance as well as a sloppy final product (**Figures 5-6**).

Finally, the model is ready to go to the acrylic department, where it will be poured in a cold cure acrylic and cured in a pressure pot at 115° for 20 minutes. The appliance is then finished and polished to the doctor's specifications (**Figure 7**).

Almost all splint issues are due to inaccuracies in the arch that they are fabricated on and not the arch that occludes into them. In our lab, all types of splints go through this process giving us great fitting splints that have sharply increased our splint sales. [i](#)





FIGURE 1

Implant scan flags to identify the implants location and orientation.

IMPLANTS

By Daniel Alter,
MSc, MDT, CDT

Made EASY

Dental implants have become an increasingly growing market within dentistry and dental laboratories. Those positioning themselves to provide comprehensive implant restorations are realizing great benefits for their business growth and revenues. This movement is facilitated because dental implants provide a conservative approach to restoring missing dentition without affecting adjacent teeth. With the adaption of CAD/CAM, these complex and often times difficult restorations are easily attained, while maintaining a consistent and repeatable treatment and manufacturing protocol. This article will discuss the digital workflow for restorative implant design and superior restorative materials, made available through digitizing the restorative manufacturing process.

The restorative process begins once the practicing dentist captures all the pertinent information and provides the laboratory with all that is necessary to restore. Currently, there are two methods of accomplishing this with CAD/CAM solutions. The first method is through means of a clinical intraoral data capture—utilizing an open architecture intraoral scanner will allow for the scan and software to identify the orientation and placement of the implant in the bone. The scanned intraoral data is then forwarded to the dental laboratory. This is accomplished by using implant specific geometric scan flags (**Figure 1**), which furnish the software with markers to orient the exact position of the implant. The second method of attaining this information is by using the same scan flags on a physical model and scanning it using a dental table top scanner. The scan flags are screwed into the implant intraorally, or the implant lab analog in a model, and then scanned.

Once the complete scan is attained, the digital workflow can commence by first annotating the implants restorative location and path of insertion. This process will establish parameters for design with regards to surface and proximal orientation. Once that is accomplished, the workflow progresses to establishing a pre-anatomy design, a function that provides the preplanning and implant emergence to the restored tooth portion's consideration. Depending on the type of implant restoration (whether it be a custom abutment split file with a crown, a layered screw-retain or a full contour screw-retained), the workflow to this point is identical. Subsequent workflow design steps, will correspond to the above mentioned restoration options and will be dictated by the proper indications within the order form, set up at the onset of the case.

Establishing the proper conical emergence of the implant and coronal portion is of utmost importance. The CAD software provides the user with tools to accomplish appropriate gingival contours to promote and propagate proper health to the tissue around the implant fixture. 3Shape CAD software allows for an easy flow and intuitive design tools to accomplish this. There are two options within the software for these indications.

1. The first being a custom abutment feature, which provides the user the ability to design an abutment similar to their previous designs from prior cases.

2. The second option is the robotic abutment. That option has multiple features and abilities.

Proper gingiva adaptation is critical and establishing correct contours can mean a difference between a successful case or not. The software has two quick tools that are very helpful during this process.

1. The snap to gingiva option occupies the space and intimately follows the contours of the scanned gingiva.
2. The snap to anatomy option automatically conforms to the pre-anatomy design in the previous module.

Depending on the material selection, the margin crest of the abutment should be either 1 mm subgingival or supragingival. If using a titanium custom abutment, then the margin crest should be designed 1 mm below the gingival line, in order to hide the non-esthetic effects of the metal. However, if tooth colored materials, such as zirconia, are used, then the margin crest can be designed and place 1 mm above the gingival line. This will afford an easier time for the dentist to clean any excess cement, as well as allow easy access to the abutment, should the need arise.

ESTABLISHING
THE PROPER
CONICAL
EMERGENCE OF
THE IMPLANT
AND CORONAL
PORTION IS
OF UTMOST
IMPORTANCE.

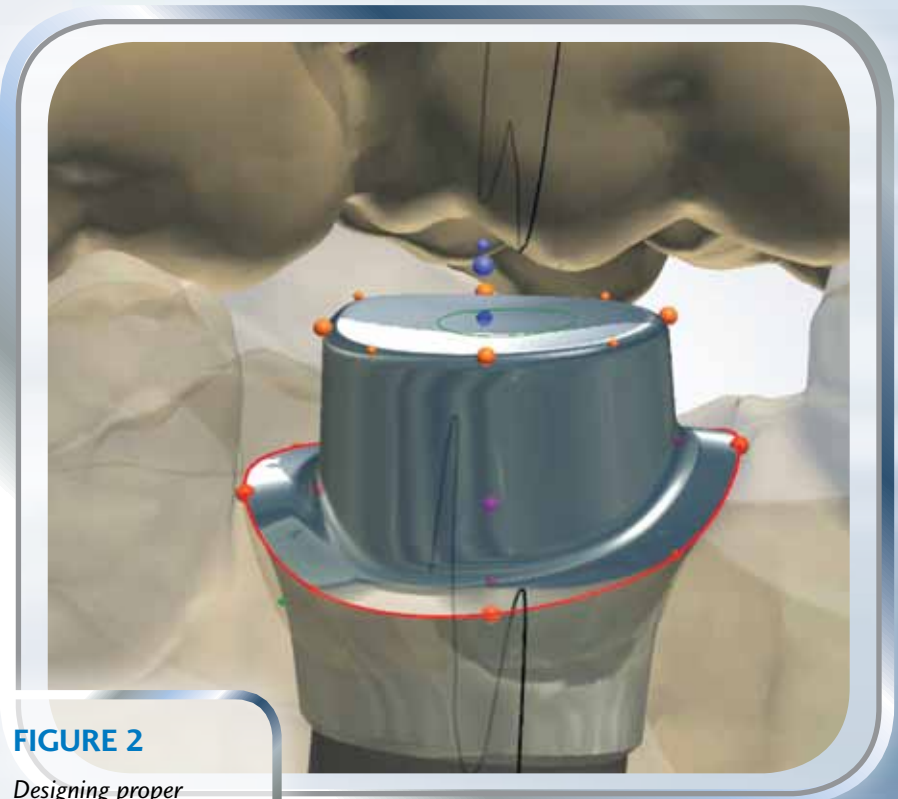


FIGURE 2

Designing proper gingival contours is key.

CAD/CAM IN DENTISTRY HAS AFFORDED US A HIGHER LEVEL OF CONTROL AND DESIGN, AS WELL AS A BETTER MEANS FOR QUALITY OF MATERIALS.

Below the margin crest on the implant conical emergence, lay curvature handles marked in green color (**Figure 2**). Those handles are typically half way between the implant connection and the margin crest, and they are responsible for the curvature of the contours below the margin. It is very important to make those curvatures concave rather than convex, in order to promote healthy and viable blood flow. Hampering blood flow around the implant will cause the gingiva tissue to separate and move away from the implant resulting in the potential failure of the restoration. However, achieving optimal blood flow will allow the gingival to beautifully and naturally wrap tightly around the restoration and provide the appearance of a natural tooth emerging out of the gingiva—an appearance desired by all involved.

As soon as the conical implant emergence is established, we once again turn our attention to the coronal portion of the restoration and return to our anatomical design. The design process is identical to the fixed design module, boasting all

FIGURE 3

Designing the crown using the same standard tools.

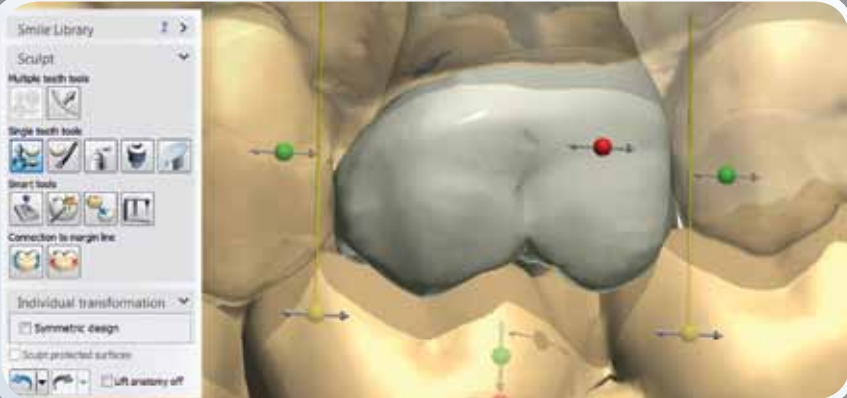
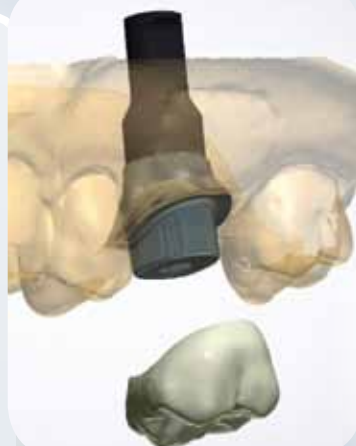


FIGURE 4

Seamless fit among the two designs and can be milled separately.



the robust tools to correctly manipulate the CAD design to look like a natural tooth (**Figure 3**). If designing a split file, then the custom abutment designed prior will exhibit a margin and interface parameter selections, followed by a coronal design (**Figure 4**). This design method will yield two separate .stl files. The custom abutment can be either milled locally and/or sent to a milling center, while you are simultaneously milling the zirconia crown in house. Once the two merge again, they will fit seamlessly, because both files come from the same data set (**Figure 5**). If a full contour screw retained restoration is desired, then the anatomy design will be designed to the conical emergence and appear as though it is emerging in root form. This restoration creates a one piece/hybrid restoration that is screwed directly into the actual implant fixture. Two variations can be designed, depending on the level of esthetics and strength sought after. A solid monolithic full contour zirconia can be milled and post processed by staining and glazing to achieve the anticipated esthetic outcomes, or a screw-retained implant can be cutback in the design virtually, in order to add multiple microlayers of ceramics. These overlaid ceramic layers will provide a higher level of esthetics and depth, but, unfortunately, will reduce the durability of the restoration from the high strength of the solid monolithic zirconia. Many laboratories are creating non-uniform cutbacks to only reduce the zirconia in areas of esthetic consideration that will not compromise strength. Therefore, any occluding and or lingual surfaces are fabricated out of solid zirconia and only labial or buccal surfaces are minimally cut back to achieve elevated esthetics. Pursuing final anatomical design, the digital workflow proceeds to the final stage, where it merges all components and provides the designer with an opportunity to amend the entire restoration as one piece. This is where final design functions and quality control/assurance is accomplished prior to sending it to be milled.

FIGURE 5

The split file is completed and can be manufactured.

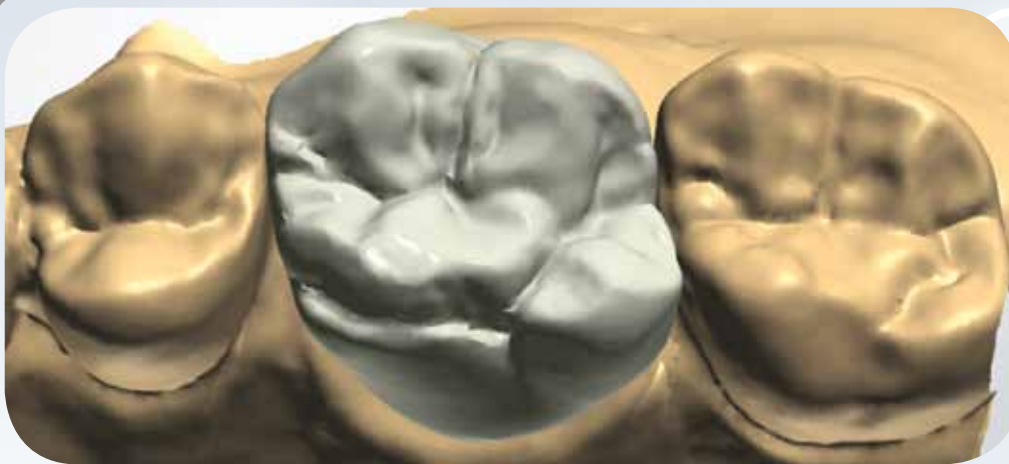


FIGURE 6

A very natural and optimal implant restorative solution.



CAD/CAM in dentistry has afforded us a higher level of control and design, as well as a better means for quality of materials. Traditional methods have been rather limited, both in design and manufacturing, and often times were left to trial and error. Computer aided manufacturing has remedied much of these issues that were introduced with previous techniques. The means by which the metal alloy was attained in traditional methodologies often times introduced either inconsistencies or opportunities for changing the molecular properties of the materials. CAD/CAM not only allows the designer to fully control the design processes, but the design file is then sent to the mill to have the geometric design milled out of unadulterated and pure raw materials. Large manufacturers spent large efforts to bring the most researched and validated materials to the market and through this process, it allows the dental laboratory to manufacture the restoration using the correct and intended material elements to achieve optimal success.

The dental restorative landscape is in a state of metamorphism, changing from traditional and analogous manufacturing methodologies to a more automated and digitally driven industry. The dental restorative solutions laboratories can now deliver their dentists and subsequently their patients, a higher level of dental implant restorations. By providing an elevated restorative process, the dental professional will have an enhanced level of confidence as well as the restorative solutions needed to provide a more positive experience for the patient (**Figure 6**).

These implant restorations are more viable and will remain so for a longer duration of time than

in the past. The end result allows for a better working environment and satisfaction for the dental laboratory. Studies have shown that these attributes and the ability to masticate with full dentition can positively affect the quality and longevity of patients' lives. Being an integral part of the restorative process and dental team provides all involved with a great sense of pride and accomplishment. ①

ACKNOWLEDGMENT:

Special thanks to Zahn Dental for their support and sponsorship.


ABOUT THE AUTHOR

Daniel Alter's experience and repertoire is comprised of more than 20 years in the dental profession. He has ten years of experience owning and operating a successful mid-sized dental laboratory. In addition, he earned a master's degree in business management and organizational leadership, the designation of Master Dental Technologist and two certifications. He is a professor of restorative dentistry at the City University of New York. He is a recognized published author and presenter on various relevant subjects, and is continually active in learning and sharing his knowledge with like-minded professionals.



SOUTHERN STATES SYMPOSIUM & EXPO

Be sure to check out **Daniel Alter, MSc, MDT, CDT**, at the **Southern States Symposium & Expo May 5-7** when he teaches the course: **BruxZir Anterior Esthetic Answer**. The BruxZir anterior is a highly esthetic restorative material that is designed specifically to satisfy the functional and esthetic requirements of the anterior region of the mouth. This exciting new zirconia gives the lab an expanded product offering that combines strength with the lifelike esthetics demanded by the patient. Laboratories have the ability to either mill in-house or partner with outsourcing centers to add a new option to their product mix.



By Kate Zabriskie

Bridging the Generation Gap with NEW HIRES

Three Steps for Getting the Most from Millennials

“Did you see what she wore to work today? What was she thinking? This is a business, not a club!”

“How does he not know to bring a notebook and a pen to a meeting? Do I have to tell him everything?”

“What would make her think it was okay to party with the clients until three in the morning?”

“Does this woman have no understanding of boundaries? Did you know his mother called HR to find out when he would be getting a raise? Unbelievable!”

If you have new hires fresh out of school in your workplace, some of that may have a familiar ring.

So what’s happening? Are the new hires prompting those reactions? Are you just unlucky? Probably not.

Rather, the source of the surprises most likely has to do with training (or the lack of training) related to workplace expectations. Before you say “but they should know,” don’t waste your breath. Maybe they should know, but they don’t. New hires are called new hires for a reason. They are freshly minted employees who don’t know much about

the workplace because most of them haven’t been in it that long.

Think about it, if the shoe were on the other foot and you found yourself in some kind of Freaky-Friday hell, do you think you would flawlessly understand today’s high school or college social codes? Dream on, and good luck with that.

As someone with more experience than the people you hire, you have a responsibility to get them off to a good start. By consistently following three steps, you can short circuit many of the problems people encounter when they start working with new hires.

STEP ONE: Understand Something About Them

Millennials as a generation are different from those who have come before them. More than a few still live at home and don’t plan on leaving soon. Besides, if they borrowed money for school, they may already owe as much as what amounts to a mortgage. That doesn’t mean they’re clueless about life outside of the nest, but their circumstances are probably very different from yours at the same age. Assume nothing.

Next, you must understand these people grew up surrounded by ever-present technology and in an era of instant answers. Sure, you may have had an

Atari or Nintendo, but it's not the same thing. They had and still have Google. They are used to being able to find information and find it quickly. Raised in an era of parents as friends and instant answers, many of these individuals have no problem questioning authority. In the workplace, you may see a new hire ask questions and interact with senior leaders in ways you don't expect. Maybe you already have.

Another difference between Millennials and other generations is how they view praise. As children, this generation of people played on sports teams where everyone received a trophy just for showing up. They were also rewarded and recognized with ribbons and certificates at school for being polite, having integrity, and displaying common courtesy. Millennials expect feedback larded with praise whether merited or not.

Longevity in an organization is another difference between this generation and others. Years ago, it was a major taboo to job jump or have gaps on a resume. These days, you will find that this generation will gladly take six months off to go hiking along the Appalachian Trail or volunteering somewhere overseas. Strangers to delayed gratification, they aren't saving those activities for retirement, and they don't expect to spend a lifetime with a company. Instead of pretending that Millennials will be part of your team for a decade or more, look for ways to make the most of the time you have together while they are with you.

STEP TWO: Spell Out Everything

Millennials are not the Amazing Kreskin. Do not rely on their clairvoyant powers. Most of them don't have any, nor for that matter do they know who he is.

Again, assume nothing. Take workplace dress, for example. There was a time not too long ago when women wore hose to work and wouldn't consider crossing the office threshold in open-toed shoes. That

was then. These days, if you offer no guidance, some will cross the threshold in footwear you wouldn't wear outside your house. And when the parade of fashion crimes starts, you will have no one to blame but yourself. You need to tell people that contrary to what they may see online or in a magazine, the flip-flop is not the new Ferragamo.

Once you've thought about the basics, you'll need to anticipate the times "on the job" when the new hire will interact with people outside your organization. Is the new hire attending a client function with you? If so, it makes sense to review your expectations before you head out the door. Whereas most people might do fine on their own, that's not the point. If you expect a certain set of behaviors, you need to make clear what they are.

STEP THREE: Use Praise And Do It Often

Most people like praise. As mentioned earlier, the difference between Millennials and other generations is they are used to getting it.


To get the most out of your new hires, you must learn how to give feedback more often. A word of caution: Millennials know when they are being patronized just as well as the next person, so choose your words wisely. At this point, a lot of them will have figured out that the trophy thing wasn't such a hot idea. Instead, you are going to have

to pay attention and recognize good work. It's more time consuming, but if you put in the effort, you will probably see more of what you want to see.

Do not rely solely on feedback on the fly. The reality is it's easy to get busy. Make the time to have structured conversations with your new hires about their development. Thinking about skipping this step? Don't. Regularly scheduled one-on-one meetings will ultimately benefit the new hire, the organization, and you.

Final Thought

Developing any employee takes time, and working with new hires has its own set of challenges. There are few shortcuts along the road to success in the workplace.

How much effort you put in to another person is certainly up to you. But think back to your first days in the world of work. If someone spent the time to work with you early in your career, you were lucky. If you didn't have that opportunity, don't you wish you had? 

About the Author

Kate Zabriskie is the president of Business Training Works, Inc., a Maryland-based talent development firm. She and her team help businesses establish customer service strategies and train their people to live up to what's promised. For more information, visit www.businesstrainingworks.com.



Make the time to have structured conversations with your new hires about their development.

Soft Tissue Sculpting

With A PreFormance[®] Post For Fabrication Of A Patient Specific Restoration[®] With Encode[®] Complete

The popularity of CAD/CAM technology in dentistry has grown rapidly. Since the technology was first introduced to dentistry in the late 80's, there have been numerous innovations and advancements. For example, BIOMET 3i introduced a CAD/CAM innovation for fabrication of Patient Specific Restorations[®]. This technology involves scanning and recognizing three dimensional codes that have been embedded onto the occlusal surfaces of Encode[®] Healing Abutments. The codes identify key information regarding the implant and transmit the information about the hex orientation, implant depth and platform diameter to a computer, whereby the abutment is designed virtually. The digital design is then transferred to a milling machine, which then fabricates the abutment from a solid blank of titanium alloy (not waxed, invested, burned out, cast and finished). For these reasons, CAD/CAM restorations are able to be fabricated with higher levels of precision than conventional castings. Encode Abutments are biocompatible, have no porosity and provide a precise, machined implant/abutment interface.



Clinicians are often faced with the need to fabricate custom provisional restorations to meet patient demands, especially for implant treatment in the esthetic zone. It is often necessary to make provisional restorations for the esthetic zone in order to develop natural emergence profiles and sculpt the soft tissues during healing. Once the soft tissue profile is established with the provisional restorations, the technology now allows for the fabrication of definitive CAD/CAM abutments consistent with the emergence profiles established with the provisional restorations. The protocol requires the placement of an appropriate sized Encode Healing

Abutment followed by a simple closed tray impression. This impression transfers the implant information as well as the soft tissue profile created by the provisional restoration to the master cast.

Previously, an implant level impression was necessary to place an implant laboratory analog into a master cast. The Encode Complete Restorative System has now been introduced, which eliminates the need for an implant level impression. After scanning and designing the definitive Encode Abutment, a robotic arm removes the stone of the cast in the area of the implant. This same robotic arm then places the laboratory analog into the master cast consistent with the 3-D orientation of the implant intraorally. This process, called Robocast Technology, places the analog in the master cast and allows the definitive Encode Abutment to be placed on the master cast for fabrication of the definitive restoration.

This clinical case presentation to follow demonstrates the placement of a provisional restoration to sculpt the soft tissues during healing, followed by placement of an Encode Abutment for fabrication of a patient specific restoration. A NanoTite™ Certain® Implant was placed into a single edentulous space in the aesthetic zone in a two- stage protocol. A splinted, natural tooth-supported interim restoration was fabricated to be worn during healing. Then, a provisional restoration was fabricated for the implant using a PreFormance® Post to sculpt the soft tissues and develop the emergence profile such that it would match the crown on the adjacent natural tooth. Following soft tissue maturation and the optimal development of the emergence profile, an Encode Healing Abutment was placed. The healing abutments captured all of the necessary information relative to the implant and allowed for an impression to record the soft tissue contours created by the provisional restoration.

This case presentation is representative of the individual clinician's experience in clinical practice and may not be indicative

of other cases due to varying patient subsets and clinical scenarios.

Initial Patient Presentation

A 48-year-old male patient presented with swelling, redness, tenderness to palpation and percussion around tooth No. 9. Radiographic examination revealed a periapical radiolucency and previous endodontic treatment.

Additionally, the radiograph showed gutta percha extending 3mm beyond the apex of the tooth and a post beneath a ceramic crown (**Figure 1**). Tooth extraction was deemed necessary. The patient requested replacement of the hopeless tooth with a fixed restoration for maximum aesthetics that would not compromise the integrity of the adjacent natural tooth, No. 10. The treatment plan accepted by the patient included a staged approach to treatment:

1. Extraction of tooth No. 9 with immediate grafting.
2. Implant placement.
3. Fabrication of a fixed provisional restoration to sculpt the soft tissue and develop the ideal emergence profile.

CAD/CAM technology was selected for fabrication of the definitive abutment to replicate the soft tissue contours and emergence profile established by the provisional restoration.

Diagnosis

- Non-restorable tooth No. 9 with periapical radiolucency.
- Type I gingivitis with uneven gingival contours.
- Inadequate bone quality and quantity for immediate implant placement.



- Adequate restorative space and interocclusal distance for fabrication of an implant-supported restoration.

Treatment Plan

- Extraction of hopeless tooth No. 9, debridement of the apical lesion and socket preservation for future implant placement.
- Placement of a fixed, composite resin, bonded pontic tooth for No. 9 and a new provisional crown for tooth No. 8.
- Implant placement with a NanoTite™ Certain® Implant.
- Loading protocol and the need for soft tissue grafting to be determined.
- Placement of a PreFormance® Post for fabrication of a provisional restoration to sculpt the soft tissues and develop the emergence profile.
- Removal of the provisional crown and placement of an Encode® Healing Abutment at eight weeks post provisionalization.
- Impression of the Encode Healing Abutment and opposing arch.

- Articulation of the Encode Healing Abutment cast with opposing arch.
- Fabrication of a Robocast and CAD design of a definitive Encode Abutment.
- Laboratory fabrication of the definitive all-ceramic crowns.
- Placement of a definitive Encode Abutment and all ceramic crown for implant site No. 9 and a ceramic crown for tooth No. 8.

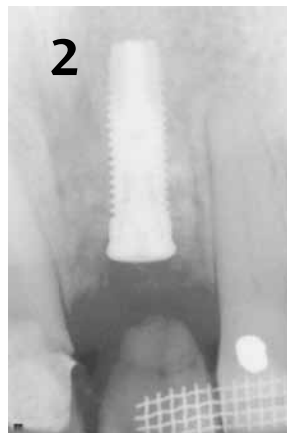
Surgical Treatment

Following acceptance of the treatment plan by the patient, diagnostic casts, wax patterns and a surgical guide were fabricated. On the day of tooth extraction and grafting, the patient received local anesthesia by infiltration. Tooth No. 9 was extracted using an atraumatic technique in an effort to maintain the residual supporting alveolus. The socket walls and apical lesion were carefully debrided of the granulomatous tissue using hand and rotary instruments. The integrity of the socket walls was evaluated, which revealed a large vertical osseous defect with thin apical-facial plates. Therefore, immediate implant placement was not indicated. The socket was grafted with a xenograft bone material and covered with a resorbable collagen membrane for future implant placement. The patient was sent to the restorative dentist for placement of a provisional splinted restoration to be worn during healing and regeneration of the extraction site.

The existing crown on the adjacent tooth No. 8, was removed and the tooth preparation was modified. A splinted provisional restoration was fabricated with a vacuum press using an autopolymerizing acrylic resin (TempARTM, Sultan Chemists). The provisional restoration was splinted to teeth Nos. 8 and 10. Mechanical retention was provided on the palatal aspect of tooth No. 10 with a mesh, which was bonded with a light cured composite resin.

Implant Placement

Given limited patient finances, the patient was seen nine months post extraction and grafting for implant placement. Healing of the grafted site was uneventful under the splinted provisional restoration. The restoration was removed and a full thickness mucoperiosteal flap was elevated to expose the osseous crest. A NanoTite™ Certain® Implant 10 (4mm x 13mm) was placed into the regenerated bone in tooth site No. 9, following the manufacturer's recommended protocol. An implant cover screw was placed into the internal interface of the implant and the soft tissue flaps were closed with resorbable sutures. The splinted provisional restoration was replaced (**Figure 2**).



Provisionalization

Eight weeks post implant placement, the patient returned for second stage surgery and provisionalization. Healing was uneventful (**Figure 3**). The splinted restoration was removed (**Figure 4**) and an incision was made in the soft tissue to expose the cover screw on the implant. A 4.1 mm PreFormance® Post with a 5mm soft tissue flare was placed into the internal interface of the implant, marked, then modified extraorally on a laboratory abutment holder. The modified post was placed into the implant and secured with an abutment screw tightened to 20Ncm of torque. A lateral pedicle graft was placed over the facial aspect of the implant site and sutured. A splinted acrylic resin provisional restoration was fabricated for tooth No. 8 and the implant in tooth site No. 9 by flowing acrylic resin into a vacuum formed template and seating it over the



tooth and abutment preparations. The provisional restoration was contoured, polished and cemented (**Figure 5**). A periapical radiograph was taken to verify cement removal (**Figure 6**). The occlusal contacts were adjusted and the patient was dismissed with oral hygiene instructions.

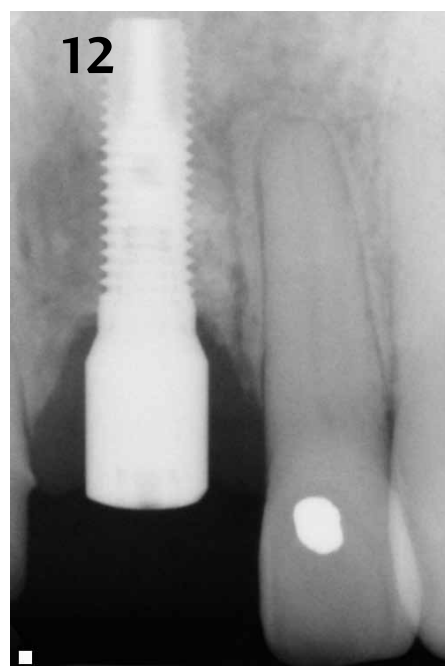
Soft Tissue Sculpting

Eight weeks following provisionalization of the implant, the patient returned for evaluation. The soft tissue graft had healed and matured exposing the PreFormance Post and the margin of the provisional crown on the implant (**Figure 7**). In order to create an emergence profile for the implant-supported restoration that would match the adjacent crown on tooth No. 8, it was necessary to sculpt the soft tissue. The provisional restoration and the PreFormance Post were removed for modifications. The PreFormance Post was placed onto a laboratory abutment holder and scored with a #35 inverted cone bur to create undercuts for mechanical retention. This was followed by the application of composite resin in small increments (**Figure 8 inset**) to create an optimal emergence profile to match tooth No. 8. The modified PreFormance Post was placed into the implant and secured with an abutment screw tightened to 20Ncm of torque. The screw access opening was restored with composite resin (**Figure 8**). The provisional crown was hollowed out and relined over the post with autopolymerizing acrylic resin to match the gingival contours established by the modified PreFormance Post. The provisional crown was cemented and the occlusion was verified (**Figure 9**).

Six weeks later, the patient was seen for evaluation. The soft tissue appeared to be stable around the modified provisional crown in site No. 9. The provisional crown on tooth No. 8 was removed, followed by removal of the provisional crown and PreFormance® Post from the implant in tooth site No.



9 (**Figure 10**). An Encode® Healing Abutment consistent with the implant restorative seating surface was placed in the internal interface of the implant to support the soft tissues. The abutment height was chosen such that the entire occlusal surface of the abutment was at least 1 mm supragingival circumferentially (**Figure 11**). A periapical radiograph was taken to verify full seating of the abutment into the implant (**Figure 12**). Retraction cord was packed into the sulcus of tooth No.8. Light body polyvinylsiloxane impression material (Aquasil Ultra® Impression Material, Dentsply International) was syringed around the Encode Healing Abutment (and tooth preparation) to capture the soft tissue dimensions created by the provisional restoration.





Please note, **Figures 13-16** illustrate the soft tissue shape and emergence profile initially established by the provisional restoration, then transferred to the master cast via the impression of the Encode Healing Abutment.

Heavy body impression material was used to fill the stock tray. The tray was seated and the impression material was allowed to set per the manufacturer's instructions. The tray was removed and the impression was examined for verification that the entire occlusal surface of the Encode

Healing Abutment as well as the soft tissue contours and tooth preparation margins, were recorded. An alginate impression was made of the opposing arch. The impressions, shade selection and occlusal record were sent to the dental laboratory.

In the laboratory, the impression of the Encode Healing Abutment was poured using a die stone for fabrication of a master cast. The casts were mounted on a system-compatible articulator (Stratos™ 100 with Adesso Split Plates, Ivoclar Vivadent, Inc.) using the occlusal record. The Encode

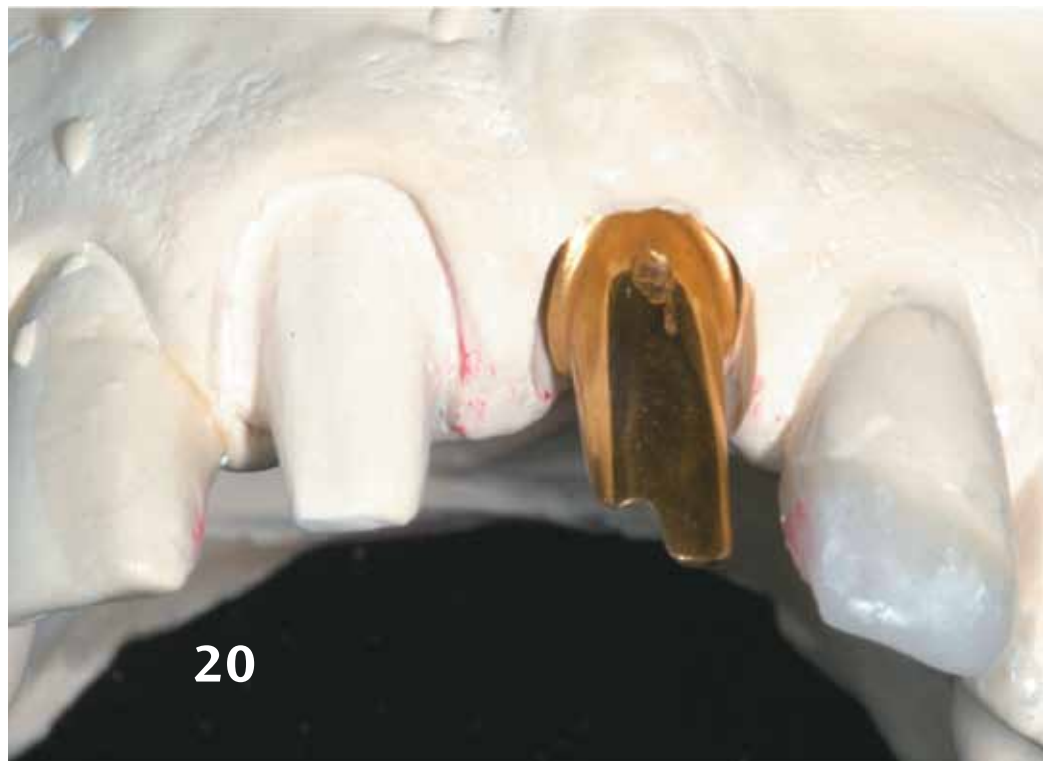
Complete Work Order and the master casts were sent to BIOMET 3i for fabrication of the definitive Encode Abutment. The impression was poured a second time to make a conventional (pinned) master cast for a crown to be fabricated for tooth No. 8 (**Figure 17**).

After scanning the master cast, the abutment was designed virtually. Using the same data, an implant analog was placed into the cast with a computer driven robotic arm (**Figure 18**). A definitive Encode Abutment was then milled from a solid blank of titanium alloy and titanium nitride coated to





19



20

provide a warm hue through the gingival tissues (**Figure 19**).

Lava™ Zirconia Copings and all-ceramic crowns were fabricated for the definitive Encode® Abutment (**Figure 20**) and the natural tooth (**Figure 21**).

At the insertion appointment, the provisional restoration on tooth No. 8 and the provisional restoration and PreFormance® Post were removed from the implant in tooth site No. 9. The titanium nitride coated definitive Encode Healing Abutment was seated into the internal interface of the implant with an audible and tactile click. This ensured complete seating. The abutment was secured with a Gold-Tite® Abutment Screw tightened to 20Ncm of torque with a torque driver (**Figure 22**). A verification radiograph was taken (**Figure 23**). After try-in, the definitive restoration for tooth No. 8 was cemented with Maxcem™ (Kerr Dental) and the implant-supported restoration for tooth No. 9 was cemented with Premier® Implant Cement™ (Premier Dental Products). The excess cement was carefully removed and a verification radiograph was taken. The patient was



21



22



23

dismissed with oral hygiene instructions and scheduled for regular recare visits. At the six month recare appointment, a photograph was taken confirming excellent soft tissue adaptation (**Figure 24**). A periapical radiograph was taken revealing acceptable bone levels around the dental implant (**Figure 25**).

Clinical Overview

This Clinical Case Presentation illustrates a staged approach to implant reconstruction in the aesthetic zone. An implant-supported fixed provisional restoration was placed to sculpt the soft tissues and develop an optimal emergence profile. The goal of the provisional restoration was to shape the soft tissue in an effort to match the emergence profile of the adjacent restoration.

Following soft tissue maturation around the provisional restoration, an Encode Healing Abutment was placed. A simple closed tray impression was made of the healing abutment (and the prepared tooth), which transferred the necessary information for fabrication of a definitive Encode Abutment. All-ceramic restorations were fabricated for the implant and natural tooth following the emergence profiles established during the provisionalization stage of treatment. ①

Acknowledgements:

Surgical Colleague: Kevin Quinn, DDS, Dartmouth, Mass.

Laboratory Colleague: Richard Napolitano, CDT, Precision Craft Dental Laboratory, Inc., Smithfield, R.I.

About the Author:

Dr. Jon A. Ruel received his dental degree from the University of Pennsylvania, School of Dentistry and his Certificate in Prosthetics and Masters of Science from Boston University School of Graduate Dentistry. He is a member of the Academy of Osseointegration and American College of Prosthodontists. He lectures extensively on prosthetics and implant dentistry and maintains a private practice, limited to prosthetic and implant dentistry in New Bedford, Mass.



© BIOMET 3i, LLC.

Used by permission, all rights reserved.



Earn continuing education credits for this article and quiz!

Receive .5 hours CDT/RG Scientific credit and .5 hours of General credit towards your state of Florida dental laboratory renewal by reading this article and passing the quiz. To get your credit, complete the quiz located on the FDLA website at www.fdma.net using the *focus* Magazine link. Once you have completed the quiz, fax it to FDLA at 850-222-3019. This quiz is provided to test the technician's comprehension of the article's content and does not necessarily serve as an endorsement of the content by FDLA.



GUARANTEED **HIGHEST RETURNS** POSSIBLE!

Your key to
**HIGHER
RETURNS**

Refine Direct with Heraeus Kulzer



Don't giveaway your payout to the middlemen!
Why refine with Heraeus Kulzer?

- Higher pay-outs
- Free storage and shipping containers
- Free shipping or pick up
- Full assay report showing total value of your scrap



**NEW REFINING
WEBSITE**

- Order Free Shipping Materials
- Schedule a Pick Up
- Profit Calculator
- Resources

www.mydental360.com/refining

**Get An Extra
For Your Scrap**

+5%

Include this certificate with your next order and receive an additional 5% to the final value of your scrap.

Heraeus Kulzer
Precious Metal Refining
Your Direct Refiner



BE SOCIAL WITH US:  

FDIA Business Partners

These companies support the Florida Dental Laboratory Association in our vision to advance the individual and collective success of Florida's dental technology professionals in a changing environment. They are FDIA's Business Partners, and have pledged their support to Florida's dental laboratory profession.

Accurate Metals & Refining, LLC

Phone: 866-973-3463
Fax: 860-871-2925
www.accuraterefining.com
Refiner of precious metal scrap.



Argen Corporation

Phone: 858-455-7900
Fax: 858-626-8658
www.argen.com
The Argen Corporation provides a wide range of alloys to meet any need, as well as refining services.



Atlanta Dental Supply

Phone: 800-218-5447
Fax: 877-614-0597
www.atlantadental.com/lab
Atlanta Dental Supply Lab Division is an employee-owned company servicing the dental lab market for over 145 years. Specializing in denture teeth by Dentsply TruByte, Heraeus Kulzer, Ivoclar, as well as lab supplies by Modern Materials, Garreco, Whip Mix, S S White, Keystone, GC, Dedeco and Shofu. Atlanta Dental also offers lab scanning solutions.



BEGO USA Inc.

Phone: 800-342-2346
Fax: 401-334-9265
www.begousa.com



CardConnect

Phone: 940-627-8844
Fax: 913-953-5353
www.marathonsi.com
Credit card processing specialist for dental laboratory industry that provides preferred wholesale rates with complimentary gateway.



DENTSPLY Prosthetics

Phone: 352-293-1471
Fax: 813-436-5196
www.dentsply.com
Denture Teeth, Denture Materials, CAD/CAM, Porcelain, Lab Equipment



Handler Red Wing Int'l

Phone: 908-233-7796
Fax: 908-233-7340
www.handlermfg.com
American made lab equipment and furniture manufacturer since 1920. Handler builds Red Wing lathes and model trimmers, Dyna Vac dust collectors, hand pieces, vibrators, flasks, presses, denture curing systems, lab bench and case work.



Heraeus Kulzer

Phone: 574-299-5502
Fax: 574-291-2907
www.heraeus-scrap.com
Scrap refining.



Ivoclar Vivadent, Inc.

Phone: 800-533-6825
Fax: 770-935-4794
www.ivoclarvivadent.com
Leading international manufacturer of high quality dental materials for preventative, restorative and prosthetic dentistry.



Want information on supporting Florida's dental laboratories by becoming an FDIA Business Partner?
Call the FDIA office at (850) 224-0711 or e-mail membership@fdla.net.

Lab Supplies and Teeth GREAT Prices!



The Atlanta Dental Lab Division
is growing to meet your needs!

You will now see our Lab Division called...



- Guaranteed Low Prices
- Same-Day Shipping
- Next-Day Arrival Anywhere in the USA
- Professional Lab Customer Service Agents
- We carry all major brands: Trubyte, Heraeus, Whip Mix, Keystone, Garreco, Snow Rock, Renfert, NSK, and many more!

Call 800.218.5447



Ask for Maggie, Indira, Edina or JoAnn

800.218.5447 • www.atlantadental.com
1650 Satellite Blvd • Duluth, GA 30097

Ivoclar Workshop a Success

The Ivoclar Esthetics Center of Excellence hosted a hands-on workshop on Jan. 22 in Sarasota and was a huge success. We want to thank Ivoclar Vivadent, Inc. for sponsoring the Tackle the Set UP Challenge workshop, presented by Donald Yancey, CDT, and Richard Rought, CDT.



Above: Tackle the Set UP Challenge workshop participants (left to right starting with the front row): Paul Andrews, CDT; Philip Lima; Fernando Valencia; Don Yancey, CDT; Richard Wodzinski, CDT; Jon Eric Johnson, CDT; Jim Monahan; David Flower; Jeff Kocher, CDT; Brad Stevenson; Don Kaiser, CDT; Christian Hernandez; Lyle Alexander; and Rick Rought, CDT.

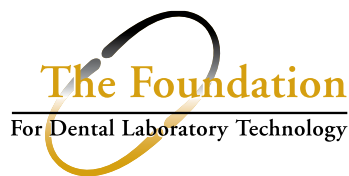


New Foundation Learning Library

The Foundation for Dental Laboratory Technology recently launched a brand new online education learning management platform – the Foundation Learning Library. The Foundation Learning Library offers a variety of quality education through online learning. Previous existing courses such as the Virtual Full Denture Training Program will continue to be offered, in addition to eight new courses that were generously donated by CMR Dental Lab. Videos are available on-demand and include, but are not limited to:

- e.max HT Ceramic Technique
- e.max Diagnostic Waxing Technique
- Lithium Disilicate Over Zirconia Bridge
- e.max Clinical Preparation and Provisionalization
- Posterior Waxing Technique

Plus, there is a special rate for NADL members. All courses are approved for Continuing Education credit through the National Board for Certification in Dental Laboratory Technology (NBC) and are available for 90 days after purchase. For a full list of available courses, please visit www.dentallabfoundation.org/resources/courses.



Race for the Future 3.0

The Foundation for Dental Laboratory Technology will be racing for the future for the third year in a row – this year, in the beauty and natural terrain of Longboat Key on Oct. 16. Support the Foundation and make an investment today that will positively impact the future of your profession, forever.



There are several ways you can get involved:

1. **Become a Sponsor** – Boost positive exposure of your company or individual name that will last all year long.
2. **Register as a Racer** – Notify the Foundation that you wish to participate, and then start training and fundraising.
3. **Donate** – support a participating athlete or give a general race contribution.

Visit www.dentallabfoundation.org/resources/race-for-future for more information.

**exclusively
available from**
Zahn Dental

novux

FLEXIBLE DIGITAL SOLUTIONS



Discover your full Novux® solution

© 2016 Henry Schein, Inc. No copying without permission. Not responsible for typographical errors.

[®]
e.max
IPS

Make it **e.max[®]**
because it matters.

When dental technician Dane Barlow wanted a new smile, he put his money where his mouth is and chose IPS e.max as the restorative solution with proven esthetics and reliability.

Today, more dental professionals choose IPS e.max, the world's leading all-ceramic. With over 100 million e.max restorations placed, it has become the unchallenged leader around the world for dentists who prefer to treat their patients with the very best.

Make it e.max, because every patient matters.

Share your story at
makeitemax.com/smile ***For a chance***



ivoclarvivadent.com

*Ivoclar Vivadent global usage data Photo Courtesy of Bryan Miller
For more information, call us at 1-800-533-6825 in the U.S., 1-800-263-8182 in Canada.
© 2016 Ivoclar Vivadent, Inc. Ivoclar Vivadent, IPS e.max is a registered trademark of Ivoclar Vivadent, Inc.



to be featured in an IPS e.max advertisement!


ivoclar[®]
vivadent[®]
passion vision innovation



2015-2016 FDLA Board of Directors

PRESIDENT

Gail Perricone
GPS Dental Lab Inc.
Orlando
gperricone@gpsdental.com

PRESIDENT ELECT

Fernando de Leon
Precision Esthetics
Apopka
deleons90@aol.com

TREASURER

Douglas Jackson, CDT
Touchstone Dental Laboratory,
LLC
Altamonte Springs
touchstonelab@cfl.rr.com

SECRETARY

Lenny Herrera, CDT
The Surveyor Dental Arts
West Park
survdentsupp@aol.com

DIRECTORS AT LARGE

Al Fillastre, III, CDT
Ceram-O-Arts, Inc.
Lakeland
ceramoarts@gmail.com

Tryron Lloyd
Knight Dental Group, CDL,
DAMAS
Oldsmar
tlloyd@knightdentalgroup.com

Jeremiah Naas, CDT
Inverness Dental Arts
Inverness
iarts@tampabay.rr.com

Dory Sartoris
DCS Dental Lab, Inc.
Jacksonville
dory@dcslab.com

Tim Stevenson, CDT
Stevenson Dental Technology,
CDL
Beverly Hills
tim@sdt-labs.com

James Wells, CDT
Inman Orthodontic Laboratories,
Inc., CDL
Coral Springs
james@inmanortho.com

PAST PRESIDENT

Kristen Brown
Knight Dental Group, CDL,
DAMAS
Oldsmar
kbrown@knightdentalgroup.com

SUPPLIER REPRESENTATIVE

Nancy Franceschi, CDT
GC America, Inc.
Alsip, IL
nancy_franceschi@gcamerica.com

EXECUTIVE DIRECTOR

Jillian Heddaeus, CMP, IOM
Tallahassee
jillian@fdla.net

April 2

FDLA Workshop - Miami

Presented by Alexander Wünsche
Sponsored by Amann Girrbach
Zahntechnik, Inc.
www.fdma.net | 850.224.0711

June 24

FDLA Workshop - Sarasota

Presented by Patrick Coon, CDT, TE
Sponsored by Ivoclar Vivadent
Implant Esthetics Center of Excellence,
Sarasota
www.fdma.net | 850.224.0711



Southern States SYMPOSIUM & EXPO *presented by FDLA*

May 5-7, 2016

Renaissance Orlando at SeaWorld • Orlando, FL

BUILDING a **FOUNDATION** for
EXCELLENCE

Classifieds

DDS Lab is hiring technicians in all specialties.

Come join one of the fastest growing dental labs in the country! We use the latest technology and work with small and large dental groups across the US. Earn salary plus paid vacation and holidays. Call Christy at (813) 249-8878 or email humanresources@ddslab.com

Classified Line Advertising (print and online opportunities)

Classified Line Ads are \$125 (members) and \$175 (non-members) for the first 50 words, and \$.25 for each additional word. Ads will run in one issue of the publication and on FDLA's website for one quarter.

CONTACT: Maureen Turner, Advertising Sales
Phone: (850) 224-0711 advertising@fdla.net

GPS Dental Lab, Orlando, FL

Dental Lab Technicians Needed:

1. Metal Partial frame designing and finishing
2. Ceramist and/or all crown and bridge departments
3. CAD/CAM designing

Experience Necessary, please call 407-447-4250 or send resume to Gail Perricone at gperricone@gpsdental.com or apply online at <http://gpsdental.com/contact-us/employment>

Want to be your own boss?

Unlimited potential with full service dental laboratory in Central Florida. Itero & CEREC technology for highest quality. Plenty of growth potential with possibility of ownership! New grads are welcome! Motivated fixed and removable technician needed. CDT preferred. Email resume to oakland@allaspectsdentallab.com



On the road to quality



Separate yourself from the pack.
What's important to you is important to us.

Customer satisfaction and retention are imperative to your business. Gratify your customers by ensuring that your Quality Assurance and Quality Control activities produce a reduction of both internal and external remakes. Learn how: **Quality Assurance vs. Quality Control**, FDLA's Southern States Symposium, Saturday, May 7th, 3:30—4:30pm.

Learn more: safelinkconsulting.com or call 800.330.6003

Your turn-key solution to quality assurance, safety programs, DAMAS, ISO, and 510(k) submission.

Proud Sponsor of The Foundation for Dental Laboratory Technology Race for the Future 2.0

SAFELINK[®]
Consulting Inc.

NADL Supplier Member of the Year

Meet FDLA's Incoming President Fernando de Leon



Once you conquer the digital technology learning curve and use your dental knowledge, it really does help speed up the work.

After serving on FDLA's board for several years, Fernando de Leon will become the association's president following the Southern States Symposium & Expo in May. He owns Precision Esthetics in Apopa and is a firm supporter of education. When asked about his goals for his tenure as president, de Leon said he wants to continue to work toward FDLA having the best educational opportunities, more educational opportunities and more members to share that knowledge with. However, before he accepts the gavel from FDLA President Gail Perricone, we wanted to find out a little bit more about him, his laboratory and his thoughts about the state of the dental laboratory profession in Florida.

Tell us a little bit about your laboratory and what makes it unique.

My laboratory started in 1988. We are a four-employee laboratory and specialize in crown and bridge. It's a small laboratory, but we are very proud of our restorations and are known for the quality of our esthetic work, implants and full mouth reconstruction cases.

What do you think are the three biggest issues facing the dental laboratory industry in Florida and what can FDLA do to help laboratory owners overcome these challenges?

I think that the biggest challenge is the lack of dental technicians, especially those with an in-depth knowledge of the basics—the biggest being occlusion—to help patients. The second major challenge is the abuse of digital equipment out there. It should be a tool, not the whole laboratory. Also, some laboratories are using technicians who do not have dental knowledge

to run their digital technology and that isn't right. The third challenge is outsourcing work overseas. I think the FDLA is doing a very good job in trying to help laboratory owners with these challenges, but we need to reach out to more technicians as well. If they become technician members, they will see how much the FDLA has to offer them and we will be able to help them by providing educational opportunities and more.

How has being an FDLA member helped your laboratory?

The FDLA has helped me to lower my cost in insurance and merchant processing. It's helped me improve my knowledge by hosting the district clinics and workshops. They have great courses at a very low cost that you can't get anywhere else. That is a big help to the laboratories.

How has the growth in digital laboratory technology changed how your laboratory functions for better and for worse?

I have some digital technology in the lab and it has changed some of our everyday processes and helped to streamline our production. It helps if you have the dental knowledge to use the digital technology correctly so you get the benefits and have fewer remakes. Once you conquer the digital technology learning curve and use your dental knowledge, it really does help speed up the work.

What do you think is the most exciting thing in dental laboratory industry this year?

Of course, the digital dentistry because it's changing so rapidly. I think the software has become very advanced and the equipment is catching up to that. 📌

ATTENDEE REGISTRATION BROCHURE



Southern States SYMPOSIUM & EXPO

presented by **FDLA**

BUILDING *a FOUNDATION* *for*
EXCELLENCE

May 5-7, 2016

**IMPLANTS
ESTHETICS**

**REMOVABLE
PROSTHETICS**

**STRATEGIC
PLANNING**

ARTISTRY

MARKETING

**DIGITAL
DENTISTRY**

**QUALITY
CONTROL**

MODEL ANALYSIS

**MATERIAL
CHOICES**

Renaissance Orlando at SeaWorld • Orlando, FL



Southern States SYMPOSIUM & EXPO

presented by **FDLA**

May 5 - 7, 2016 • Renaissance Orlando at SeaWorld • Orlando, FL

The 2016 Southern States Symposium & Expo will take place May 5 – 7 at the Renaissance Orlando at SeaWorld in Orlando, Florida. **“Building a Foundation for Excellence”** is the theme for the 2016 Symposium. Increasing awareness of the opportunities for enhancing education in the industry through the Foundation for Dental Laboratory Technology and gaining knowledge through the Symposium courses is the goal of the 2016 event. Make plans to attend the meeting and prepare to enhance your education for future excellence!

The Southern States Symposium & Expo, presented by FDLA, is the largest dental laboratory industry meeting in the country run by a nonprofit association. Everything being offered at the Symposium will provide everyone in attendance an exceptional experience.

Bring Your Client Dentists!

The Southern States Symposium & Expo courses are specifically designed for the entire dental team. These courses will help both the dentist and the dental technician work together on the latest trends and techniques.

Don't miss this excellent opportunity to be a part of one of the industry's largest meetings providing continuing education courses and an outstanding showcase of dental laboratory products and services.



BUILDING a **FOUNDATION** for
EXCELLENCE

2016 SCHEDULE OF EVENTS

THURSDAY – MAY 5

12:30 p.m. – 5:30 p.m. **FDLA Matheson Memorial Golf Tournament**
Walt Disney World Golf Club
Lake Buena Vista Course
Sponsored by: Heraeus Kulzer

FRIDAY – MAY 6

7:00 a.m. – 6:00 p.m. **Registration Desk Open**

7:30 a.m. – 8:00 a.m. **Morning Beverage Break**

8:00 a.m. – 8:30 a.m. **Welcome, Board Installation and Awards Presentation**

8:00 a.m. – 11:45 a.m. **OPTIONAL HANDS-ON WORKSHOP:**
Occlusion, Model Analysis and its Relationship to Implant Dentures
Presented by: Marc Wagenseil, D.D., RDT
Sponsored by: VITA North America
(Pre-registration and additional fees required – Capacity 15.)

8:00 a.m. – 11:45 a.m. **OPTIONAL HANDS-ON WORKSHOP:**
Platinum Foil Veneers
Presented by: Von Grow, DTG
Sponsored by: GC America, Inc.
(Pre-registration and additional fees required – Capacity 15.)

8:30 a.m. – 9:30 a.m. **OPENING KEYNOTE ADDRESS:**
Winning Is No Accident
Presented by: Mike Staver
Sponsored by: DENTSPLY Prosthetics

9:30 a.m. – 9:45 a.m. **Mid-Morning Beverage Break**
Sponsored by: CardConnect

9:45 a.m. – 11:45 a.m. **KEYNOTE SESSION – PART I:**
Strategic Planning, Metrics and Marketing for Lab Growth
Presented by: Mark T. Murphy, DDS
Sponsored by: PREAT Corporation

12:00 p.m. – 12:45 p.m. **FDLA Luncheon**
Sponsored by: The Argen Corporation

12:45 p.m. – 3:00 p.m. **HANDS-ON WORKSHOP (continued)**
Occlusion, Model Analysis and its Relationship to Implant Dentures
Presented by: Marc Wagenseil, D.D., RDT
(Pre-registration and additional fees required.)

12:45 p.m. – 5:00 p.m. **HANDS-ON WORKSHOP (continued)**
Platinum Foil Veneers
Presented by: Von Grow, DTG
(Pre-registration and additional fees required.)

1:00 p.m. – 3:00 p.m. **KEYNOTE SESSION – PART II:**
Digital Dentistry – Endless Possibilities
Presented by: Lee Culp, CDT & Lida Swann, DDS
Sponsored by: Ivoclar Vivadent, Inc.

3:00 p.m. – 6:00 p.m. **FDLA Expo Hall Open**

3:00 p.m. – 6:00 p.m. **Expo Hall Kickoff Reception**

6:00 p.m. – 8:30 p.m. **FDLA Friday Night Reception at the Renaissance Orlando at SeaWorld**
Sponsored by: FDLA
Reception Beverages Sponsored in part by: Ivoclar Vivadent

SATURDAY – MAY 7

7:00 a.m. – 3:30 p.m. **Registration Desk Open**

7:30 a.m. – 8:00 a.m. **Morning Beverage Break**
Sponsored by: Cardinal Rotary Instruments

8:00 a.m. – 9:30 a.m. **A COURSES**

8:00 a.m. – 12:00 p.m. **OPTIONAL HANDS-ON WORKSHOP:**
The Art of Color Characterizing Removable Prosthetics using Gradia Gum and OptiGlaze Color
Presented by: Thomas Zaleske, AS, DLT
Sponsored by: GC America, Inc.
(Pre-registration and additional fees required – Capacity 15.)

8:00 a.m. – 12:00 p.m. **OPTIONAL HANDS-ON DEMONSTRATION & LECTURE**
Advanced Design and Customization of 3Shape
Presented by: Mark Ferguson
(Pre-registration and additional fees required – Capacity 15.)

9:30 a.m. – 11:00 a.m. **Expo Hall Break**

9:30 a.m. – 3:30 p.m. **FDLA Expo Hall Open**

11:00 a.m. – 12:00 p.m. **B COURSES**

12:00 p.m. – 1:00 p.m. **Expo Hall Break / Lunch in Expo Hall**

12:00 p.m. – 1:00 p.m. **Gavel Club Luncheon (Invitation Only)**

1:00 p.m. – 2:00 p.m. **C COURSES**

1:00 p.m. – 3:00 p.m. **HANDS-ON WORKSHOP - Zaleske (continued)**
(Pre-registration and additional fees required.)

1:00 p.m. – 5:30 p.m. **NBC Exams (CDT & RG Exams)**
(Candidates must pre-register with NBC)

2:00 p.m. – 3:30 p.m. **Expo Hall Break / Afternoon Beverage Break**

3:30 p.m. – 4:30 p.m. **GENERAL SESSION**
(1 Hour Regulatory Standards Credit / 1 Hour Prevention of Medical Errors Credit)

Opening Keynote Address

Winning Is No Accident

Presented by Mike Staver

CDT/RG: 1 hour of Professional Development Credit • State of Florida: 1 hour of General Credit

Every day, massive accomplishments are realized all over the world. Diseases being cured; teams winning championships; innovative products going to market, and a host of other positive experiences. These things do not happen by accident. They happen as the direct result of certain fundamental principles. The good news is they aren't a secret; they aren't hidden in some far off locale waiting to be unearthed. They are ready and available for you right now. While these life and business-transforming principles are simple, they are not always simple to implement.

Here is an opportunity to learn and apply EXACTLY what you need to do to accomplish outstanding results.

Participants will learn:

- The equation that creates the highest likelihood of success
- The four key principles to pacing yourself effectively
- How to deal with obstacles and opportunities

Mike Staver

Michael Staver is an internationally respected coach and speaker. He has been interviewed for many publications on his signature speaking and writing topic, "Leadership Isn't for Cowards" and how to build high performance firms. His new book with the same title was just released. With a Master's degree in Counseling Psychology and a Bachelor's degree in Business Administration, he has found a way to make complex ideas simple, memorable and immediately applicable. He is a Certified Speaking Professional (CSP), a designation held by fewer than 10% of the members belonging to the International Federation for Professional Speakers. Mike is a bestselling author and award winning speaker. Most recently, he was chosen as one of the 40 hottest business speakers in America by Meetings and Conventions magazine.



Sponsored by:

DENTSPLY

Prosthetics

Friday Keynote Session – Part I

Strategic Planning, Metrics and Marketing for Lab Growth

Presented by Mark T. Murphy, DDS

CDT/RG: 2 hours of Professional Development Credit • State of Florida: 2 hours of General Credit

A measurable systematized approach to marketing, client retention, pricing, and sales will help your lab become less stressful and more profitable. A vision of how and who we want to function with and for as a dental lab sets the stage for this approach. We can't track everything, but we can monitor the right things to stay on course for our financial and behavioral health. By managing the right things, Conversion, Penetration and Retention (CPR), you can create a preferred and profitable future for your dental lab. Dr. Murphy will present a vision driven, customer equity model for CPR, discuss customer retention drivers and metrics, explore client penetration, sales skills and how to measure them and cover how to convert more clients to become customers.

Mark T. Murphy, DDS

Dr. Murphy began his career as a technician, then became an excellent restorative dentist and has remained an important and influential friend of the laboratory profession. He serves on the Boards of Directors at the Pankey Institute, the Foundation for Dental Laboratory Technology, the IdentAlloy Council and is the former President of the National Lab Network. Dr. Murphy currently is the VP of Clinical Education at Microdental-DTI and oversees Sales, Mergers and Acquisitions for them. Dr. Murphy has lectured on Lab Operations, Lab Management, Philosophy, Sales, Marketing, Communication and Competitive Issues facing Labs Today. He is an informative and entertaining speaker, author, panel moderator and frequent presenter at laboratory meetings.



Sponsored by:



Friday Keynote Session – Part II

Digital Dentistry – Endless Possibilities

Presented by Lee Culp, CDT & Lida Swann, DDS

CDT/RG: 2 hours of Scientific Credit • State of Florida: 2 hours of General Credit

Sponsored by:



Throughout the years, restorative trends and techniques have come and gone. Some material developments have transformed the face of aesthetic dentistry, while other initial concepts have phased out and died. Yet, the concept of digital dentistry is one that started out small, and has progressively increased in momentum until its boundaries appear to have become endless. As dentistry evolves into the digital world, the successful incorporation of computerization and new technology will continue to provide more efficient methods of communication and fabrication, while at the same time retaining the individual creativity and artistry of the skilled dental technician. The utilization of new technology will enhance the close cooperation and working relationship of the dentist/technician team. The evolution from hand waxing to digital design, using the diagnostic wax-up and provisional restorations, and their digital replicas to guide us in the creation of cad-cam restorations will be presented.

The most exciting factor surrounding these technologies is not, however, only in the potential applications of these technologies that are being hypothesized by dental professionals. The excitement truly lies in the fact that these “hypothetical” applications are currently being developed today, and some are even in the final stages of development. These advancements are not, therefore, something that will “eventually” emerge in the market. They are realities that are currently being released to further revolutionize the quality of dental care that is being delivered in modern restorative dentistry. This exciting presentation will offer participants a unique insight into the replication of natural esthetics, while focusing on proper function and occlusal harmony using CAD-CAM technology.

Participants will learn a format for achieving that often-elusive goal of pleasing the patient, dentist, and ceramist with creative ceramic artistry and predictable restorative dentistry. Adapting conventional techniques to CAD-CAM technology, Dentist/technician communication, Intra-oral scanning, Digital Implant, planning, surgical guides, final restorations, Restorative material choices, Esthetics and function, Diagnostic treatment planning, Digital Diagnostic Wax, up, Digital Temporary restorations, Milling vs Printing and Cultural vs Technological changes will also be discussed.

Lee Culp, CDT

Lee Culp, CDT is the CEO of Sculpture Studios, a dental laboratory, education and, research and product development center, for new and innovative digital dental technologies, and their applied applications to diagnostic, restorative and surgical dentistry. He is the 2007 recipient of the Kenneth Rudd Award from the American Society of Prosthodontics, the 2007 recipient of the AACD Presidents Award for Excellence in Dental Education, as well as the 2003 recipient of the National Association of Dental Laboratories, Excellence in Education Award, and the 2013 American College of Prosthodontics-Dental Technician Leadership Award, as well as the 2014 Spectrum Publishing-Lifetime Achievement award. Lee is also been appointed adjunct professor the University of North Carolina- School of Dentistry, Graduate Prosthetics Department. He is a leading resource/inventor for many of the materials, products, and techniques used in dentistry today, and holds numerous patents for his ideas and products. Lee writes many articles per year, and his writing, photography, and teaching style have brought him international recognition, as one of today's most exciting lecturers and innovative artisans in the specialty of digital dentistry, dental ceramics and functional esthetics.



Lida Swann, DDS

Dr. Lida Swann received her DDS in 2002 from Colegio Universitario Colombiano and her Master in Prosthodontics from the University of North Carolina in 2014. She was then awarded the UNC Dental - Implant Surgical Fellowship, and then offered a full time faculty position in the Graduate Prosthodontics program. Her educational focus is on implant research and applications of digital technology on implant placement and restorative procedures, and on proper tooth preparation and tissue management for Cad-Cam restorations, as well as, materials science with regard to cementation and restorative materials options. Dr. Swann lectures nationally and internationally on Cad-Cam technology and other topics related to restorative dentistry. She has presented lectures for several dental associations, like the American Prosthodontic Society and The American College of Prosthodontics.



2016 COURSES & EXPO SCHEDULE – SATURDAY, MAY 7

	CERAMICS / CROWN & BRIDGE	REMOVABLES	IMPLANTS	DIGITAL WORKFLOW/ LABORATORY MANAGEMENT	6 HR – OPTIONAL WORKSHOP	4 HR – OPTIONAL WORKSHOP
8:00 A.M. – 9:30 A.M. A COURSES	COURSE A1 BruxZir Anterior Aesthetic Answer Daniel Alter, MSc, MDT, CDT <i>Sponsored by Zahn Dental</i>	COURSE A2 State of the Art RPD Materials and Techniques for Digital and Non Digital Manufacturing Martin Schmid, CDT <i>Sponsored by BEGO USA</i>	COURSE A3 Occlusion, Model Analysis and its Relationship to Implant Dentures Marc Wagenseil, D.D., RDT <i>Sponsored by VITA North America</i>	COURSE A4 Fixed or Removables...Why Not Both? Arian Deutsch, CDT, DTG <i>Sponsored by GC America, Inc.</i>	The Art of Characterizing Removable Prosthetics using Gradia Gum and OptiGlaze Color Tom Zaleske, AS, DLT <i>Sponsored by GC America, Inc.</i> 8:00 a.m. – 12:00 p.m. <i>Pre-registration required</i> <i>Capacity 15</i>	Advanced Design and Customization of 3Shape Mark Ferguson 8:00 a.m. – 12:00 p.m. <i>Pre-registration required</i> <i>Capacity 15</i>
9:30 A.M. – 11:00 A.M.	EXPO HALL OPEN				<i>Pre-registration required</i> <i>Capacity 15</i>	
11:00 A.M. – 12:00 P.M. B COURSES	COURSE B1 Zirconia Esthetics Without Sacrificing High Strength Patrick Coon, CDT <i>Sponsored by Ivoclar Vivadent, Inc.</i>	COURSE B2 The Evolution of Fixed Restorative Options for the Edentulous Arch: Evolving from Clips to Friction Retained to Fixed Hybrids Conrad Rensburg, CDT <i>Sponsored by DENTSPLY Implants</i>	COURSE B3 Restorative Implants Options Chris Bormes, MICOI <i>Sponsored by PREAT Corporation</i>	COURSE B4 Optimizing Fit and Improving Your Digital Results Al Fillastre, III, CDT <i>Sponsored by Whip Mix Corporation</i>		
12:00 P.M. – 1:00 P.M.	EXPO HALL OPEN (12:00 P.M. – 1:00 P.M. – Lunch in Expo Hall)					
1:00 P.M. – 2:00 P.M. C COURSES	COURSE C1 Zirlux 16+: The Superior Translucent Solution Denise North, CDT <i>Sponsored by Zahn Dental</i>	COURSE C2 Digital Dentures with Options Donald J. Yancey, CDT <i>Sponsored by Ivoclar Vivadent, Inc.</i>	COURSE C3 Complex Implant Reconstructions solved by using In- House Cad-Cam Equipment Alexander Wünsche <i>Sponsored by Amann Girrbach</i>	COURSE C4 Accepting Intraoral Scans Donnie Bridges, CDT <i>Sponsored by The Argen Corporation</i>	The Art of Characterizing Removable Prosthetics using Gradia Gum and OptiGlaze Color <i>continued</i> Tom Zaleske, AS, DLT <i>Sponsored by GC America, Inc.</i> (1:00 p.m. – 3:00 p.m.)	
2:00 P.M. – 3:30 P.M.	EXPO HALL OPEN					
3:30 P.M. – 4:30 P.M.	Quality Assurance vs. Quality Control Gary Morgan, CDT <i>Sponsored by Safelink Consulting</i> 1 Hour Regulatory Standards / 1 hour Prevention of Medical Errors Credit					



FDLA is a State of Florida
Approved CE Provider



CDT/REG Credits

All Southern States Symposium & Expo
courses have been approved by the National
Board for Certification for CDT/REG Credits.



AGD Credits

Approved PACE Program Provider FAGD/MAGD Credit
Approval does not imply acceptance by a state or provincial
board of dentistry or AGD endorsement.

CERAMICS / CROWN & BRIDGE

COURSE # A1 – 8:00 A.M. – 9:30 A.M.

CDT/RG: 1.5 hours of Scientific Credit

State of Florida: 1.5 hours of General Credit

BruxZir Anterior Aesthetic Answer*by Daniel Alter, MSc, MDT, CDT*

The BruxZir Anterior is a highly aesthetic restorative material that is designed specifically to satisfy the functional and aesthetic requirements of the anterior region of the mouth. This exciting new zirconia gives the lab an expanded product offering that combines strength with the lifelike aesthetics demanded by the patient. Laboratories have the ability to either mill in-house or partner with Outsourcing Centers, to add a new option to their product mix.

COURSE # B1 – 11:00 A.M. – 12:00 P.M.

CDT/RG: 1 hour of Scientific Credit

State of Florida: 1 hour of General Credit

Zirconia Esthetics Without Sacrificing High Strength*by Patrick Coon, CDT*

Zirconia, dental's wonder material. Almost every dentist is asking for it, but they don't always know where and when it should be used. With all of the new zirconias on the market, we as technicians don't always know how to advise them. So, how do we achieve the high strength the dentist desires without sacrificing the esthetics the patient demands? The answer: Zenostar Universal Zirconia System, the star among zirconia oxides. With different translucency levels and strengths, it is truly the answer to this dilemma. In this lecture, we will discuss where to use each to satisfy the patient, the doctor and the lab's bottom line. Topics covered will include: overview of Wieland mills and software, design considerations for zirconia restorations, the different Zirconias offered by Ivoclar Vivadent, Inc. and Wieland Dental and how to achieve optimum esthetics with each zirconia offering.

COURSE # C1 – 1:00 P.M. – 2:00 P.M.

CDT/RG: 1 hour of Scientific Credit

State of Florida: 1 hour of General Credit

Zirlux 16+: The Superior Translucent Solution*by Denise North, CDT*

Zahn Dental is proud to introduce its newest product offer to the Zirlux® line. Learn the easy production methods needed to start using the new Zirlux® 16+ Zirconia. This lecture/ demonstration will show how to use the pre-blended shaded disc, which is offered in all 16 Vita Shades. Technicians can create monolithic restorations with beautiful translucency and the high strength demanded by patients and dentists in final restorations. Just mill, sinter and glaze, the Zirlux® 16+ is the ideal zirconia for all restorative indications. Give your laboratory the confidence you desire by providing the strength professionals demand.

REMOVABLES

COURSE # A2 – 8:00 A.M. – 9:30 A.M.

CDT/RG: 1.5 hours of Scientific Credit

State of Florida: 1.5 hours of General Credit

State of the Art RPD Materials and Techniques for Digital and Non Digital Manufacturing*by Martin Schmid, CDT*

RPD's are growing and projected to grow long into the future. Participants will see state of the art hand and digital designing options, wax and printed patterns, and fast cast techniques for casting frames in less than an hour from investing.

COURSE # B2 – 11:00 A.M. – 12:00 P.M.

CDT/RG: 1 hour of Scientific Credit

State of Florida: 1 hour of General Credit

The Evolution of Fixed Restorative Options for the Edentulous Arch: Evolving from Clips to Friction Retained to Fixed Hybrids*by Conrad Rensburg, CDT*

Mr. Rensburg will discuss today's implant supported and implant retained restorative options available for restoring the edentulous arch. This lecture will focus on fixed hybrid choices, removable clip denture options and the protocols involved with restoring a case using a state-of-the-art patient-specific overdenture solution that uses rigid telescopic principles to create a pure implant-borne, palate free, removable result.

By discussing the advancement of technology, the restorative team can now effectively determine the best avenue for restoring individual patients based on functional as well as economical requirements. Today's technology allows our restorative team a multitude of options. By showing case studies, this lecture will give the restorative team the technical knowledge they need to best treat the edentulous patient. The lecture will also focus on utilizing these technologies as marketing tools through which you can grow and position your dental lab in an ever evolving market.

Participants will be able to understand:

- The protocols, procedures and restorative options available when restoring the edentulous arch.
- Communicate marketing principles and techniques utilizing today's restorative technologies.
- Material options, applications and economic considerations and the advantages associated with each protocol.

continued

COURSE DESCRIPTIONS – SATURDAY – MAY 7

REMOVABLES, CONTINUED

COURSE # C2 – 1:00 P.M. – 2:00 P.M.

CDT/RG: 1 hour of Scientific Credit
State of Florida: 1 hour of General Credit

Digital Dentures with Options

by Donald J. Yancey, CDT

Has your lab experienced multiple companies jumping on the Digital Denture bandwagon? If so, this lecture is for you! Mr. Yancey will cover the Digital Denture innovative workflow, patient records made fast, accurate and easy, digital model analysis, digital tooth set up with the Smile Composer, Digital waxing and Digital processing in this informative session.

IMPLANTS

COURSE # A3 – 8:00 A.M. – 9:30 A.M.

CDT/RG: 1.5 hours of Scientific Credit
State of Florida: 1.5 hours of General Credit

Occlusion, Model Analysis and its Relationship to Implant Dentures

by Marc Wagenseil, D.D., RDT

Setting up dentures, whether standard or implant retained, can be a challenging task for a Denturist or Dental Technician. Dental patients expect individual and characteristically fitted dentures that suit their esthetic and functional expectations. Most often, a model is the most trusted piece of information to fully assess and replicate a functioning prosthesis. Get ready to be surprised about what information can be communicated from a patient and extracted from an edentulous model that unveils the secrets for functional and esthetic success.

Techniques of model analysis, as outlined by Prof. Gerber and the T.I.F. Method will also be discussed to provide highly predictable yet uncomplicated methods of determining the former positions of natural teeth. Proper model analysis will also help determine statically suitable load areas of the denture to help maximize design and control torque stresses.

COURSE # B3 – 11:00 A.M. – 12:00 P.M.

CDT/RG: 1 hour of Scientific Credit
State of Florida: 1 hour of General Credit

Restorative Implants Options

by Chris Bormes, MICOI

A didactic overview and theory of case design to help the attendee decide when to recommend a Fixed Detachable, Fixed Removable, or Removable Prosthesis with a Bar or Stud attachment. A key theme will be teamwork and communication between the Dental Technician and Dentist. The attendee will learn: why to use a bar or stud attachment, when to use a bar or stud attachment, when to choose a fixed detachable/hybrid or fixed removable, advantages and disadvantages of each type of attachment and different options available for bar, stud, and fixed detachable restorations.

COURSE # C3 – 1:00 P.M. – 2:00 P.M.

CDT/RG: 1 hour of Scientific Credit
State of Florida: 1 hour of General Credit

Complex Implant Reconstructions solved by using In-House Cad-Cam Equipment

By Alexander Wünsche

Due to a fast growing implant business, a lot of dental laboratories are being faced by very complex implant situations that are difficult to restore. Alexander Wünsche will show how these difficult situations can be solved by using in-house cad-cam equipment.

From using laboratory scanners, cad software and milling machinery, he will explain the planning and executing of these restorations. Wünsche will also focus on the material that should be used for implant reconstructions as well as how to handle it properly.



DIGITAL WORKFLOW / LABORATORY MANAGEMENT

COURSE # A4 – 8:00 A.M. – 9:30 A.M.

CDT/RG: 1.5 hours of Scientific Credit

State of Florida: 1.5 hours of General Credit

Fixed or Removable...Why Not Both?

by Arian Deutsch, CDT, DTG

We are no longer living in a time when “fixed” and “removables” are polar opposites. With today’s complex implant challenges, it is imperative that we find a middle ground which combines the best of both camps. Arian Deutsch, CDT, DTG explores an implant solution that is extremely precise in nature, and crosses the divide combining the best elements of both fixed and removable in order to provide clients and patients with a hygienic, aesthetic, long term solution.

COURSE # B4 – 11:00 A.M. – 12:00 P.M.

CDT/RG: 1 hour of Scientific Credit

State of Florida: 1 hour of General Credit

Optimizing Fit and Improving Your Digital Results

by Al Fillastre, III, CDT

Just digitally producing a crown, bridge or abutment doesn’t guarantee a perfect fit. This presentation will cover everything from proper digital die trimming to proper scanning techniques, establishing the ideal scanner settings and the best maintenance and data management practices. Additional topics will include a detailed look at accurate margin identification, scanning tips, deep diving into digital control parameters, knowing when to “tweak” outsource provider settings and understanding Controls & Measurement tools.

COURSE # C4 – 1:00 P.M. – 2:00 P.M.

CDT/RG: 1 hour of Scientific Credit

State of Florida: 1 hour of General Credit

Accepting Intraoral Scans

by Donnie Bridges, CDT

In this course, you will learn how your lab can accept digital impressions from today’s leading intraoral (IOS) scanners and what to do with the file once it has been received. You will learn the workflow options inside a laboratory that is IOS ready, the benefits of incorporating this technology into your business and the potential growth it will bring to your laboratory. Attendees of this course will also leave with a working knowledge of the options in today’s digital dental office and how to communicate those options to their dentists.

REGULATORY STANDARDS / PREVENTION OF MEDICAL ERRORS

3:30 P.M. – 4:30 P.M.

CDT/RG: 1 hour of Regulatory Standards Credit

State of Florida: 1 hour of Prevention of Medical Errors Credit

Quality Assurance Vs. Quality Control

by Gary D. Morgan, CDT

At first glance, these two terms seem to mean the same thing. However, in a dental lab’s Quality System, they have different meanings. This presentation will discuss how implementing both Quality Assurance and Quality Control activities in the lab can result in reduction of both internal and external remakes, improved productivity, and ultimately customer satisfaction.



Occlusion, Model Analysis and its Relationship to Implant Dentures

Presented by Marc Wagenseil, D.D., RDT

CDT/RG: 6 hours of Scientific Credit • State of Florida: 6 hours of General Credit

Friday, May 6

- 8:00 a.m. – 11:45 a.m. Hands-on Workshop
12:00 p.m. – 12:45 p.m. FDLA Luncheon (included in registration fees)
12:45 p.m. – 3:00 p.m. Hands-on Workshop

Setting up dentures, whether standard or implant retained, can be a challenging task for a Denturist or Dental Technician. Dental patients expect individual and characteristically fitted dentures that suit their esthetic and functional expectations. Most often, a model is the most trusted piece of information to fully assess and replicate a functioning prosthesis. Get ready to be surprised about what information can be communicated from a patient and extracted from an edentulous model that unveils the secrets for functional and esthetic success.

Techniques of model analysis, as outlined by Prof. Gerber and the T.I.F. Method, will also be discussed to provide highly predictable yet uncomplicated methods of determining the former positions of natural teeth. Proper model analysis will also help determine statically suitable load areas of the denture to help maximize design and control torque stresses. This intensive lecture and demonstration component reviews occlusion and its relationship to implants, factors which influence occlusion, model analysis, how to manage occlusion, lingualized occlusion and its use for implant supported dentures. This workshop speaks holistically to occlusion and its importance to implant supported dentures.

Beyond valuable communication and process content, each participant will have an opportunity to setup an upper arch against a predetermined lower arch to provide hands-on practical experience that flows with the principles to be of

the theory learned. This informational and interactive workshop will provide removable essentials and principles to increase your ability to provide quality denture care. Take the challenge that surely will provide you with answers beyond your questions.

Learning Objectives:

Develop knowledge to understand, apply and perform a model analysis for upper and lower edentulous models, Setup lingualized denture teeth within the limits established by the model analysis, Review implant considerations including patient education, diagnostic and treatment planning between all involved, Understand occlusion and its relationship to implant supported dentures and Learn the benefits of the VITA Tooth Configurator software for you and your patient.

Each participant will need:

- Waxing instruments, a hand piece and all other personal tools.

Sponsored by:



Platinum Foil Veneers

Presented by Von Grow, DTG

CDT/RG: 8 hours of Scientific Credit • State of Florida: 8 hours of General Credit

Friday, May 6

- 8:00 a.m. – 11:45 a.m. Hands-on Workshop
12:00 p.m. – 12:45 p.m. FDLA Luncheon (included in registration fees)
12:45 p.m. – 5:00 p.m. Hands-on Workshop

This hands-on workshop will utilize the foil veneer technique. You will learn:

- The Art of Swaging (yes, it is an art)
- Foil Philosophy
- The Prep Less Foil Veneer
- Removing the Foil
- Case Selection

Each participant will need:

- 1 model of your upper arch sectioned and trimmed
- 1 pair of small precision scissors
- 1 pair of precision tweezers. (Preferably Swiss made)
- Tools for smoothing foil (rosewood sticks, agate stick, fingernail)
- 1 shop towel
- Hand piece and burs that you are used to using
- 1 porcelain tray, brushes, sponge and water bowl

Sponsored by:



(Note: Pre-registration and additional fees required – Capacity 15. Participants must pre-register by 4/13/16.)

Registration Includes: Friday Only Registration for Hands-on Workshop, Friday Lunch, Friday Night Reception, admission to the Expo on Friday & Saturday.

The Art of Color Characterizing Removable Prosthetics using Gradia Gum and OptiGlaze Color

Sponsored by:



Presented by Thomas Zaleske, AS, DLT

CDT/RC: 6 hours of Scientific Credit • State of Florida: 6 hours of General Credit

Saturday, May 7

8:00 a.m. – 12:00 p.m. **Hands-on Demonstration**
12:00 p.m. – 1:00 p.m. **Lunch & Expo Hall Break** (included in registration fees)
1:00 p.m. – 3:00 p.m. **Hands-on Demonstration**

Course Objectives:

- Provide PowerPoint explanations concerning contour and color relationship to tissue supplemented by demonstration and hands-on instruction using products.
- Hands-on instruction providing external acrylic base colorization and tooth modification using Optiglaze Color and/or Gradia Gum to enhance and personalize each case.
- Hands-on instruction on unique finishing techniques to preserve coloring and provide surface texture and luster.

Participants should bring:

One or several arches that have been cured and roughly finished on which to layer Gradia Gum; composite and/or Optiglaze Color on teeth and base; Smock, or other to aid in protecting street clothing; Lighting and magnification preference.



OPTIONAL HANDS-ON DEMONSTRATION & LECTURE – SATURDAY, MAY 7

Advanced Design and Customization of 3Shape

Presented by Mark Ferguson

CDT/RC: 4 hours of Scientific Credit • State of Florida: 4 hours of General Credit

Saturday, May 7

8:00 a.m. – 12:00 p.m. **Hands-on Demonstration and lecture**

(This is a 4-hour course – which will allow for lunch in the expo hall and courses in the afternoon).

Course Objectives:

During this lecture and hands-on demonstration, Mark Ferguson will discuss 3Shape and the versatility a lab can gain by customizing the software. This will include importing custom anatomy libraries and how they can separate your lab from the competition. From there, the group will explore some advanced design cases. Discussions will include designing cosmetic cases, full arch screw retained zirconia and the complete digital workflow.



HANDS-ON TABLE CLINICS IN EXPO HALL

BACK BY POPULAR DEMAND! FDLA will provide the opportunity to earn CE credits during the expo hall hours again this year. The table clinics will take place within the sponsored island booths in the expo hall. Locations and times for each course will be announced closer to the Symposium. The following sponsors have agreed to participate this year:

Shading White and Pre-shaded Zirconia in Less Than 60 Seconds for Maximum Esthetics and Translucency

Presented by: Marlin Gohn, CDT

Sponsored by: The Argen Corporation

This course will give step by step instructions on how to achieve maximum aesthetics and translucency through transitional shading of Zirconia and Pre-shaded Zirconia. By following this simple shading technique, you will achieve the most beautiful, natural looking anterior and posterior Zirconia units in less than 60 seconds.



Unlock the Bite, Unlock the Problems

Presented by: Marc Wagenseil, D.D., RDT

Sponsored by: VITA North America

Fabrication of functional implant dentures is paramount to be a successful denturist/ technician and provide patient satisfaction. Be introduced to important little things that are required for consistent results in areas of treatment planning, design, occlusal set-up for individual function and processes to help secure your dental future.

Objectives include:

- Occlusion scheme used to provide natural, non-locking function.
- Implant fixed / removable case design to manage patient expectations.
- Minimizing relines with proper fitting dentures; treatment planning success.
- Managing attachments from original processing to issues of retention.
- Methodology and physiologic need for Lingualized occlusion

Each participant will earn 1 hour of Scientific Credit (CDT/RG) and 1 hour of General Credit through the State of Florida per course.

FDLA MATHESON MEMORIAL GOLF TOURNAMENT

Walt Disney World Golf Club Lake Buena Vista Course

2200 Golf Drive, Lake Buena Vista, FL 32830

407.WDW.GOLF

<http://golfwdw.com/lake-buena-vista-golf-course/>

Thursday, May 5 • 12:30 p.m. – 5:30 p.m.

(Additional registration and fees required.)

Sponsored by: **Heraeus Kulzer**
Mitsui Chemicals Group

Disney's Lake Buena Vista Golf Course has hosted the PGA Tour, the LPGA Tour and USGA events. Certified by Audubon International as a Cooperative Wildlife Sanctuary and rated an impressive 4 stars by Golf Digest, the 18-hole course was conceived by Joe Lee and most notably features elevated bunkered greens that put a premium on accurate approach shots. This classic country-club style course winds through pastel villas, pine forests, palmettos and sparkling lakes. Test your skills and fortitude at the demanding 7th hole with its challenging island green.



Tournament Fees Include:

- Greens fees
- Golf cart with GPS Yardage System
- Unlimited practice balls
- Boxed lunch for each golfer
- Prizes awarded for top scoring team, longest drive and closest to the pin

Sponsors

(as of 3/1/16)

KEYNOTE SPEAKERS



Prosthetics



passion vision innovation



FRIDAY LUNCHEON

MATHESON MEMORIAL GOLF TOURNAMENT

TRADE SHOW BAGS

ROOM KEY CARDS



Heraeus Kulzer
Mitsui Chemicals Group



FRIDAY NIGHT RECEPTION BEVERAGES

FRIDAY MID- MORNING BREAK

SATURDAY MORNING BREAK

ATTENDEE LANYARDS



cardconnect.



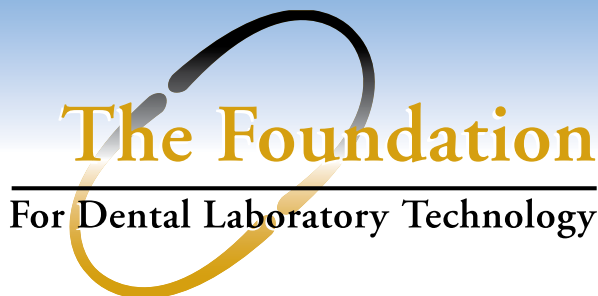
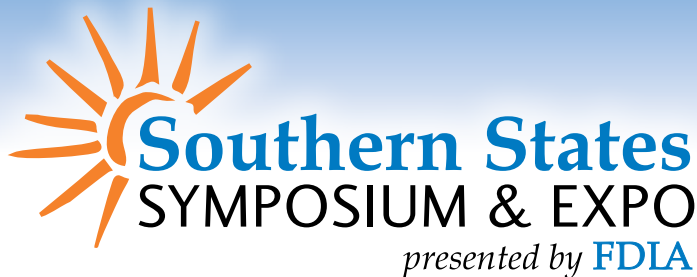
Exhibitors

(as of 3/1/16)

3D BioCAD
Accurate Metals & Refining
Affordable Dentures Dental Laboratories
American Dental Supply, Inc.
Americana Dental, Inc.
Argen Corporation
Aspen Dental
Atlanta Dental Supply
BEGO USA
Benco Dental
Brasseler USA
CAP – Custom Automated Prosthetics
CardConnect
Cardinal Rotary Instruments

DentalEZ
DENTSPLY Prosthetics
GC America, Inc.
Handler Mfg. Co., Inc.
Heraeus Kulzer
Indian River State College
Inside Dental Technology
Ivoclar Vivadent, Inc.
Jensen Dental
Kettenbach
Laboratory Solutions
Lista International
McFatter Technical College
NADL/NBC/FDLT

Nowak Dental Supplies, Inc.
PREAT Corporation
The Ratava Group/Kerox
Renfert USA
Sterngold
Straumann
Sun Dental Labs
VITA North America
Whip Mix Corporation
Xpdent Corp
Zahn Dental
Zirkonzahn USA, Inc.



Join us in Building the Future of Dental Technology

At the 2016 Southern States Symposium & Expo, FDLA will join together with the Foundation for Dental Laboratory Technology to increase awareness of the opportunities for enhancing education in the industry.

The Foundation is a 501(c)(3) educational non-profit created in 2008 to advocate and raise awareness of the necessity of dental laboratory technology education for dental technicians and other effected members of the dental team. The Foundation provides grants and scholarships to interested candidates for advanced education and develops educational programs that are relevant and accessible to both dental technicians working in the laboratory as well as dental laboratory technology students.

My Commitment Pledge

We need your help. Make an investment in the future of your profession by contributing to The Foundation. As a contributor, you will be recognized by having your name listed on our website www.dentallabfoundation.org, but more importantly, you will carry the knowledge that you made an investment that will positively impact the future of your profession.

Donor Information: (Who and how you want your name recognized. This information may be published.)

(Salutation: ☐ Mr. ☐ Ms. ☐ Mrs. ☐ Dr. ☐ Other _____) Name _____

☐ CDT ☐ RG ☐ RDT ☐ DDS ☐ DMD ☐ Other: _____

Company _____ ☐ CDL ☐ DAMAS

Address _____

City/State/Zip _____

Phone _____ Fax _____

Email _____

Payment Method: (Check one option below)

☐ Please find enclosed check payable to the *Foundation for Dental Laboratory Technology* in the amount of \$_____. (For a one-time donation.)

☐ Please contact me regarding a multi-year contribution.

☐ Please charge my credit card (☐ VISA ☐ MasterCard ☐ AMEX) in the amount of \$_____. (For a one-time donation.)

Card# _____ Exp. Date _____ Security Code* _____

*3-digit number on reverse side of most cards, 4-digit number on front for AMEX only

Cardholder Name _____ Phone # _____

Billing Address (if different from above) _____

Signature _____ Date _____

The Foundation for Dental Laboratory Technology is exempt under section 501(c)(3) of the Internal Revenue Code, making your contributions tax-deductible.

The Foundation for Dental Laboratory Technology



Introducing

MEMBERSHIP LEVELS

Get The Best Value
For Your Dollar



With our new membership levels, you can **COVER ALL OF YOUR EMPLOYEES** as members of FDIA under your laboratory's membership.



The level you choose allows that many employees to **ATTEND OUR ANNUAL SYMPOSIUM, DISTRICT WORKSHOPS, AND OTHER MEETINGS** at the greatly reduced FDIA Member rate.

Each level of membership is designed to **SAVE YOU MONEY** and provide membership benefits to as many employees as you choose to cover.



Your laboratory will be eligible for all of the **MEMBERSHIP BENEFITS** listed on the next page. Each employee under your laboratory's membership will also receive *focus* magazine.



Select Your Level

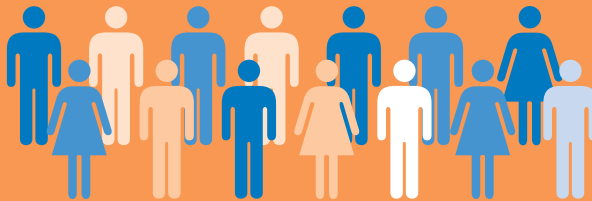
15+
Members



\$750

Unlimited savings*

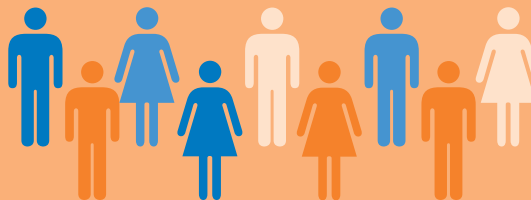
10-14
Members



\$535

up to
\$110 savings*

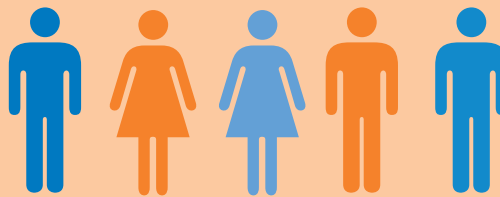
6-9
Members



\$435

up to
\$150 savings*

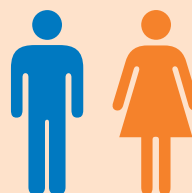
3-5
Members



\$335

up to
\$90 savings*

1-2
Members



\$235

up to
\$40 savings*

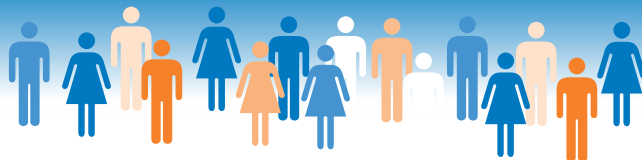
* Estimated savings based on previous discount membership incentive plans.



Member Benefits



Your membership in the Florida Dental Laboratory Association (FDLA) will bring you a return many times greater than your investment. The association's proven programs provide members with the tools they need to operate their businesses successfully.



EDUCATION

As the leader of dental laboratory technology continuing education within the state of Florida, we are committed to helping laboratories formulate a business that will grow, meet the requirements mandated by Florida law and help Certified Dental Technicians (CDT) and Certified Dental Laboratories (CDL) maintain their certification. FDLA members are eligible to receive discounted rates on all continuing education.



District Workshops – Rotating around the state of Florida, FDLA District Workshops offer laboratory owners and technicians/staff the opportunity to receive continuing education credits year round on a variety of topics including the required “Florida Laws and Rules for Dental Laboratories” course.

Online Education – FDLA offers online education, including the mandatory “Florida Laws and Rules for Dental Laboratories” course, on our Website www.fdma.net.

Southern States Symposium & Expo presented by FDLA – As the largest not for profit dental laboratory meeting in the country, attendees have an opportunity to meet with vendors of dental laboratory products/services to discuss equipment, supplies and techniques that can improve their business. A wide range of technical clinics are scheduled to provide members with the most current industry standards and continuing education.

LEGISLATIVE/ GOVERNMENT RELATIONS

FDLA works with several agencies to modify and strengthen existing laws affecting dental laboratories and ensure that such regulations strike a balance between patient safety and ease of compliance. FDLA members are provided critical updates and reminders for important legislation, deadlines and regulatory alerts.

Florida State Laws Affecting Dental Laboratories Manual – FDLA has developed a manual defining the state laws affecting dental laboratories. This manual explains in detail: continuing education, data required on prescriptions, materials disclosure and point of origin requirements necessary with all communication and case work executed between the dentist and laboratory.

Continuing Education Requirement – The state of Florida mandates that each laboratory in Florida must receive 18 hours of Florida approved continuing education credit every two years.

FDLA is an approved provider and offers a variety of courses – including the mandatory course on “Florida Laws and Rules for Dental Laboratories.”



BUSINESS SERVICES

(available to laboratory owners)

FDLA Insurance Services – FDLA is proud to offer special rates for laboratory members for Group & Individual Health & Dental, Disability Income, Employment Practices Liability (EPLI), Office overhead expense, Term Life & Long Term Care, Workers' Compensation, Pension & Retirement Plan, Fidelity Bond and Auto & Home Insurance.

Human Resource Hotline – The average dental laboratory does not have the workforce or means to hire a human resources manager. Even larger laboratories that have a human resources manager may need some advice on tough situations from time to time. FDLA members receive human resources telephone consultation services FREE OF CHARGE!

Credit Card Payment Processing – FDLA member laboratories are eligible to receive discounted rates on credit and debit card processing. Our provider specializes in creating card acceptance programs specifically for the dental industry.



COMMUNICATION

focus Magazine – FDLA's quarterly *focus* Magazine is the most widely read state dental laboratory association publication. It provides updates on crucial industry information, new technology, laboratory management and other issues of vital concern. FDLA members receive a complimentary subscription as part of their membership.

Website – FDLA's Website, www.fdma.net, has comprehensive information on pertinent industry updates as well as conference registration forms, an online directory that enables dentists to look up FDLA member laboratories and other links.





Florida Dental Laboratory Association Membership Application

Any commercial dental laboratory registered by the State of Florida Department of Health is eligible. Membership shall be in the name of the laboratory as registered by the State of Florida. The owner, partner or designated representative shall represent the laboratory in meetings and is eligible for elective office and voting privileges. Dental laboratories located outside of the state of Florida may join as an Affiliate member using this form.

Name: _____ ☐ CDT

Laboratory Name: _____ ☐ CDL ☐ DAMAS

Laboratory Owner Name: _____ ☐ CDT

Address: _____

City: _____ State: _____ Zip: _____

Phone: _____ Toll Free: _____ Fax: _____

E-mail: _____ Website: _____

Florida Department of Health Laboratory License Number: (if applicable) _____

Payment Information

Total Enclosed: \$ _____

☐ Check, payable to FDLA

☐ Visa

☐ MasterCard

☐ AMEX

Card No.: _____ Security Code*: _____ Expires: _____

*This is the three digit number found on the back of your card in the signature area. AMEX - This is the four digit number found on the front of your card.

Name as it appears on card: _____ Signature: _____

Credit Card Billing Address: _____

RETURN APPLICATION TO FDLA at: 325 John Knox Road Ste L 103, Tallahassee, FL 32303 OR Fax with credit card payment to (850) 222-3019.

Check One: ✓

☐ **1-2 Members: \$235**

☐ **3-5 Members: \$335**

☐ **6-9 Members: \$435**

☐ **10-14 Members: \$535**

☐ **15+ Members: \$750**

Your Laboratory Members:

Please list the name and email address of your employees based on the membership level you chose.
(Please note: the primary contact that you listed above will be included in the total count.)

Name: _____ Email: _____

Name: _____ Email: _____

Name: _____ Email: _____

Name: _____ Email: _____

Name: _____ Email: _____

Name: _____ Email: _____

Name: _____ Email: _____

Name: _____ Email: _____

Name: _____ Email: _____

Name: _____ Email: _____

Name: _____ Email: _____

Name: _____ Email: _____

Name: _____ Email: _____

Name: _____ Email: _____

Name: _____ Email: _____

Name: _____ Email: _____

Or Join as a Student:

Open to any students at Florida schools offering a dental technology program.

☐ **FDLA Student Membership: \$15**

Select Your Level



HOTEL INFORMATION

Renaissance Orlando at SeaWorld

The 2016 FDLA Southern States Symposium & Expo will be held at the Renaissance Orlando at SeaWorld, located across from SeaWorld Orlando and adjacent to Aquatica and Discovery Cove. From the moment you step into the resort's lush, tropical landscape, you'll feel relaxed and refreshed as you immerse yourself in our flowing, aquatic-themed design. From the breathtaking 10-story sun-bathed lobby to the modern, residential suites and luxurious guest rooms – among the largest in the Orlando area – a truly distinctive, contemporary aquatic experience awaits.

The FDLA has secured a special reduced rate of \$154 inclusive of the resort fee for FDLA attendees. Also included in your rate are 50% discount on in-room high speed internet, complimentary self-parking and access to 24-hour fitness center. Make your hotel reservations directly with the Renaissance by calling **407.351.5555**. Be sure to mention you are with FDLA and make your reservations by **Wednesday, April 13, 2016** to receive this special reduced rate.



Great Benefits of Staying at the FDLA Host Hotel:

- Special reduced rate of \$154 for FDLA!
- The expo hall is minutes away from your hotel room.
- Increased networking time with attendees in the hotel's restaurants and lounge areas!
- Across the street from SeaWorld Orlando
- Visit www.renaissanceseworldorlando.com to learn more about this wonderful resort!




Please continue your support of the FDLA Southern States Symposium & Expo by staying at the Renaissance Orlando at SeaWorld, the appointed FDLA host hotel.

Need additional information on the 2016 Symposium & Expo? Please visit www.fdma.net.



REGISTRATION INFORMATION AND EXPO POLICIES

3 Ways to Register:

- 1  **ONLINE:** Go to www.fdma.net, click on the conference tab, then register online. Use your Master Card, Visa or AMEX.
- 2  **FAX:** This form with credit card information to **(850) 906-0077**
- 3  **MAIL:** Registration Form, **Postmarked by April 13, 2016** to: 2016 Southern States Symposium & Expo (FDLA), 1401 Maclay Commerce Dr., Tallahassee, Florida 32312



Questions?

For more information, contact FDMA's Southern States Symposium office by phone at 866.873.3352 or email fdlareg@mcraemeetings.com.

Refund Policy: Written notification is required for all refunds. Refund requests received by April 13, 2016 will receive a refund less a \$25 administrative fee. No refunds will be paid after April 13, 2016.

ADA: If you have special needs that require accommodations, please notify FDMA in writing no later than April 13, 2016.

Age Restrictions & Stroller Policy: No children in strollers or children under the age of 15 will be allowed access into the exhibit hall during booth setup, show hours or during booth dismantling.

Southern States Symposium & Expo Dress Code: The dress code for the 2016 Southern States Symposium & Expo daytime workshops and courses is business casual (no t-shirts, tank tops or flip flops please).

2016 SOUTHERN STATES SYMPOSIUM & EXPO REGISTRATION FORM

Please print or type. Please photocopy form for additional registrants. See page 48 for ways to register.



First Name: _____ Last Name: _____

Are you an authorized buyer for your dental laboratory? ☐ YES ☐ NO ☐ CDT ☐ RG ☐ DDS ☐ DMD ☐ Other: _____

State of FL Dental Laboratory/Dentist License Number (if applicable): _____ CDT/RG Number (if applicable): _____

Laboratory, Dental Practice or Organization: _____ ☐ CDL ☐ DAMAS

Address: _____

City: _____ State: _____ Zip: _____

Phone: _____ E-mail: _____

NOTE: For CDT/RG Registrations, you MUST include your CDT/RG Number to receive CE credits for attending the courses.

FULL REGISTRATION – MAY 6 & 7

Includes: Friday Keynote Sessions, Friday Lunch, Friday Night Reception, choice of Saturday courses, Saturday Lunch, unlimited admission to the Expo on Friday and Saturday

- ☐ FDIA Member..... First Member: \$295 (\$325 after 4/13/16)
☐ Each Additional Member from Same Lab: \$275 (Pre-registration Only)
☐ CDTs and Dentists.....\$345 (\$375 after 4/13/16)
☐ Non-Member\$550

☐ Add Friday Workshop*\$125

☐ Add Saturday Workshop*\$125

*(Full Registration Required – Must Pre-register to attend)

Indicate Workshop(s): _____

Subtotal Due: \$ _____

FRIDAY ONLY REGISTRATION – MAY 6

Includes: Friday Keynote Sessions, Friday Lunch, Friday Night Reception, unlimited admission to the Expo on Friday & Saturday

- ☐ FDIA Member..... First Member: \$195 (\$225 after 4/13/16)
☐ Each Additional Member from Same Lab: \$175 (Pre-registration Only)
☐ CDTs and Dentists.....\$245 (\$275 after 4/13/16)
☐ Non-Member\$450

Subtotal Due: \$ _____

SATURDAY ONLY REGISTRATION – MAY 7

Includes: Choice of Saturday courses, Saturday Lunch, unlimited admission to the Expo on Friday and Saturday

- ☐ FDIA Member..... First Member: \$175 (\$200 after 4/13/16)
☐ Each Additional Member from Same Lab: \$155 (Pre-registration Only)
☐ CDTs and Dentists\$225 (\$250 after 4/13/16)
☐ Non-Member\$450

Subtotal Due: \$ _____

EXHIBITS ONLY REGISTRATION

(Pass good for entry into Expo either Fri. or Sat. or both. Must register and receive a name badge to enter Expo Hall.)

- ☐ FDIA Member.....\$0 No Charge ☐ Non-Member\$50

ADDITIONAL EVENT OPTIONS

- ☐ FDIA Friday Luncheon\$35 each ticket
☐ FDIA Friday Night Reception\$50 each ticket
☐ Saturday Box Lunch\$35 each ticket

GOLF TOURNAMENT – THURSDAY – MAY 5

FDIA Matheson Memorial Golf Tournament

(See pg. 42 for more details. Must register and pay in advance.)

- ☐ Conference Registrant or Exhibitor\$99
☐ Golf Only\$115

Handicap/Estimated Average Score _____

Foursome Requests: _____

HANDS-ON WORKSHOPS NOTE: You must register in advance by April 13, 2016 for all Hands-on Workshops. Workshops have limited capacities and are on a first-come, first-served basis. Onsite registrations will not be accepted. See pages 40 & 41 for additional workshop information. Please provide names with registrations.

6 HR – OCCLUSION, MODEL ANALYSIS AND ITS

RELATIONSHIP TO IMPLANT DENTURES – FRIDAY, MAY 6

Includes: Friday Only Registration for Hands-on Workshop, Friday Lunch, Friday Night Reception, admission to the Expo on Friday & Saturday

- ☐ FDIA Member.....\$225 ☐ Non-Member\$300

- ☐ CDTs and Dentists.....\$250

8 HR – PLATINUM FOIL VENEERS – FRIDAY, MAY 6

Includes: Friday Only Registration for Hands-on Workshop, Friday Lunch, Friday Night Reception, admission to the Expo on Friday & Saturday

- ☐ FDIA Member.....\$225 ☐ Non-Member\$300

- ☐ CDTs and Dentists.....\$250

6 HR – THE ART OF COLOR CHARACTERIZING REMOVABLE PROSTHETICS – SATURDAY – MAY 7

Includes: Saturday Only Registration for Hands-on Workshop, Regulatory Standards Course, Saturday Lunch, admission to the Expo on Saturday

- ☐ FDIA Member.....\$225 ☐ Non-Member\$300

- ☐ CDTs and Dentists.....\$250

4-HR - ADVANCED DESIGN AND CUSTOMIZATION OF

3SHAPE – SATURDAY, MAY 7

Includes: Saturday Only Registration for Hands-on Demonstration, your choice of afternoon courses, Regulatory Standards Course, Saturday Lunch, admission to the Expo on Saturday

- ☐ FDIA Member.....\$225 ☐ Non-Member\$300

- ☐ CDTs and Dentists.....\$250

Payment:

SUB-TOTAL DUE FOR SYMPOSIUM & EXPO: \$ _____

FOUNDATION FOR DENTAL LABORATORY TECHNOLOGY DONATION: \$ _____

TOTAL ENCLOSED: \$ _____

☐ Check (payable to FDIA) Check # _____

Credit Card: ☐ MC ☐ Visa ☐ AmEx Charge \$ _____

CC #: _____

Exp: _____ Security Code*: _____

Cardholder Signature: _____

Print Name: _____

Billing Address (if different from above): _____

*The 3 digit number on the back of the card. AMEX: The 4 digit number on the front of your card.

Please refer to page 48 for registration information and expo policies.

For more information, contact FDIA's Southern States Symposium office by phone at 866.873.3352 or email fdlareg@mcraemeetings.com.



FDLA
Crowning
Achievement



2016 Award Nomination Form

I would like to nominate:

Name: _____

to receive the Crowning Achievement Award during the 2016 Southern States Symposium & Expo presented by FDLA in Orlando, Fla.

Based on his or her career accomplishments in the dental laboratory industry, the nominee should be considered in the area of (choose one):

☐ Education

☐ Laboratory Technology

☐ Inventions

☐ Manufacturing

☐ A brief statement describing the reasons for my nominee to be considered is enclosed.

Name _____

Company _____

Address _____

City _____ State _____ Zip _____

Phone _____

FAX _____

E-mail _____

Signature _____ Date _____

Return a copy of this form and supporting information to FDLA by April 15 to FDLA via e-mail to jillian@fdla.net, fax to (850) 222-3019 or mail to FDLA at 325 John Knox Rd, Ste L103, Tallahassee, FL 32303

Come visit
PREAT at

FDIA
FLORIDA DENTAL LABORATORY ASSOCIATION
SOUTHERN STATES
SYMPOSIUM & EXPO

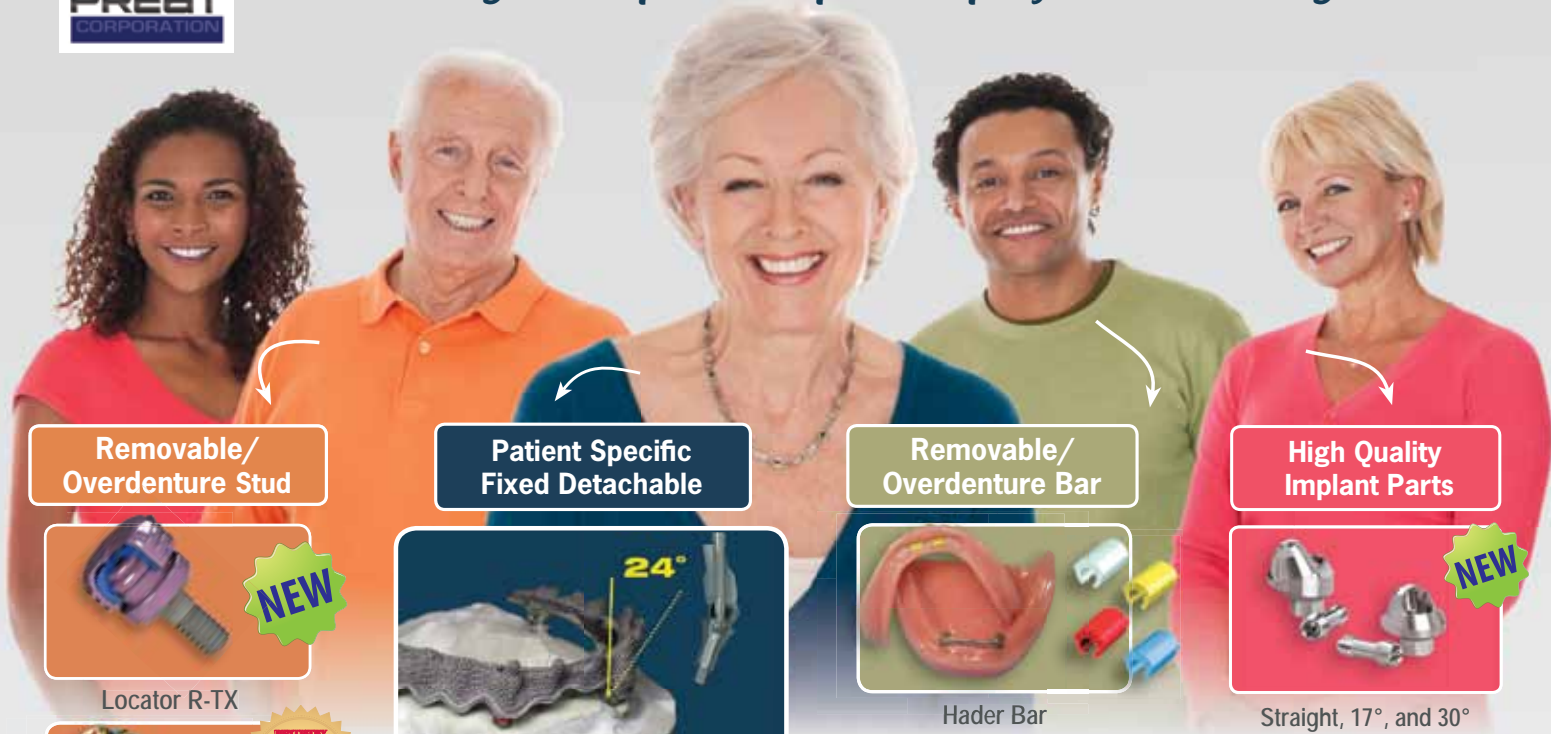
MAY 5-7
2016

May 6 • 9:45am • Dr. Mark Murphy
Managing the Modern Dental Lab Profitably

May 7 • 11:00am • Chris Bormes
Restorative Implant Options



*We support the largest selection of restorative options
...so that you can provide a patient specific solution every time.*



**Removable/
Overdenture Stud**



Locator R-TX

NEW

**Patient Specific
Fixed Detachable**



Save space, correct screw access holes,
provide improved esthetics

**Removable/
Overdenture Bar**



Hader Bar

**High Quality
Implant Parts**



NEW

Straight, 17°, and 30°
Multi-Unit Abutments compatible
with Nobel, Straumann, Astra, 3I,
Camlog, and Zimmer Implant systems



Locator Implant Abutment

**TOP 25
IMPLANT
PRODUCTS**
2014 READERS' CHOICE AWARD



Clix Ball Implant Abutment



ORing Implant Abutment



Shiner Magnet Implant
Abutment



Pearl Retention Surface



Primary and Secondary



Dolder Bar



Universal Plunger
Loc Attachment



Analog and Temporary
Cylinders



UCLA Abutments and TI Bases



Multi-Unit Parts

FREE DOWNLOAD OR
CALL AND GET YOUR
**140-PAGE
RESTORATIVE
PROSTHETIC
BOOK
TODAY!**

**For The Widest Selection of Attachment and Implant Components Anywhere,
Contact PREAT at 1800 232-7732 • www.preat.com**

Aurident Refining Services Turns Your Dental Scrap Into **CASH!**



Refining Services **You Can Trust** to Deliver **Maximum Returns.**

- Aurident Refining Services state-of-the-art assay procedures ensure accurate analysis of Gold, Platinum, Palladium & Silver contents.
- Fast, secure and flexible methods of return. Payment by check, credit or precious metal coins.
- From pickup to payment, we'll handle it all... **FREE SCRAP PICKUP**

\$50 OFF
Your Next Aurident
Refining Lot Charge

Offer expires
12-31-2016
Focus

WE'VE MADE IT EASY TO SAVE!

- 1** CALL 800-422-7373 TO SCHEDULE YOUR FREE SCRAP PICKUP. Include this coupon with your scrap.
- 2** OR SEND YOUR DENTAL SCRAP along with this coupon, by insured or registered mail, FedEx or UPS to: AURIDENT, INC., 610 SOUTH STATE COLLEGE BLVD., FULLERTON, CA 92831



**CALL FOR A FREE
SCRAP CONTAINER!**

 **AURIDENT, INC.**
Dental Alloys • Refining • Milling Services

Call for FREE Scrap Pickup! 800-422-7373

To see our complete line of alloys, products & services
and for **SPECIAL OFFERS** visit **aurident.com**