



focus



BRINGING THE **BASICS**

INTO THE **FUTURE**

 **Southern States**
SYMPOSIUM & EXPO
presented by FDIA

**REGISTRATION
INFORMATION**

included on page 29 inside.

NEW



TriLor **HIGH PERFORMANCE POLYMER**

- **LIGHTWEIGHT AND ESTHETIC**
- **FULL COVALENT BOND**
- **TIME AND COST SAVINGS**



Fabricated
at the
bench in
**under
30 minutes**

***It's your
choice***

ANALOG

TRILOR ARCH

3 DIFFERENT THICKNESSES



DIGITAL

TRILOR 98 AND 95

CAD CAM PUCKS



16mm, 20mm or 25mm

EXPECT SERVICE • EXPECT OPTIONS • EXPECT SUCCESS

www.PREAT.com • 800-232-7732 • info@PREAT.com

The Community of Dental Technology

Hello to all of my colleagues. We are all a part of a community. The community where you live and the community of our profession. In our professional community of dental technology, we share the same challenges, and we service the same customers. We compete with one another, but we can work together to help strengthen our profession and improve our individual businesses too.

With the continually changing environment of dentistry, we are faced with new products and processes. We don't always have the equipment or the experience within the walls of our individual businesses, and new equipment can be expensive. When faced with this type of challenge, we can reach out to another dental laboratory to fulfill the present need. There is usually another laboratory capable of fulfilling those requirements—and of course, this works vice versa. With the help of others in our community, we can develop a plan to build new services before we buy the expensive equipment needed.

Also, we all work by the same regulations of federal and state authorities. Knowing these regulations and how they apply to our profession is an individual responsibility, but regulations can sometimes be difficult to understand and legally cumbersome. Together, as a community, we can share the burden of legally deciphering how regulations apply to our profession. Also, there have been many changes made to regulations because our community took action to see how the regulations benefitted our profession. There will be more changes to pursue, now and into the future. Our community will do its best to see that our profession is heard from when they impact our profession.

Dental technology is a great profession to be a part of, and our community is tighter than ever. I like the thought that I can collaborate with another laboratory and we help one another build our businesses and our profession together. I hope all my colleagues agree with me on this and we can continue to collaborate while competing in the world of business. If we continue to be informed and contribute, this community will continue to be strong.



It has been a privilege representing the FDLA as your president. Thank you all for the dedication and passion that you give to this profession.

Dental technicians keep America smiling!

Tim Stevenson, CDT
FDLA president



Together, as a community, we can share the burden of legally deciphering how regulations apply to our profession.

FDLA Mission

Serving Florida's dental technology professionals as a valued part of the dental team enhancing oral health care.

FDLA Vision

Advancing the individual and collective success of Florida's dental technology professionals in a changing environment.

Values Statement

FDLA's board of directors and professional staff are guided by these principles:

- Integrity
- Leadership
- Recognition
- Safety
- Acceptance
- Innovation

focus

Florida Dental Laboratory
Association
325 John Knox Rd,
Ste L103
Tallahassee, FL 32303
Phone: 850-224-0711
Fax: 850-222-3019

Southern States Symposium & Expo Office

866-873-3352
E-mail:
membership@fdla.net
Website: www.fdla.net

Published quarterly by the
Florida Dental Laboratory
Association. The FDLA
is not engaged in legal,
accounting, financial or
other professional
counseling and readers
are cautioned to contact
their professional advisors
for advice. FDLA simply
gathers information from
various sources to keep
the membership informed.

focus Staff

**Jillian Heddaeus, CMP,
IOM**
Executive Director &
focus Publisher
jillian@fdla.net

Bennett E. Napier, CAE
Senior Advisor
bennett@fdla.net

Cassandra Corcoran
Editor
editor@fdla.net

Maureen Turner
Advertising Sales
advertising@fdla.net

Christina Welty
Program Manager
membership@fdla.net



6 Dental Lab Investigations

8 Screw Retained, Full Circle

By Conrad J. Rensburg, CDT

14 Case Study: Digital Denture Excellence... Analog, Digital or Both?

By Bill Barton, MBA, BS, CDT, TE

18 Resetting Titanium Copings

By Chris Peterson, CDT

22 Zero In

FDLA calendar and classifieds.

26 The Hub

FDLA news and recent happenings.

28 Focal Point

Laugh Your Way Through Change

29 2019 Southern States Symposium & Expo Registration Information

COVER IMAGE CREDITS:

Photo on the screen, credit: Bill Barton, MBA, BS, CDT, TE

Photo of hands, credit: Chris Peterson, CDT

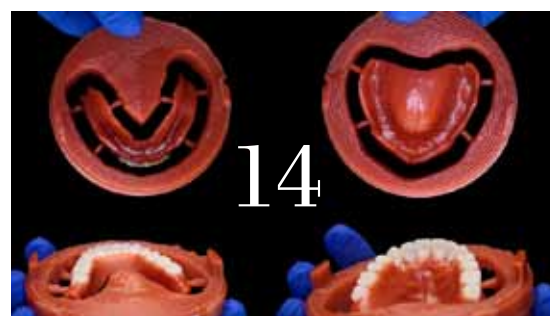
Advertisers Directory

Atlanta Dental Supply Inside Back Cover
www.atlantadental.com

Aurident, Inc. Outside Back Cover
www.aurident.com

B&D Dental page 21
www.BnDdental.com

Ivoclar Vivadent, Inc. pages 24 and 25
www.ivoclarvivadent.com



Kulzer page 5
www.KulzerUS.com

NADL page 7
https://nadl.org/classifieds

PREAT Inside Front Cover
www.PREAT.com

Zahn Dental page 13
www.zahndental.com



Like us on Facebook at facebook.com/floridadentallaboratoryassociation



Precious Metal Refining

Tested. Trusted. Honest.

Refine direct for highest returns.

Don't lose money by accepting cash on the spot. Get more for your scrap - skip the middleman and refine direct with Kulzer, one of the world's largest refiners.

Why Refine with Kulzer?

- Higher Profits - We have a robust process that accurately values your scrap
- No Cost to You - We cover all materials and shipping costs
- Autoship Program - Automates your refining process
- Full Assay Report - Detailed scrap value report provided
- No middleman - Come straight to the end refiner
- No Hidden Fees - Transparent, easy-to-follow fee structure
- Payout - In only 7-10 business days

Visit mydental360.com/refining to learn more about your autoship program for scrap materials.

Get An Extra

5%
for your
scrap!

Include this certificate with your next shipment and receive an additional 5% for your scrap.

Giving a hand to oral health.



KULZER
MITSUI CHEMICALS GROUP



Dental Lab INVESTIGATIONS

The Florida Department of Health Division of Medical Quality Assurance (MQA) is dedicated to the mission of the Florida Department of Health to protect, promote and improve the health of all people in Florida. It works with boards and councils to license and regulate health care facilities and more than 200 license types in over 40 professions.

Dental Lab *Complaints*



0

Statutory
Reports



24

Complaints
Received



19

Complaints
Deemed **Legally
Sufficient**



2

Completed
Inquiries



18

Completed
Investigations



1,021

Completed
Inspections

A CORE BUSINESS FUNCTION OF MQA IS TO ENSURE THE SAFETY of all citizens and visitors of Florida. This is done through enforcing rules and regulatory laws for all health care practitioners. MQA's Investigative Services Unit (ISU) reviews and investigates consumer complaints made against health care providers. During the 2017-2018 fiscal year, MQA investigators reviewed thousands of complaints and completed 4,508 investigations against licensed health care providers.

Unlicensed Dental Labs



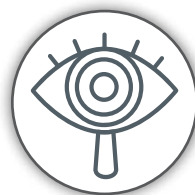
19

Unlicensed Dental Laboratory Complaints Received



18

Unlicensed Dental Laboratories Referred for Investigation



0

Unlicensed Dental Laboratories Inquires Completed



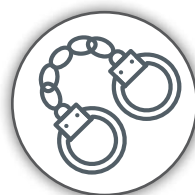
20

Unlicensed Dental Laboratories Investigations Completed



10

Unlicensed Dental Laboratories Cease and Desist Orders Issued



8

Unlicensed Dental Laboratories Referred To Law Enforcement

FROM EDUCATING THE PUBLIC TO CONDUCTING COMPLEX INVESTIGATIONS and issuing cease and desist orders, MQA's Unlicensed Activity (ULA) program is dedicated to protecting the people of Florida and remaining at the forefront of health care regulation. Working in Tallahassee and 11 field offices throughout the state, the ULA program investigates all unlicensed health care activity complaints and has long-standing partnerships with law enforcement and state attorney offices to prosecute individuals practicing without a license.



nadl.org/classifieds

NADL Launches New Career Center



Are you a dental technician seeking employment? Or an employer desperately seeking good technicians? NADL has the answer for you!

The new NADL Career Center was created to help match open dental laboratory technology positions with those seeking employment in the profession and offers a quick and easy posting platform at an affordable price.

🔗 **Here's what you need to know:**

Website classified advertising rates per **31-day period**

NADL Members: **\$75.00**

Non-NADL Members: **\$175.00**

NADL is pleased to offer a **discount of 10%** to NADL members for purchasing three or more 31-day periods.

Advertisements are usually processed and posted online **within 2-3 business days** of receipt of the completed order.

To view available job positions or to post a position, please visit **nadl.org/classifieds**. For more information please contact **CareerCenter@nadl.org** or call **(800) 950-1150**.

NADL: Bringing the resources of an entire industry to you.

Screw Retained, FULL CIRCLE

By Conrad J. Rensburg, CDT

IN THE LATE '90s, when I restored my first implant retained case, the first thought that came to mind was “I just created my first tooth on a stick!”

**IN TODAY'S
MARKET, LABOR
IS NOT ONLY
THE MOST
EXPENSIVE,
BUT ALSO A
DENTAL LAB'S
MOST VALUABLE
RESOURCE.**

Most early-stage implants were placed at, or just below, tissue level and had very small diameter restorative platforms. This caused a constant struggle for lab technicians to create proper emergence and height of contour. Not being able to predictably complete the buccal corridor left many patients looking as if they had no tooth in that position, even after placing the new crown. As screw-retained was the only restorative option, dealing with the screw access position remained the responsibility of the surgeon placing the implant. Although dental implant technology was a revolutionary idea at the time, early screw-retained restorative options were nothing more than functional at best.

Fortunately, in the mid-2000s, when CAD solutions hit the market, most of these esthetic issues were resolved with this new technology. Unfortunately, peri-implantitis and the link to intra-oral cement rapidly slowed the demand for

cement-retained solutions and once again started a shift back to exactly where we came from, screw-retained prosthetics.

For many years, UCLA cast abutments and titanium interfaces, better known as Ti-bases, were our only option. With these came their own inherent problems. Titanium bases, with their one size-fits-all, cementable area often had a poor crown to support ratio leading to crowns de-bonding or simply fracturing of the base. UCLA abutments proved to be not as predictable or efficient as milling from a solid block of titanium.

To answer the growing market demand for screw-retained solutions, Atlantis suprastructures launched a new product called Atlantis Custom Base abutments, better known as ACB.

ACB addresses multiple issues:

- Arduous and technique sensitive lab processes
- Inadequate cementing support on Ti-bases
- Limited material choices on UCLA
- Clinical cement clean-up
- Screw access positioning if combined with ASA (Angulated Screw Access)

In today's market, labor is not only the most expensive, but also a dental lab's most valuable resource. Lab owners agree, protecting their most valuable asset, talented hands, by not using that resource to create sub-structures, allows them to focus this resource on the artistry needed to create these prosthetic solutions.

The above can easily be achieved by utilizing FDA-cleared milling facilities like Atlantis suprastructures.

Figure 1:
Soft tissue model



CASE PROCESSING

For this case, my laboratory received a PVS implant level impression to restore single unit implant supported crowns in position Nos. 18, 19 and 20 on Dentsply EV implants. Dr. David Hedgecoe from Fayetteville, N.C. was the surgeon and restoring dentist on this case.

DIGITAL IMPRESSION

We imported the data into the 3Shape design software and sent it to Atlantis digitally.

PVS WITH 3SHAPE SOFTWARE

After pouring a soft tissue model and scanning on a bench top 3Shape scanner, the digital file is sent to Atlantis (**Figure 1**).

PVS WITHOUT 3SHAPE SOFTWARE

Simply pour the soft tissue model per usual and send the case to Atlantis. They will digitize it.

DESIGN PROCESS

In Atlantis Web order, we requested an ACB abutment in titanium or gold-shade. Overlay crown material can be ordered in either full contour zirconia, coping support structure for layering or an Atlantis Core file. Designing the case from a Core file allowed the lab to design the case before receiving the abutments, as well as to choose the proprietary CAD overlay material. The case was diagnostically waxed by the Atlantis team and prepared for abutment design within the VAD software (**Figure 2**).

The ACB abutments were planned within the diagnostic parameters and digitally returned to the lab for review and approval through the Atlantis Web order software (**Figure 3**).

In this case, we requested ASA (Angulated Screw Access) to reposition the screw access in the central part of our crown for maximum strength (**Figures 3A and 4**).

Once potential changes were made and approved, Atlantis milled the abutments and returned them to the lab. This process requires three days processing without overlay material (ACB abutment only) or five days with zirconia crown or coping overlay material. We requested gold-hue titanium ACB abutments with zirconia support structures ready for layering ceramics (**Figure 5**).

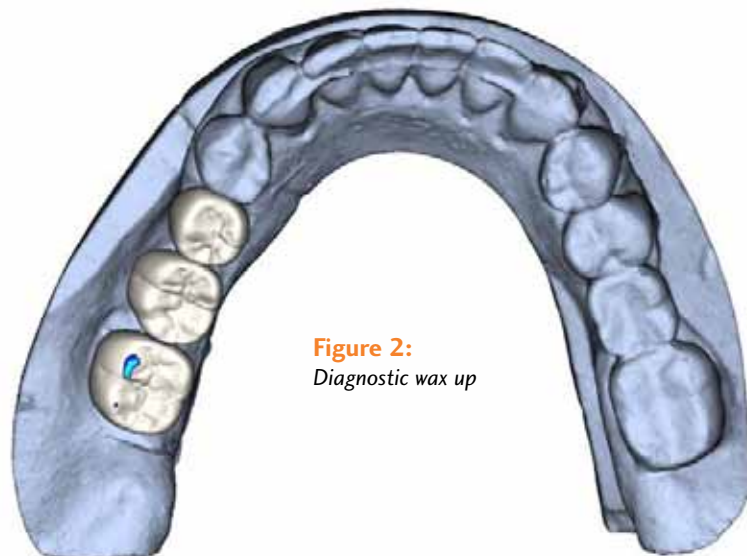


Figure 2:
Diagnostic wax up

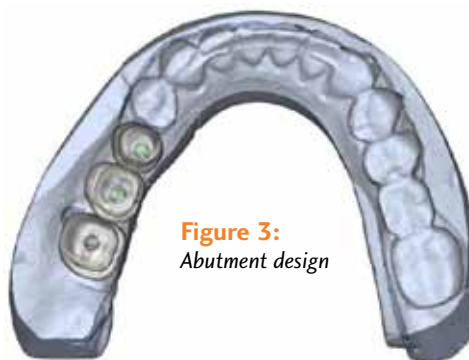


Figure 3:
Abutment design



Figure 3A:
Atlantis ASA technology



Figure 4:
Repositioning of the screw access position with ASA



Figure 5:
Zirconia support structures ready for ceramic layering



Figure 6:
*e.max liner and overlay
ceramics for zirconia layering*



Figure 7:
Final ceramic layering



Figure 8:
*Screw-access only allows
for the screwdriver not
the screw*

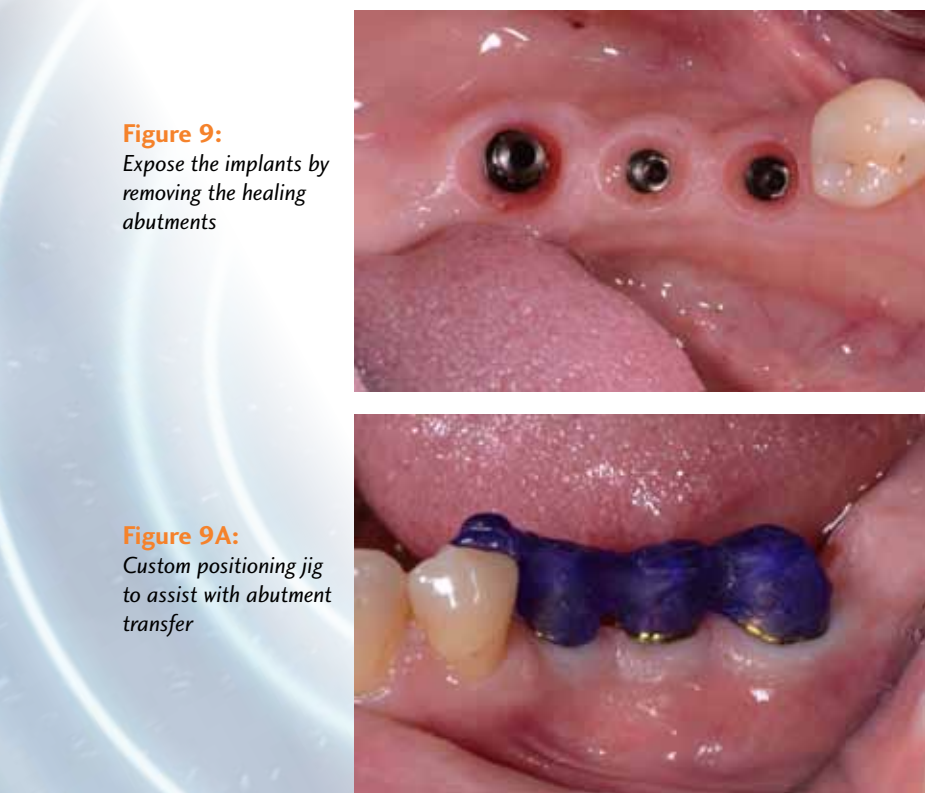


Figure 9:
*Expose the implants by
removing the healing
abutments*



Figure 9a:
*Custom positioning jig
to assist with abutment
transfer*



Absolute Dental Lab has exclusively used Ivoclar e.Max nano-fluorapatite glass ceramics on zirconia frameworks since its introduction into the market place (**Figure 6**).

Treating the zirconia framework with ZirLiner, fired at a high temperature of 960° Celsius and holding without vacuum for 60 seconds, has proven to create a very effective bond between the overlay ceramics and zirconia support structure. We have had no reportable de-bonding issues over many years of using this product (**Figure 7**).

SCREW ACCESS

It is important to note that once we employ Angulated Screw Access on an abutment, it will enlarge the screw access hole. This larger than normal screw access hole allows for the screw to redirect itself to engage the implant. However, if an Atlantis milled zirconia crown overlay substructure is ordered with an ACB abutment, this allows us to minimize the screw access hole diameter through the crown (**Figure 8**).

It is important to note the screw access hole only allows for the screwdriver to pass through and is not big enough for the actual screw to pass through. This means when we extra-orally cement the crown to an ACB abutment, the screw must be inside the abutment before cementing. This reduced screw access hole greatly improves the strength of our overlay material as well as the esthetics.

CLINICAL DELIVERY

Our lab offers customers two options when delivering ACB screw retained cases.

1. Crown pre-cemented to abutment delivered as one piece.
2. Crown and abutment delivered as two pieces ready to cement intra-orally.

Delivering the case in two pieces allows the clinician to deliver with a more traditional cement-retained protocol.

By cementing intraorally, the clinician effectively verifies the model/impression accuracy. After cementing, the prosthesis can be removed, the cement cleaned up and the screw-retained prosthesis delivered. This is our recommended protocol when given a choice.

When our lab delivers a case in two pieces, we will fabricate a positioning jig to assist the clinician with accurate abutment positioning (**Figures 9 and 9a**).

Figure 10 shows the abutments in place ready for crown try-in and adjustments. After the abutments were torqued to the manufacturer specifications, the crowns were placed, and any required adjustments were done extra-orally. This technique greatly improves the clinical efficiency of adjusting and delivering screw-retained crowns (**Figure 11**).

The model and impression were verified at the initial bite appointment. This allowed Dr. Hedgecoe to cement the crowns extra-orally. If the model was unverified, cementing orally would effectively verify the model and negate any possible model discrepancies (**Figure 12**).

Cementing on the verified model assists in a more efficient clean-up (**Figure 13**).

Figure 14 shows the effectiveness of extra-oral cement cleanup. The case exhibited no cement residue at the abutment crown interface. The cemented one-piece crown on ACB abutment was transferred back to the mouth and torqued to manufacturer specification. Teflon tape was used to protect the screw heads before finally filling the screw access with a composite build-up (**Figure 15**). The smaller than normal screw access holes in the ACB crowns made for a more effective and esthetic composite build up (**Figure 16**).

UCLA cast screw-retained cases were known to fracture around the large screw access holes. In



Figure 10: ACB gold hue abutments seated



Figure 11: Crowns adjusted and ready for cementing

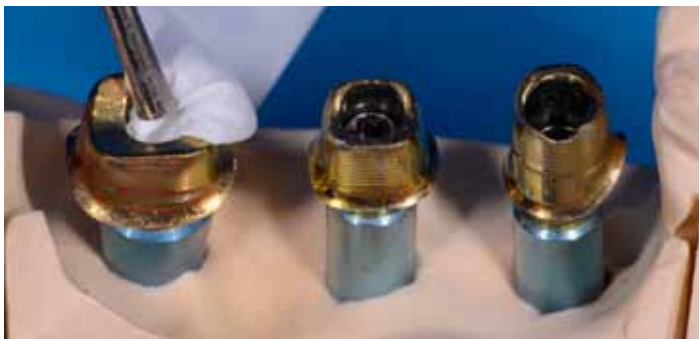


Figure 12: Protecting the screw with teflon tape before cementing



Figure 13: Cement clean up



Figure 14: No cement residue between the abutment and crown interface



Figure 15: Teflon to protect the screw head



Figure 16: Composite build up to seal the screw access



Figure 17:
Close up of the composite exhibits no metal bleed through

the past, gray unaesthetic composite plugs were caused by the underlying metal sub-structure color. A close-up of the composite plug shows how the use of zirconia and the ability to custom design the ACB abutment with a gold hue color, helped us to prevent any metal bleed through from the underlying abutment (**Figure 17**). The lateral view shows a broad emergence to keep the interproximal opening cleansable, yet esthetic and



Figure 18:
The lateral view

Figure 19:
Final occlusal check



functional. The height of contour on our crowns matched the remaining dentition (**Figures 18 and 19**).

The use of Atlantis Custom Base abutments has proven to be a very efficient way for Absolute Dental Lab to restore our screw-retained cases. We have found this restorative option to require less hand processes, allowing us to produce a more economical restorative option with a greater profit margin for our lab. 📌

AUTHOR'S NOTE:

At the time of this publication, Angulated Screw Access on ACB was only available on Dentsply TX & EV implant platforms. Atlantis is currently awaiting 510(k) FDA clearance for most of the other popular implant platforms. This is expected to be available in the first quarter of 2019. The author would like to thank Drew Van Aarde, Absolute Dental Lab, head of ceramics, for his ceramic artistry in this case and Dr. David Hedgecoe for sharing the final case pictures for this article.

ABOUT THE AUTHOR:

Conrad J. Rensburg, CDT, is owner and head of the dental implant division at Absolute Dental Lab in the Triangle region of North Carolina. He graduated with a four-year degree from Pretoria Tech in 1992. He is certified with an ND in technology and specialized with an NHD in fixed prosthetics. He is a member of the prestigious PEERS Prosthodontic Association, is registered with the NADL and NCDLA as well as being certified by the SADTC. He has specialized in fixed dental prosthetics with an emphasis on dental implants since the early '90s. As a CE-accredited speaker since 2002, he has presented at hundreds of events across the U.S., including the Academy of Osseointegration, Global and U.S. symposiums, World Summit Tour and a multitude of smaller study club events. His emphasis as a speaker is on keeping today's clinicians abreast with the latest advancements in screw-retained and hybrid implant retained and supported options. As the author of multiple published articles, his focus is on CAD implant design protocols and fixed as well as removable hybrid implant supported techniques. He can be contacted at www.absolutedentallab.com or conrad@absolutedentalservices.com.



Drew Van Aarde



Dr. David Hedgecoe



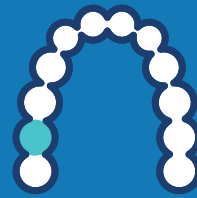
Conrad J. Rensburg, CDT

We speak dental.

End-to-end solutions for dental labs



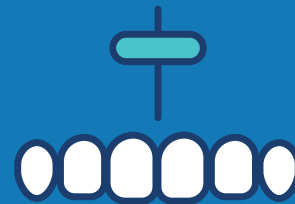
CAD/CAM Solutions
With industry-leading tech support



Digital Materials
Innovative materials for highly
esthetic results.



Laboratory Products
99% of products shipped the
same day.



Outsourcing with CMC
Cutting-edge indications.



Denture Teeth
Largest distributor of denture teeth.



Financial Services
Low rates, affordable payments,
and fast approval processes.

Case Study:

Digital Denture Excellence... Analog, Digital or Both?

I think there is no better and exciting time to be a technician than there is today! In 1982, while in the Air Force and fabricating my first set of dentures, I never imagined how the process would change in the future.

With the digital tools and materials at hand, there is no good reason not to incorporate some aspect if not all of your denture production to digital workflows.

Today, one of my roles with Ivoclar Vivadent is evaluating new materials and processing workflows. In 2014, I took on the North American evaluation and development of what is known today as Ivoclar's Digital Denture Professional (DDP) Add-On. In conjunction with 3Shape's denture module, the DDP provides Ivoclar's tooth libraries specialized optional clinical instrumentation (UTS CAD & Gnathometer CAD), and the exclusive CAM5 output to include the oversized mill process.

Ivoclar Digital's Computer Aided Manufacturing (CAM) CAM5 output generated by the Computer Aided Design (CAD) is directly correlated to facilitate efficiencies with Ivoclar's PrograMill CAM software and mills. Of course, standard STL outputs can be generated for other print or milling devices. However, the STL CAMing is not optimized for efficiency. The number of workflow options with the DDP Add-on are numerous and coupled with the PrograMill manufacturing platforms brings a level of excellence that is unsurpassed. This gives the laboratory flexibility to meet their clinicians' needs without asking them to change their clinical processes. The workflow inputs range from basic impressions or models with a bite record to the closed mouth functional impression technique to include a gothic arch tracing and almost everything in between.

The following case demonstrates the workflow option for a traditional wax try-in. The case was scanned, designed, and the dentures milled from the ProArt CAD Wax material and the final restoration was processed in the IvoBase injection system. This workflow fits nicely into the smaller laboratories who choose to outsource the milling operation, however, keep the final processing in-house.

Of course, the beauty of the DDP is that there are other variations to this technique, such as milling a monolithic try-in or printing the try-in base and milling the teeth from the Vivodent CAD disk and duplicating in silicon to process. Today, the only limits to digitally fabricating dentures is virtually in the minds of the technician.

We are creative individuals, and with the digital tools and materials at hand, there is no good reason not to incorporate some aspect if not all of your denture production to digital workflows.

Concerning this patient, I wish to thank Eric Kukucka, DD, a denturist in Windsor, Ontario, Canada, who has an in-practice laboratory and chose the traditional wax try-in with the carded manufactured tooth workflow.

Appointment 1:

Preliminary impressions, Centric Tray bite registration, and UTS CAD measurements (Camper's Plane and bi-pupillary line) were taken.



Figure 1:
Centric Tray Bite and Impressions



Figure 2:
UTS Measurement

Lab Procedure 1:

Impressions were scanned and the 3D Biteplate designed and fabricated with the ProArt CAD Try-in disk.



Figure 3: (above)
3Shape D1000

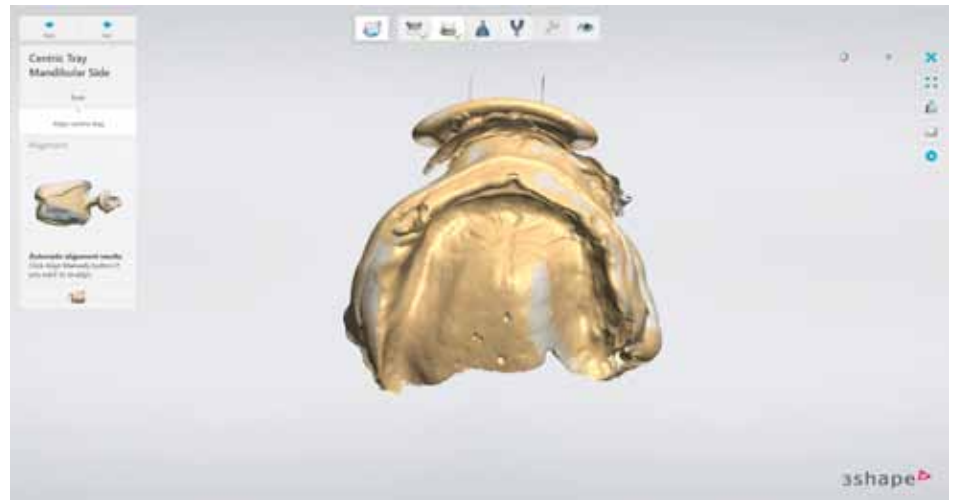


Figure 4: (above)
Scan Centric Tray and Impressions

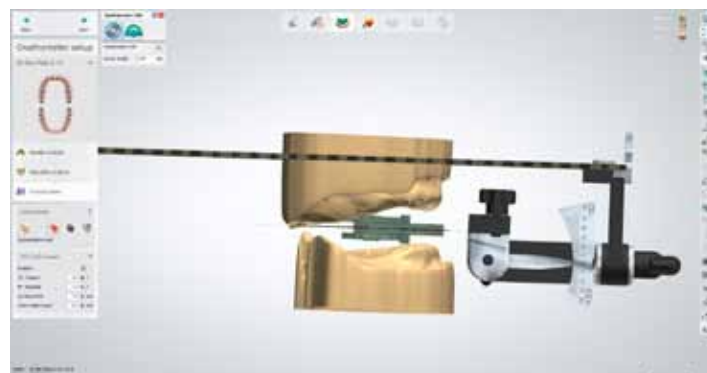


Figure 5: (left)
Set Occlusal Plane

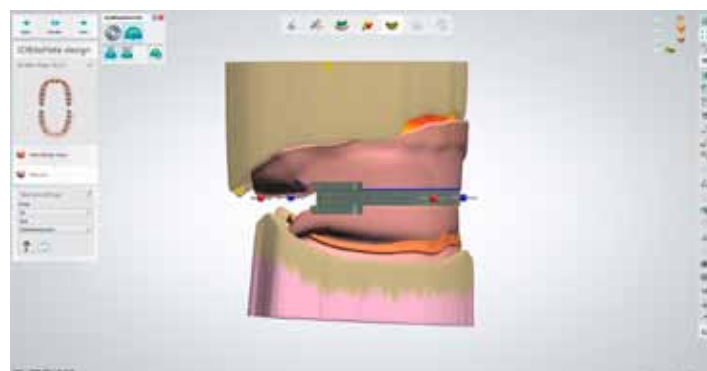


Figure 6: (left)
Design 3D Biteplate



Figure 7: (left)
Milled in PM7

Figure 8: (right)
3D Bite Plates with Gnathomer CAD



Appointment 2:

Closed-mouth functional impressions and UTS measurements were taken. A gothic arch tracing was completed to determine centric relation, mid-line, lip-line, and tooth mould. Shade selection was made.



Figure 9: Final Impressions



Figure 10: UTS Measurement

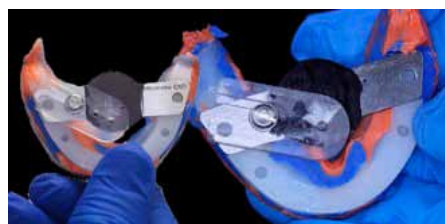


Figure 11: Gnathometer CAD Tracing



Figure 12: Midline and High-Lip Line

Figure 13:
Tooth Selection



Lab Procedure 2:

The 3D bite plate impressions were scanned. The try-in dentures were designed and fabricated with the ProArt CAD Wax Pink disk, ProArt CAD Transfer disk material and Phonares II teeth.



Figure 14:
(above)
Scan 3D Bite
Plate Impression

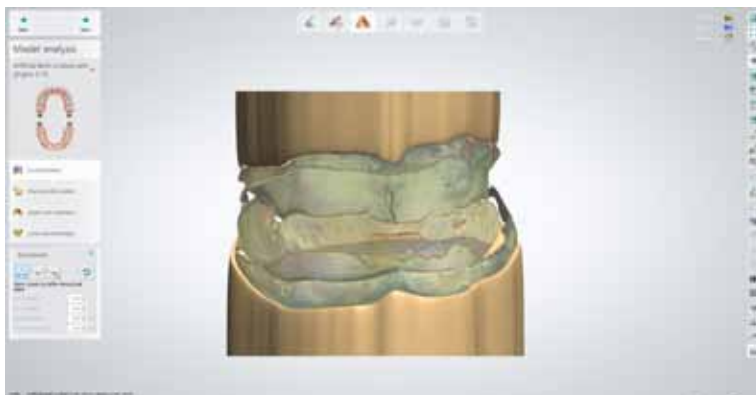


Figure 15:
(left)
Prepare Scans

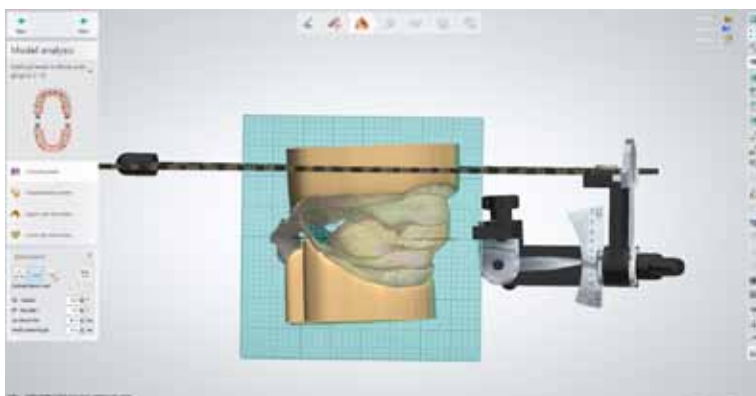


Figure 16:
Set Occlusal
Plane

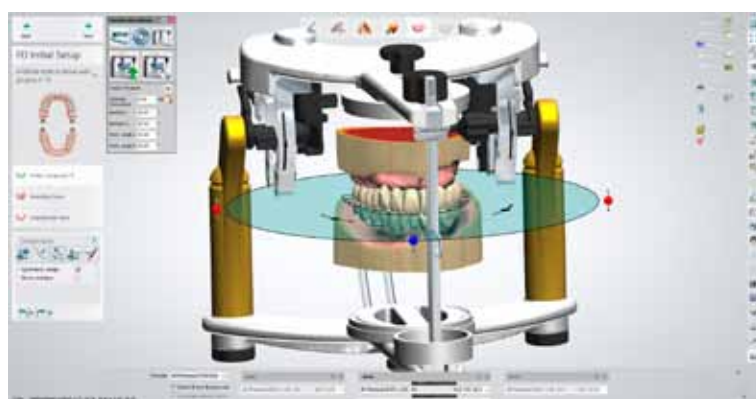


Figure 17:
Design Dentures



Figure 18: Milled in PM7

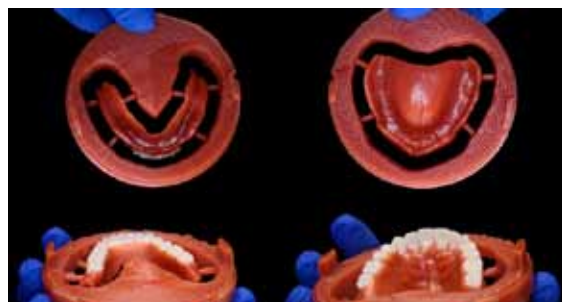


Figure 19: Remove From Disks and Smooth Bar Attachments

Appointment 3:

This is the try-in appointment.



Figure 20: Try-in

Lab Procedure 3:

The procedure takes place at the practice. Minor tooth position adjustments are made and the wax try-in is conventionally processed with the Ivoclar injection system.



Figure 21: (left)
Slight Tooth Position
Adjustment



Figure 22: (above)
Flask for Injection



Figure 23: (above)
Inject with Ivoclar
System



Figure 24: (left)
Finish and Polish

Appointment 4:

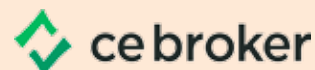
At this final appointment, the restoration is inserted.
The patient was very satisfied.



Figure 25: Insertion

About the Author:

Bill Barton, MBA, BS, CDT, TE, is the associate manager of digital services for Ivoclar Vivadent, Inc., where he leads the digital services customer support team and training programs at the company's International Centers for Dental Education and performs in-depth product testing related to digital processes. A technician, manager and educator with more than 36 years' experience in all phases of fixed and removable prosthodontics, he served 25 years in the U.S. Air Force prior to joining the Ivoclar Vivadent technical services department in 2009. 📍



Earn continuing education credits for this article and quiz!

Receive .5 hours CDT/RC Scientific credit and .5 hours of General credit towards your state of Florida dental laboratory renewal by reading this article and passing the quiz. To get your credit, complete the quiz located on the FDLA website at www.fdma.net using the *focus* Magazine link. Once you have completed the quiz, fax it to FDLA at 850-222-3019. This quiz is provided to test the technician's comprehension of the article's content and does not necessarily serve as an endorsement of the content by FDLA.

By Chris Peterson, CDT

RESETTING TITANIUM COPINGS

By nature, most technicians crave control. We think that if we can control the entire process, we can ensure limited manufacturing remakes. However, I've realized that the key to successful outcomes is not control, but collaboration. We all benefit when we invest in training and share knowledge amongst our lab teams and fellow technicians. These days, we not only have the privilege to collaborate with technicians, but our partner clinicians as well.



Joel Baez, DMD, DICOI

At Peterson Dental Laboratory, case demographics have vastly changed during the past 20 years. Thirty-eight percent of our cases are full arch rehabilitations, and this percentage continues to grow. I can attribute most of the success to my father, who began the immediate load journey in 1989 when he completed his first immediate load prosthesis. He believed in sharing knowledge with our clinical partners, and we have offered chairside services ever since. The chairside technique shown in these photos was provided by my friend and colleague Joel Baez, DMD, DICOI.

The Learning Curve

There is always a learning curve when fabricating new products in the lab. If you are considering whether to start assisting doctors with immediate load cases, you will have to be able to think on your feet. Situations will arise in surgery or a delivery appointment that will push you to think outside the box—and fast.

To Fit or Not to Fit?

In the rest of this article, we will mainly focus on the fit of a screw-retained immediate load denture prosthesis. In my experience, we have found five areas that will cause most of the inaccurate fit issues.

5 Main Causes

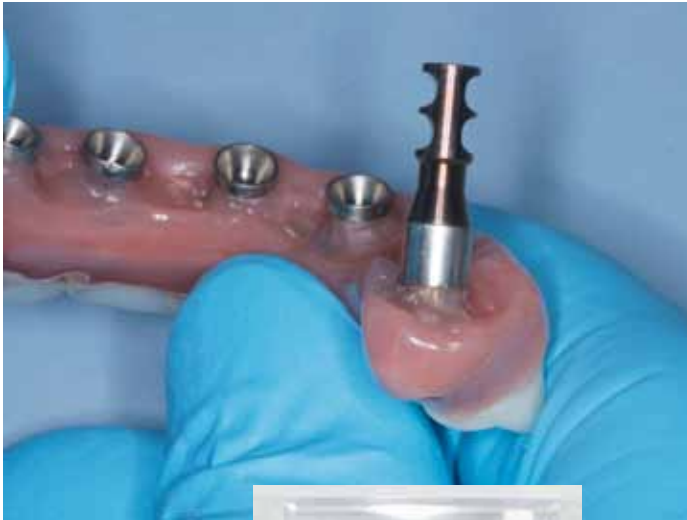
I will start in chronological order of events.

1. Re-torquing in a multi-unit abutment after the impression has been taken. Our lab delivers the provisional the day after surgery and sometimes the restorative dentist will re-torque the abutment, causing the platform to seat deeper into the implant tapered connection.
2. Over tightening the multi-unit abutment protection cap on an implant with low torque value. When removing the cap, sometimes inadvertently you can spin an implant. Remember that an implant requires less torque to remove it than to place it.
3. A suture caught between the multi-unit abutment and the impression transfer will leave a gap that will transfer to the final seat of the restoration.
4. Excess blood creates gaps around impression transfers causing them to fit loosely. This is a common issue when capturing impressions immediately after surgery.
5. Inserting lab analog incorrectly. Most multi-unit analogs only mimic the platform seat and dome top, not the implant itself. The vestibule area of the impression can put pressure on the apical area of the analog causing unneeded horizontal pressure. In our lab, we have custom angled multi-unit analogs that avoid contacting these areas.

Here is our lab's process for resetting a cylinder or picking up a cylinder.

Figure 1:

Secure analog onto the cylinder with a screw.



Figures 2 and 2A:

Heat analog with a torch. Heat from analog will transfer to cylinder causing cement or acrylic to degrade or soften.



Figure 3:

Remove cylinder with pliers. Use twisting and pulling motion.



Figure 4:

Remove cement or acrylic residue by sandblasting.



Figure 5:

Insert and screw cylinder to the abutment.



Figure 6:

Seat denture passively. Secure with all screws. Leave space for injecting composite.



Figure 7:

Inject flowable composite around the cylinder.



Figure 8:

Remove restoration and fill any gaps. Use carbide to shape tissue emergence.



Figure 9:

The restoration. 📌



About the Author:

Chris Peterson, CDT, is the vice president of Peterson Dental Laboratory, CDL, in Delray Beach, where he employs a team of more than 50. He has been a technician for 11 years and part owner of Peterson Dental since 2015. He is the FDLA's secretary and has served the past two years. Joel Baez, DMD, DICOI, practices in Pompano Beach, Florida. He is one of the top leading young dentists in South Florida.



INTRODUCING
ORIGIN[®] Beyond⁺ MULTI[™]

**Pre-shaded Multi
with *Smart Incisal[™]**

- Maximum Strength (>1200 MPa*)
- Anterior Translucency* (48%, STML)
- Multi Chroma and Blue Incisal Enhancer Features Incorporated Into One Disc



*Please visit BnDdental.com for details

ORIGIN[®] Beyond⁺ HYBRID[™]

Multi Translucency, Multi Strength, Multi Chroma Zirconia (Patented)

Ultra Translucency (50%) on Incisal, High Strength (>1100 MPa) at Cervical

ORIGIN[®] Beyond⁺ MONO[™]

Simple & Cost-Efficient 16 Pre-shaded Mono Zirconia

Maximum Translucency (50%), Full Contour

ORIGIN[®] Beyond⁺ Plus[™]

The True Next Generation High Performance Zirconia

Anterior Translucency (48%), Maximum Strength (>1250 MPa)

ORIGIN[®] LIVE[™]

Your Choice for Strength & Aesthetics for Long Span Bridges

High Translucent Full Contour (46%) Maximum Strength (>1300 MPa)

ORIGIN[®] Beyond⁺

Anterior & Posterior | Full Contour

Maximum Translucency (50%) Full Contour



Shaded the Origin Way!

Zirconia Coloring Liquids imparting natural color quickly & easily with consistent results.



www.BnDdental.com | sales@BnDdental.com | 800.255.2839

**B&D DENTAL
TECHNOLOGIES**



2018-2019 Board of Directors

PRESIDENT

Tim Stevenson, CDT
Stevenson Dental Technology, CDL
Beverly Hills
tim@sdt-labs.com

PRESIDENT ELECT

Alexander Wünsche, CDT
Zahn-technik Inc., CDL
Miami
alex@zahnlab.com

TREASURER

Dory Sartoris
DCS Dental Lab, Inc.
Jacksonville
dory@dcslab.com

SECRETARY

Chris Peterson, CDT
Peterson Dental Laboratory
Delray Beach
chris@petersondentallab.com

DIRECTORS AT LARGE

Samantha Drake, CDT
Sorriso Dental Studio
Sarasota
sorrisodentalstudio@toothfairy.com

Rob Greeson
Rob Greeson Dental Studio
Bonita Springs
robgreesondental@gmail.com

Douglas Jackson, CDT
Touchstone Dental Laboratory, LLC
Altamonte Springs
touchstonelab@cfl.rr.com

Bryan Johnson
Sterling Dental Arts
Merritt Island
sterlingdntlarts@gmail.com

Jenny Peterson
Peterson Dental Laboratory
Delray Beach
jenny@petersondentallab.com

James Wells, CDT
Inman Orthodontic Laboratories, Inc.
Coral Springs
james@inmanortho.com

PAST PRESIDENT

Lenny Herrera, CDT
The Surveyor Dental Arts
West Park
survdentsupp@aol.com

SUPPLIER REPRESENTATIVES

Nick Azzara
DNS Consulting
Winter Springs
Nick@DNSConsultinggroup.com

Lynette Wiggins
Benco Dental
Altamonte Springs
lwiggins@benco.com

EXECUTIVE DIRECTOR

Jillian Heddaeus, CMP, IOM
Tallahassee
jillian@executiveoffice.org

July 18-19

FDLA Workshop – Sarasota

2-Day Complete Denture Workshop

Presented by Don Yancey, CDT

International Center for Dental Education

Sponsored by: Ivoclar Vivadent, Inc.

www.fdla.net | 850.224.0711



Don Yancey, CDT



Suspect An Unregistered Florida Lab?

Contact FDLA anonymously and FDLA will report on your behalf.

www.fdla.net/reportunlicensedlab

Classifieds

Full-Time Ceramist- DCS Dental Lab (Jacksonville, FL)

We are searching for a quality-conscious technician to join our high-end laboratory. Qualifications: a minimum of 4 years experience, excellent communication skills and the ability to consult with dentists clinically and professionally. We are looking for someone who is skilled in ceramics, crown and bridge and implants. Duties include but are not limited to fabricating anterior and full mouth ceramic restorations, waxing and finishing metal frameworks, CAD/CAM design, etc.

We offer benefits, and a friendly "Whatever it Takes" atmosphere. To apply, please email your resume to dory@dcslab.com.

Classified Line Advertising (print and online opportunities)

Classified Line Ads are \$125 (members) and \$175 (non-members) for the first 50 words, and \$.25 for each additional word. Ads will run in one issue of the publication and on FDLA's website for one quarter.

CONTACT: Maureen Turner, Advertising Director

Phone: (850) 224-0711
advertising@fdla.net
325 John Knox Rd, Ste. L103
Tallahassee, FL 32303

FDLA Business Partners

These companies support the Florida Dental Laboratory Association in our vision to advance the individual and collective success of Florida's dental technology professionals in a changing environment. They are FDLA's Business Partners, and have pledged their support to Florida's dental laboratory profession.

Accurate Metals & Refining, LLC

Phone: 866-973-3463
Fax: 860-871-2925
www.accuraterefining.com
Refiner of precious metal scrap.



Amann Girrbach North America, LP

Phone: 704-837-1404
Fax: 704-837-0763
www.amanngirrbach.us/home
As a pioneer in dental CAD/CAM technology, Amann Girrbach is one of the leading innovators and preferred providers in digital dental prosthetics. With its high degree of expertise in development and commitment to customer orientation, the ambitious company creates sophisticated system solutions for tomorrow's practice routine. Maximum customer satisfaction and a constantly increasing number of partners in over 90 countries worldwide speaks for itself. Amann Girrbach has long since proven itself in the global dental sector as a guarantee for the highest quality products, innovative materials, as well as sophisticated system solutions.



Argen Corporation

Phone: 858-455-7900
Fax: 858-626-8658
www.argen.com
Argen Corporation provides a wide range of alloys to meet any need, as well as refining services.



Atlanta Dental Supply

Phone: 800-218-5447
Fax: 877-614-0597
www.atlantadental.com/lab
Atlanta Dental Supply Lab Division is an employee-owned company servicing the dental lab market for over 145 years. Specializing in denture teeth by Dentsply TruByte, Hereaus Kulzer, Ivoclar, as well as lab supplies by Modern Materials, Garreco, Whip Mix, S S White, Keystone, GC, Dedeco and Shofu. Atlanta Dental also offers lab scanning solutions.



Ivoclar Vivadent, Inc.

Phone: 800-533-6825
Fax: 770-935-4794
www.ivoclarvivadent.com
Leading international manufacturer of high quality dental materials for preventative, restorative and prosthetic dentistry.



Kulzer

Phone: 574-299-5502
Fax: 574-291-2907
www.kulzerus.com
Scrap refining.



KULZER
MITSUI CHEMICALS GROUP

Nowak Dental Supplies, Inc.

Phone: 800-654-7623
www.nowakdental.com
Nowak Dental Supplies is a family owned and operated corporation, which was started in 1944 by Benny and Helen Nowak. Benny began selling to the Dentist and labs, while Helen did the office work. Through their hard work and dedication, they made this company what it is today. Now a third generation of Nowaks, Owners Brandi and Shawn, have entered the business with a vision for the future. At Nowak Dental Supplies, we pride ourselves in customer service and satisfaction. No runaround like some of the larger corporations. We are small enough to care about every order, but large enough to give you the service that you deserve. All in stock orders are shipped the same day as the order is received. We handle all Dental Laboratory and Dental Office products. We also do not charge shipping on orders over fifty dollars. **exceptions for heavy items.*



Panthera Dental

Phone: +1 855-233-0388
www.pantheradental.com
Headquartered in Quebec City, Canada, Panthera Dental is a world leader in CAD/CAM prosthetic implant solutions and dental sleep appliances. The rapid growth of the company is based on the values that are very dear to us, namely highly attentive customer care, quality products, as well as innovation, and on its collaboration with many key opinion leaders in the dentistry field. Both a pioneer and a leader, Panthera Dental has successfully combined creativity, science and know-how to develop its proprietary innovative technology and is now able to offer next-generation products to the dental industry worldwide.



Want information on supporting Florida's dental laboratories by becoming an FDLA Business Partner?
Call the FDLA office at (850) 224-0711 or e-mail membership@fdla.net.



INTRODUCING

Ivoclar Digital Denture Materials



For more information, call us at 1-800-533-6825 in the U.S., 1-800-263-8182 in Canada.
© 2019 Ivoclar Vivadent, Inc. Ivoclar Vivadent, Ivoclar Digital,
SR Vivodent and IvoBase are trademarks of Ivoclar Vivadent, Inc.



DIGITAL SUCCESS STARTS WITH MATERIALS

Take control of your workflow with exceptional digital denture processing materials from Ivoclar Vivadent.

SR Vivodent® CAD - Made from a wear resistant DCL material for the production of permanent denture teeth.

IvoBase® CAD - High impact PMMA disks for high quality, precision denture bases.

IvoBase® CAD Bond - Self-curing polymerization material for a high strength bond and monolithic integrity.



ivoclar
digital®

NADL Vision 21 Meeting

NADL recently held its annual Vision 21 Meeting with more than 300 attendees. Laboratory owners, technicians and manufacturers gathered to learn about the business issues impacting the dental laboratory technology industry.

Wednesday offered pre-meeting workshops with speakers Lee Culp, CDT, discussing lab growth and digital technologies and Tim Torbenson discussing FDA compliance. The meeting officially started on Thursday, with a panel on FDA regulations and enforcement followed by business roundtables. The evening reception honored foundation donors and the newly inaugurated 2019 NADL President Travis Zick.

Friday began with an opening keynote session by Terry McBride, CEO and co-founder of Nettwerk Music Group, Canada's largest independent record label, artist management and music publishing company. He spoke to the similarities between the music industry and the dental laboratory industry.

Patrick Bauer of Heartland Dental provided information on Heartland Dental's business model while Dr. Dean C. Vafiadis of the New York Smile Institute provided a session on meeting dentists' needs in the ever changing future. This was followed by a fireside chat with panel members Brian Ganey of Carbon, BJ Kowalski of ROE Dental Laboratory, Inc.,



CDL, DAMAS, and Heather Voss, CDT, of Legacy Dental Arts, CDL. Heidi Otway, APR, CPRC, of SalterMitchell PR, spoke to current trends in marketing and outlined a process for using data and digital analytics to measure success.

The NADL and NBC Awards Reception ended the day by honoring the successes of those in the profession. For more information on the NADL and NBC Award Winners, visit <https://nadl.org/about-national-association-dental-labs/awards/>.

Saturday began with a session on leadership development by Stephenie Goddard of Glidewell Dental, CDL, who presented on

different leadership types and how each can be successful. Brian P. Moran, CEO and founder of The Execution Company, shared resources for building a plan to accomplish in 12 weeks what others accomplish in 12 months.

All in all, the NADL's Vision 21 Meeting has proven to not just give attendees insight into the future, but the knowledge and resources to create a brighter future.

BACK TO THE PALMS IN 2020!

Mark the Date! NADL's Vision 21 Meeting is set for **Jan. 16-18, 2020** at the newly renovated Palms Casino Resort & Spa.



FDLA South Florida Workshop a Success

The hands-on workshop held on Feb. 2 in Miami was a great success! We would like to thank GC America for sponsoring the session and Chucri Chemali, CDT for his presentation, Initial LiSi Press: Practical, Yet Natural. Special thanks to Zahntechnique for hosting the program. The attendees learned new practices to bring back to their labs.



In Memory of FDLA Board Member, David Giompalo, II, CDT

The FDLA Board of Directors would like to express our condolences to the family of David Giompalo, II, CDT, who passed away Jan. 19. He was the owner and operator of the American Dental Laboratory in Ft. Myers. In 1989, he graduated from Southern College in Orlando and, in 1996, received his Certified Dental Technician license.

He is survived by his sons Joey and Anthony; daughter, Sarah; parents, Elaine and David; sister, Tara (Mike Miller); brother, Jeff (Lynn); niece, Kayla; nephew, Brandon; and special love of his life, Dawn Rodriguez in addition to many aunts, uncles and cousins. He was preceded in death by grandparents, Tony and Margaret Giompalo and Jack and Marie Faull.



Laugh Your Way Through Change

During the upcoming Southern States Symposium & Expo, Jessica Brustad will outline strategies for navigating change. Recently, we caught up with her to chat about how dental laboratory owners can adapt, shift, and respond positively in the moment instead of reacting, hesitating or avoiding.

Dental laboratories are a unique business, but change is universal.


What is it about change that people seem to find so frightening?

First off, fight or flight is real. Even though we aren't being chased by saber tooth tigers anymore, our brain still reacts to change in the same way. Why? Because our brains were designed to keep us safe, not happy! In business, most change creates the fight or flight reaction for two reasons: the unknown (which infers a loss of control) and the reality that with most change comes struggle. No one picks up something new immediately. So that expectation for a decrease in production is real and it doesn't sound like something most business owners want to say yes to!

What are the five biggest take-aways attendees will have after your keynote?

1. Tangible tools to help them focus on flexibility. Flexibility is not innate, it is a practiced skill.
2. Hands-on exercises that we'll do together in session, which they can bring back and practice with their employees.
3. My three rules of improv and how to use them in their business. I have developed a set of rules they can use to deal with any change, instead of sticking to a plan.
4. I'll show them how to use a concept in improv called the game of the scene to focus on the failures and gain more insight from them than they ever thought possible.
5. And finally, my hope is that attendees will walk away with a complete mindset shift that change and failures equal playable gifts!

Dental laboratories are a unique business, but change is universal. What are lessons that other industries have learned about change that could be utilized in ours?

The main lesson I have seen across the many industries and companies I have worked with is this: Technology is here to stay. In other words, it's that adage of "The only thing that's certain is that things will change." Change is scary and nowadays with technology, everyone is waiting in fear for what's going to be their next Uber. What will come by and disrupt my industry? And it doesn't matter if your business is taxis, real estate, or dental. Technology is here and what's crazy is, it's not even really here to stay...it's constantly changing itself and at a rapid pace. Business owners in every industry need to be ready to deal with the speed of today's technology and learn how to adapt quicker than ever to change. This above any other skill is what I perceive to be the biggest indicator of success. 



ATTENDEE REGISTRATION BROCHURE



Southern States SYMPOSIUM & EXPO

presented by **FDLA**

BRINGING THE **BASICS**

INTO THE **FUTURE**



MAY 9 - 11, 2019

RENAISSANCE ORLANDO AT SEAWORLD • ORLANDO, FL



Southern States SYMPOSIUM & EXPO

presented by **FDLA**

MAY 9 - 11, 2019 • RENAISSANCE ORLANDO AT SEAWORLD • ORLANDO, FL

“BRINGING THE BASICS INTO THE FUTURE” is the theme for the 2019 Symposium. Technology continues to change the dental industry. Make plans to attend and learn valuable information to enhance your skills as a dental technician.

The Southern States Symposium & Expo, presented by FDLA, is the largest dental laboratory industry meeting in the country run by a nonprofit association. Everything offered at the Symposium will provide those in attendance an exceptional experience.

BRING YOUR CLIENT DENTISTS!

The Southern States Symposium & Expo courses are specifically designed for the entire dental team. These courses will help both the dentist and the dental technician work together on the latest trends and techniques.

DON'T MISS THIS EXCELLENT OPPORTUNITY *to be a part of one of the industry's largest meetings providing continuing education courses and an outstanding showcase of dental laboratory products and services.*

**OFFERING CDT/RG, AGD AND STATE
OF FLORIDA APPROVED CREDITS**

*Brochure Cover and page 30 images credit:
Chris Peterson, CDT*

2019 SCHEDULE OF EVENTS

THURSDAY – MAY 9

12:30 p.m. – 5:30 p.m. **FDLA Matheson Memorial Golf Tournament**
Shingle Creek Golf Club
Sponsored by: Kulzer

FRIDAY – MAY 10

7:00 a.m. – 6:00 p.m. **Registration Desk Open**

7:30 a.m. – 8:00 a.m. **Morning Beverage Break**
Sponsored by: American Dental Supply, Inc.

8:00 a.m. – 8:30 a.m. **Welcome, Board Installation and President's Speech**

8:30 a.m. – 9:30 a.m. **OPENING KEYNOTE ADDRESS**
Forget the Plan, Stick to the Rules!
Improv Techniques to Help Navigate Change
Presented by: Jessica Brustad
Sponsored by: Argen Corporation

9:30 a.m. – 9:45 a.m. **Mid-Morning Beverage Break**
Sponsored by: Ivoclar Vivadent, Inc.

9:45 a.m. – 11:15 a.m. **FRIDAY MORNING KEYNOTE**
The Future of Digital and Esthetics in the Age of Monolithic Restorations
Presented by: Don Cornell
Sponsored by: Jensen Dental

9:45 a.m. – 11:45 a.m. **OPTIONAL HANDS-ON WORKSHOP**
Building Natural Contour and Emergence in Wax
Presented by: Thomas Zaleske
Sponsored by: Renfert
(Pre-registration and additional fees required – Capacity 15.)

9:45 a.m. – 11:45 a.m. **OPTIONAL HANDS-ON WORKSHOP**
Advances in Digital Workflow for Today's Dental Community – Part I
Presented by: Ron Roche
Sponsored by: Straumann Group
(Pre-registration and additional fees required – Capacity 15. Special Note: This is a 2-day course, participants must attend both days to understand content and receive course credit.)

11:15 a.m. – 11:45 a.m. **Awards Presentation and NADL/NBC Updates**

12:00 p.m. – 12:45 p.m. **FDLA Luncheon**
Sponsored by: Argen Corporation

12:45 p.m. – 4:45 p.m. **HANDS-ON WORKSHOP (continued)**
Building Natural Contour and Emergence in Wax
Presented by: Thomas Zaleske
(Pre-registration and additional fees required.)

12:45 p.m. – 4:45 p.m. **HANDS-ON WORKSHOP (continued)**
Advances in Digital Workflow for Today's Dental Community – Part I
Presented by: Ron Roche
(Pre-registration and additional fees required.)

1:00 p.m. – 3:00 p.m. **FRIDAY AFTERNOON KEYNOTE**
Maximizing Zirconia Profits and Production Efficiencies with Ivoclar Digital
Presented by: Nelson Rego, CDT
Sponsored by: Ivoclar Vivadent, Inc.

3:00 p.m. – 6:00 p.m. **FDLA Expo Hall Open**

3:00 p.m. – 6:00 p.m. **Expo Hall Kickoff Reception**
Sponsored by: Zahn Dental

6:00 p.m. – 8:00 p.m. **FDLA Friday Night Reception at the Renaissance Orlando at SeaWorld**
Reception Sponsored by: Affordable Dentures Dental Laboratories

SATURDAY – MAY 11

7:00 a.m. – 3:30 p.m. **Registration Desk Open**

7:30 a.m. – 8:00 a.m. **Morning Beverage Break**
Sponsored by: Cardinal Rotary Instruments

8:00 a.m. – 9:30 a.m. **A COURSES**

8:00 a.m. – 12:00 p.m. **OPTIONAL HANDS-ON WORKSHOP**
Digital Design for the Production Laboratory – Getting the Most Out of Your Mouse
Presented by: Jason Atwood & Chris Kabot
Sponsored by: Core3d Centres
(Pre-registration and additional fees required – Capacity 16.)

8:00 a.m. – 12:00 p.m. **OPTIONAL HANDS-ON WORKSHOP**
Advances in Digital Workflow for Today's Dental Community – Part II
Presented by: Ron Roche
Sponsored by: Straumann Group
(Pre-registration and additional fees required – Capacity 15. Special Note: This is a 2-day course, participants must attend both days to understand content and receive course credit.)

9:30 a.m. – 3:30 p.m. **FDLA Expo Hall Open**

9:30 a.m. – 11:00 a.m. **Expo Hall Break**

11:00 a.m. – 12:00 p.m. **B COURSES**

12:00 p.m. – 1:00 p.m. **Expo Hall Break / Lunch in Expo Hall**

12:00 p.m. – 1:00 p.m. **Gavel Club Luncheon (Invitation Only)**

1:00 p.m. – 2:00 p.m. **C COURSES**

1:00 p.m. – 3:00 p.m. **HANDS-ON WORKSHOP (continued)**
Digital Design for the Production Laboratory - Getting the Most Out of Your Mouse
Presented by: Jason Atwood & Chris Kabot
(Pre-registration and additional fees required.)

1:00 p.m. – 3:00 p.m. **HANDS-ON WORKSHOP (continued)**
Advances in Digital Workflow for Today's Dental Community – Part II
Presented by: Ron Roche
(Pre-registration and additional fees required.)

1:00 p.m. – 5:30 p.m. **NBC Exams (CDT & RG Exams)**
(Candidates must pre-register with NBC)

2:00 p.m. – 3:30 p.m. **Expo Hall Break / Afternoon Beverage Break**

3:30 p.m. – 4:30 p.m. **Regulatory Standards**
Choose One Course:

COURSE D1: Regulatory Compliance: Insurance for Protecting Your Assets!
Presented by: Gary Morgan, CDT
Sponsored by: Safelink Consulting
(1 Hour Regulatory Standards Credit / 1 Hour Prevention of Medical Errors Credit)

COURSE D2: Florida Laws & Rules Update – A New Approach
Presented by: Bennett Napier, CAE
Sponsored by: FDLA
(1 Hour Regulatory Standards Credit/ 1 Hour Laws & Rules Credit)

Opening Keynote Address

Forget the Plan, Stick to the Rules! Improv Techniques to Help Navigate Change

Presented by: Jessica Brustad

CDT/RG: 1 hour of Professional Development Credit • State of Florida: 1 hour of General Credit

The dental world is becoming increasingly digital, resulting in confusing workflows, obsolete technology, and constant modifications to your business plan. With all of these developments, how can your dental lab keep up with the rapid pace of technology while keeping their sanity? To succeed in a constantly evolving industry, dental labs must remember that one thing is certain: things will CHANGE!

In this talk, Jessica Brustad will outline strategies for navigating change. Jessica will review exercises she uses to adapt to change both personally and professionally. Pulling from her improv comedy experience, she will reveal her approach to what she likes to call “Transformation Opportunities.” Learn how to adapt, shift, and respond positively in the moment instead of reacting, hesitating, or avoiding. She will also walk you through how other companies have leveraged change to revolutionize not only their own business, but their entire industry. Jessica’s mindful practices as well as her extensive experience helping labs shift into the digital workflow are sure to leave you with constructive tools to apply to your business. What’s more, she might even make you laugh!

Jessica Brustad

Jessica Brustad is an Improv & Stand-Up Comedian, Yoga Instructor, and Laughter Yoga Leader. Yup, you heard right - she teaches people how to Laugh! Jessica was also the Product Manager of Equipment at the Argen Corporation, the world’s largest manufacturer of precious dental alloys and the global leader in digital dentistry, from 2013 - 2018. In her five years with Argen, Jessica provided hundreds of labs with the most cost-effective CAD/CAM equipment solutions for their business. Jessica has a passion for helping labs grow and learn how to navigate the new digital dentistry landscape. Her unique style of high energy mixed with mindfulness practices are sure to entertain, educate, and motivate you on your own path to success, balance, and most of all, Joy!



Friday Morning Keynote

The Future of Digital and Esthetics in the Age of Monolithic Restorations

Presented by: Don Cornell

CDT/RG: 1.5 hours of Scientific Credit • State of Florida: 1.5 hours of General Credit

CAD/CAM continues to transform the dental industry. Beyond manufacturing, digital technologies are rapidly reshaping the way we diagnose, treatment plan and communicate. And rapid improvements in CAD/CAM materials have created a growing demand for monolithic restorations. With roughly 85% of all metal free restorations now monolithic, technicians must find new materials and techniques for achieving esthetic outcomes traditionally achieved with ceramic layering.

In this presentation, Mr. Cornell will demonstrate through several patient cases, the growing utility of digital technologies in the laboratory and the dental clinic, and the expanding role of the dental technologist as a result. He will also look critically at CAD/CAM materials, where we are today and where we are headed, and how to achieve exceptional esthetic outcomes with monolithic and minimally layered restorations.

Don Cornell

Mr. Cornell graduated from his Dental Technology Program in 1981. He worked in a small quality laboratory until opening his own lab in 1985. In 1988, Mr. Cornell began lecturing and teaching advanced ceramic techniques to dentists and technicians in the United States. In 1989, he moved to Milwaukee, Wisconsin, to work with Dr. Robert Winter, where he stayed until 1993. Mr. Cornell now operates his laboratory in Madison, Connecticut. He has been extensively published in both dental and technical journals and has lectured and taught advanced ceramic techniques in more than thirty countries around the world to date.



Friday Afternoon Keynote

Maximizing Zirconia Profits and Production Efficiencies with Ivoclar Digital

Presented by: Nelson Rego, CDT

CDT/RG: 2 hours of Scientific Credit • State of Florida: 2 hours of General Credit

Nelson Rego, owner of Smile Designs by Rego dental lab, will present a technical and business overview of the current leading and upcoming CAD/CAM options in zirconia and milling technology. In the zirconia segment, particular emphasis will be placed on the myths and realities of today's available zirconia materials, how to differentiate between zirconia technologies, and reaching an acceptable profit margin. Additionally, Nelson will cover his experiences with recent milling machine introductions, including options for the fast and precise milling of lithium disilicate, as well as options designed for high volume labs in need of automation across multiple working shifts. Finally, the workflow efficiencies found in today's CAM software options will be discussed.

Nelson Rego, CDT

Nelson Rego owns and operates "Smile Designs by Rego," a progressive dental laboratory specializing in ceramics in Santa Fe Springs, California. Nelson and Juan Rego, CDT established the laboratory in 1980. Nelson is a certified dental technician (CDT), who has studied with some of the best dentists and ceramists in dentistry today. Additionally, he is an Accredited Member of the American Academy of Cosmetic Dentistry. He has written over 70 articles pertaining to dental materials and techniques, which have appeared in many of the leading dental journals. He is also an evaluator and speaker for several dental product manufacturers and is the co-creator of Microthin Veneers, which are a no-prep approach to cosmetic dentistry.



Sponsored by:



CONTINUING EDUCATION REQUIREMENTS FOR FLORIDA DENTAL LABS

Effective January 31, 2018, the Department of Health will accept proof of certification by the National Board for Certification in Dental Laboratory Technology to satisfy your continuing education requirements of Rule 64B27-1.003, F.A.C.

64B27-1.003 Continuing Education Requirements. (6) Owners or designated employees that are certified by the National Board for Certification in Dental Laboratory Technology as a Dental Laboratory Technician during the biennium can demonstrate compliance with the continuing education requirements of this rule by entering his or her Certified Dental Technician certification number and submitting a copy of his or her active certification card in the CE tracking system.

What You Need To Know To Be In Compliance

If your designee is a CDT

*Effective January 31, 2018 – CDT's in good standing can upload a copy of their CDT card to CE Broker and waive all other requirements (FL Laws & Rules, Prevention of Medical Errors and General Credits).

If your designee is NOT a CDT

Your laboratory will need 18 hours every two years:

- 1 Hour – FL Laws and Rules of Dental Laboratories and Dental Technicians
- 2 Hours – Prevention of Medical Errors (on either OSHA or FDA)
- 15 Hours – General (any combination)

Who is responsible for attaining all 18 hours of Continuing Education?

Each Florida dental laboratory for their February 2020 state registration renewal must prove that a person employed by the laboratory for one full year at full time status has acquired 18 hours of continuing education credit approved by the Florida Board of Dentistry. Florida requires every business that is registered as a dental laboratory with the Florida Department of Health to document that the owner of the laboratory, or a dental technician who is employed full time by the laboratory, maintains 18 hours of approved continuing education in dental technology every two years.

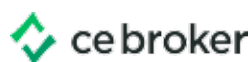
Can laboratories split up the total continuing education hours between employees? Laboratories may not split the required continuing education credit between employees.

- **Where can I get my credits and how do I know if the courses I attend will be accepted by the State of Florida?** The designated laboratory employee may obtain continuing education credits through online offerings, home study or in person courses. It is the responsibility of the laboratory to ensure a course is approved for Florida credits.
- **What is the timeframe in which I must attain all 18 hours?** All of the 18 hours that will be required with the February 2020 registration renewal must have been collected between March 2018 and February 2020. Credits earned before March 2018 will NOT be counted towards the required 18 hours of continuing education required in February 2020.
- **Sworn Affidavit and Certificates of Attendance** Florida laboratories will be required to submit a sworn affidavit with their February 2020 registration renewal listing the date, location, sponsor, subject matter and hours of completed continuing education for the designated employee. The laboratory will also be required to keep backup receipts, certificates of completion or vouchers for the submitted courses in case the state requests the information. The state may request this backup information at any time, or may select laboratories at random to audit.
- The Florida Dental Laboratory Association and the Florida Dental Association are automatically accepted as approved providers of acceptable continuing education credits by the Florida Board of Dentistry.
 - o Suppliers, schools or other entities may be approved by the Florida Board of Dentistry to provide credits, after completing an application, which can currently be found on www.cebroker.com. You may find a list of courses approved by the Florida Board of Dentistry at www.cebroker.com. Online courses and courses outside the state of Florida are eligible for approval.

For more information, please contact FDLA at 850.224.0711. For a list of FDLA sponsored continuing education courses and events, please visit www.fdma.net.

2019 COURSES & EXPO SCHEDULE – SATURDAY, MAY 11

	CERAMICS / CROWN & BRIDGE	REMOVABLES	IMPLANTS	LABORATORY MANAGEMENT	6 HR – OPTIONAL WORKSHOP	6 HR – OPTIONAL WORKSHOP
8:00 A.M. – 9:30 A.M. A COURSES	COURSE A1 Rising Tide of Zirconia: A Balancing Act of Esthetics and Strength to Fit the Patient Needs Russell Giordano II, D.M.D., D.Sc., CAGS Prosthodontics, F.A.D.M., F.A.D.I. <i>Sponsored by:</i> VITA	COURSE A2 Hybrid Bar, All on 4, All on Anything Thomas Zaleske <i>Sponsored by:</i> Matrix Dental Laboratory & Consulting	COURSE A3 Restorative Solutions for Implant Restorations Felix Pages, CDT <i>Sponsored by:</i> VITA	COURSE A4 The Edutainer Presents – “You Have Been Promoted to Manager, Now What?” Anthony Calanico, CDT <i>Sponsored by:</i> FDLA	Digital Design for the Production Laboratory – Getting the Most Out of Your Mouse Jason Atwood and Chris Kabot <i>Sponsored by:</i> Core3d Centres	Advances in Digital Workflow for Today's Dental Community (2-day workshop – cont'd from Friday) Ron Roche <i>Sponsored by:</i> Straumann Group
9:30 A.M. – 11:00 A.M.	EXPO HALL OPEN (Expo Hall Opens at 9:30 A.M.)					
11:00 A.M. – 12:00 P.M. B COURSES	COURSE B1 Designing a Full Arch with White Peak's PEEK and Zirconia Materials Richard Wodzinski <i>Sponsored by:</i> White Peaks	COURSE B2 Creating the Flexible Mindset Bryan Johnson <i>Sponsored by:</i> Snow Rock USA	COURSE B3 Utilizing Digital Tools to Maximize Time and Increase Predictability in Implant Dentistry Luiz H. Gonzaga, DDS, MS <i>Sponsored by:</i> Straumann Group	COURSE B4 Direct, Affordable 3D Printing Chris Frye <i>Sponsored by:</i> Whip Mix Corporation		
12:00 P.M. – 1:00 P.M.	EXPO HALL OPEN (Lunch in Expo Hall)					
1:00 P.M. – 2:00 P.M. C COURSES	COURSE C1 The Power of inLab 18 Jay Black, CDT <i>Sponsored by:</i> Dentsply Sirona	COURSE C2 The “Why” Behind Occlusal Appliances Dr. Kelley Brummett <i>Sponsored by:</i> The Pankey Institute for Advanced Dental Education and FDLA	COURSE C3 The Clear Aligner Craze: What's in it for Me? How to Get Started and Maintain Continued Sustainability Jamie Seabolt <i>Sponsored by:</i> FDLA	COURSE C4 Effective Communication for Supervisors Jackie Morris <i>Sponsored by:</i> FDLA <i>Open to Owners & Managers Only</i>	Digital Design for the Production Laboratory – Getting the Most Out of Your Mouse (cont'd) 1:00 p.m. – 3:00 p.m.	Advances in Digital Workflow for Today's Dental Community (cont'd) 1:00 p.m. – 3:00 p.m.
2:00 P.M. – 3:30 P.M.	EXPO HALL OPEN					
3:30 P.M. – 4:30 P.M. D COURSES (Choose One Course)	COURSE D1 Regulatory Compliance: Insurance for Protecting Your Assets! Gary Morgan, CDT <i>Sponsored by:</i> Safelink Consulting			COURSE D2 Florida Laws & Rules Update – A New Approach Bennett Napier, CAE <i>Sponsored by:</i> FDLA		



FDLA is a State of Florida
Approved CE Provider



CDT/RG Credits

All Southern States Symposium & Expo courses have been approved by the National Board for Certification for CDT/RG Credits.



AGD Credits

Approved PACE Program Provider FAGD/MAGD Credit
Approval does not imply acceptance by a state or provincial board of dentistry or AGD endorsement.

CERAMICS / CROWN & BRIDGE

COURSE # A1 – 8:00 A.M. – 9:30 A.M.

CDT/RC: 1.5 hours of Scientific Credit

State of Florida: 1.5 hours of General Credit

Rising Tide of Zirconia: A Balancing Act of Esthetics and Strength to Fit the Patient Needs

by Russell Giordano II, D.M.D., D.Sc., CAGS Prosthodontics, F.A.D.M., F.A.D.I.

Zirconia is now the primary restorative material used in the dental industry. The reality is that we use zirconia as a universal material. Used for single to multiple unit monolithic restorations, fully-layered to micro-layered, and fixed hybrid frameworks that often replace soft tissue. But with this prolific zirconia market, which material should be used for what treatment plan? What compromises are made when selecting a translucent material over strength? In addition, new machinable restorative materials have unique properties that mandate specific processing techniques, but may offer better long-term results. This lecture will provide insight of material solutions available to meet patient treatment planning, fracture resistance, clinically relevant strength, esthetics, and predictability. Management techniques of new implant material offering force absorbent properties to decrease downstream problematic issues will also be explored. What is cubic-zirconia anyway? Join Dr. Russell Giordano in this fascinating journey of understanding, selecting, and processing of today's premier machinable materials to meet the patient needs.

COURSE # B1 – 11:00 A.M. – 12:00 P.M.

CDT/RC: 1 hour of Scientific Credit

State of Florida: 1 hour of General Credit

Designing a Full Arch with White Peak's PEEK and Zirconia Materials

by Richard Wodzinski

In this course, you will learn how to design a frame work with White Peak's PEEK material. In addition, Mr. Wodzinski will illustrate the appropriate zirconia to use for your cases and why. Attendees will also learn which rotary wheel to use while adjusting with the Peak Performance Rotary.

COURSE # C1 – 1:00 P.M. – 2:00 P.M.

CDT/RC: 1 hour of Scientific Credit

State of Florida: 1 hour of General Credit

The Power of inLab 18

by Jay Black, CDT

This lecture will discuss the exciting new features of inLab SW 18, including the new model builder, 1 to 1 copy, multilayer gingiva, milling Dentures and much more.

Learning Objectives:

1. To have a thorough understanding of the inLab model builder and the different design options available
2. To understand the advantages of using the 1 to 1 copy design option when fabricating larger cases
3. To understand when and how to use the Multilayer Gingiva Design option
4. Utilizing new materials, including, Cercon and Celtra.

REMOVABLES

COURSE # A2 – 8:00 A.M. – 9:30 A.M.

CDT/RC: 1.5 hours of Scientific Credit

State of Florida: 1.5 hours of General Credit

Hybrid Bar, All on 4, All on Anything

by Thomas Zaleske

Is your digital/milling sweet spot narrow or non-existent? Are you still wondering about where and how to start, or how other dental laboratories are fabricating them? Then this is the presentation for you! Let a dental technician who specializes in traditional fabrication, is a NADL education award winner, and dental lab consultant explain and help you navigate through not only the basics, but also the nuances that provide the needed know how and rationale to outsource the bar and traditionally fabricate these rather simple prosthetics.

Presentation will cover:

- Step by step versions of fabrication.
- What to look for when choosing a milling source.
- Communication tools.
- Set-up and processing techniques.
- Characterizing and finishing techniques.

(continued)

REMOVABLES (continued)

COURSE # B2 – 11:00 A.M. – 12:00 P.M.

CDT/RG: 1 hour of Scientific Credit

State of Florida: 1 hour of General Credit

Creating the Flexible Mindset

by Bryan Johnson

This lecture will cover clinical lab communication protocols and guidelines including useful marketing ideas, material choice, clasp considerations and contradictions, adjustment scenarios for clasp and partial design and much more. Also, a brief, but essential hybrid partial breakdown will be discussed, which will aid in helping your clients achieve a flexible mindset for successful partial deliveries from the provisional to the long-term.

COURSE # C2 – 1:00 P.M. – 2:00 P.M.

CDT/RG: 1 hour of Scientific Credit

State of Florida: 1 hour of General Credit

The “Why” Behind Occlusal Appliances

by Dr. Kelley Brummett

Do you ever wonder why dentists make occlusal appliances? This discussion will provide you with the information you need to understand the three main reasons why occlusal appliances are recommended. Occlusal appliances are utilized for diagnosis, pain, and protection. We will discuss the process dentists go through to collect the data for occlusal therapy, and what information you need as the lab to fabricate and make the appliance. We will briefly discuss the different types of appliances and how to improve the dentist/ lab communication. Collaboration is the key to provide a product that the lab, dentist and patient can use and provide the framework for our patient's preferred future.

IMPLANTS

COURSE # A3 – 8:00 A.M. – 9:30 A.M.

CDT/RG: 1.5 hours of Scientific Credit

State of Florida: 1.5 hours of General Credit

Restorative Solutions for Implant Restorations

by Felix Pages, CDT

This lecture will guide the participants in the selection of restorative options for implant-supported restorations. Discussions will include identifying tissue Biotypes and their importance in restoring implants, provisional material used and abutment design for cemented and/or screw retained restorations. Also discussed will be choosing the right material for the final prosthesis, including newer hybrid zirconia and firing protocols for large zirconia implant supported restorations. Milled provisional restorations for implant restorations and importance of occlusion with implant supported restorations to avoid clinical and laboratory problems will be presented. This lecture is for both clinicians and laboratory technologists.

Learning Objectives:

- Understand available implant materials and how to properly choose the right material for the patient.
- Proper emergence profile design to help in esthetics and patient hygiene.
- Understanding of common mistakes of material choice and design.
- Shading techniques to match materials to natural tooth characteristics.

COURSE # B3 – 11:00 A.M. – 12:00 P.M.

CDT/RG: 1 hour of Scientific Credit

State of Florida: 1 hour of General Credit

Utilizing Digital Tools to Maximize Time and Increase Predictability in Implant Dentistry

by Luiz H. Gonzaga, DDS, MS

Implant dentistry has changed considerably since Dr. Branemark published his discovery of osseointegration. The modern implant materials and design have made it possible to achieve predictable survival rates, but unfortunately, sometimes the prosthetic results are far from ideal. The evolution of imaging technology and computer assisted surgery associated with a restorative-driven treatment plan can provide successful outcomes to our patients. Until recently, computers have only been at the periphery of health science, used primarily for research and record keeping. Today, the combination of computer science and medicine is leading to a variety of breakthroughs. This presentation will discuss aspects of treatment planning and technologies that can catalyze better long term success to the implant patient. We will cover Cone Beam Tomography treatment planning, CAD/CAM surgical guides and computer aided surgery.

- Highlight the interdisciplinary approach to planning and treatment for implant patients, with emphasis on the team approach
- Understand the efficiencies of the digital dentistry workflow.
- Learn how to adapt to the rapidly changing dental market to meet patient needs.

(continued)

IMPLANTS (continued)

COURSE # C3 – 1:00 P.M. – 2:00 P.M.

CDT/RG: 1 hour of Scientific Credit

State of Florida: 1 hour of General Credit

The Clear Aligner Craze: What's in it for Me? How to Get Started and Maintain Continued Sustainability

by Jamie Seabolt

This class will showcase the different software programs for clear aligner design, explain the different materials, equipment for fabrication, and lab outsourcing options. We will discuss what doctors like and dislike with emphasis on organization and communication of cases.

LABORATORY MANAGEMENT

COURSE # A4 – 8:00 A.M. – 9:30 A.M.

CDT/RG: 1.5 hours of Professional Development Credit

State of Florida: 1.5 hours of General Credit

The Edutainer Presents – “You Have Been Promoted to Manager, Now What?”

by Anthony Calanico, CDT

This is a show for managers and owners created by a manager. Most managers become managers because they are dependable and work hard, not because they attended any type of management course. This creates a huge problem for new managers and even owners.

Presented in an educational and entertaining way, this session will cover ways to manage yourself and your team. Profits and time management techniques will be discussed. You will also learn what reports to print and why, products to market and why and delegation of tasks and why.

COURSE # B4 – 11:00 A.M. – 12:00 P.M.

CDT/RG: 1 hour of Scientific Credit

State of Florida: 1 hour of General Credit

Direct, Affordable 3D Printing

by Chris Frye

Frye will examine the different types of 3D printing used in the dental industry with a focus on the advantages and disadvantages of each. He also covers how to prepare your laboratory to bring 3D printing in-house and give an in-depth overview of Asiga 3D printers.

COURSE # C4 – 1:00 P.M. – 2:00 P.M.

CDT/RG: 1 hour of Professional Development Credit

State of Florida: 1 hour of General Credit

Effective Communication for Supervisors

by Jackie Morris

The purpose of this session is to assist supervisors in understanding and implementing the benefits of effective workplace communication. By recognizing obstacles to effective communication and improving overall communications skills, this training will empower managers to conduct more effective meetings, employee counseling sessions, and performance evaluations, which help to effectively manage the overall workplace.

(This course is open to Owners and Managers only.)

REGULATORY STANDARDS / PREVENTION OF MEDICAL ERRORS / LAWS & RULES

CHOOSE ONE COURSE:

COURSE # D1 – 3:30 P.M. - 4:30 P.M.

CDT/RG: 1 hour of Regulatory Standards Credit

State of Florida: 1 hour of Prevention of Medical Errors Credit

Regulatory Compliance: Insurance for Protecting Your Assets!

by Gary Morgan, CDT

Complying with regulatory requirements can seem to be a full-time job for dental lab owners. Keeping on top of OSHA, FDA, HIPAA and state regulations can be difficult, but compliance with these regulations can also be the best insurance for protecting your most valuable assets, your business and employees. This program will provide updates on all these key requirements.

COURSE # D2 – 3:30 P.M. - 4:30 P.M.

CDT/RG: 1 hour of Regulatory Standards Credit

State of Florida: 1 hour of Laws & Rules

Florida Laws and Rules Update – A New Approach

by Bennett Napier, CAE

This course will provide information relative to Florida's laws and regulations regarding dental laboratories. This year's presentation is intended to mix it up and material will give attendees an inside look at how the Florida Department of Health staff (at the legislative and Board of Dentistry level) openly work with FDLA on proactive changes to state law and administrative rules that impact the day to day relationship between dental laboratories/technicians and dental offices.

Building Natural Contour and Emergence in Wax



Presented by: Thomas Zaleske

CDT/RG: 6 hours of Scientific Credit
State of Florida: 6 hours of General Credit

Workshop Schedule:

9:45 a.m. – 11:45 a.m. Hands-on Workshop
12:00 p.m. – 12:45 p.m. FDLA Luncheon *(included in registration fees)*
12:45 p.m. – 4:45 p.m. Hands-on Workshop

Sponsored by:



In order to get the best result while contouring a wax denture base, it is important to not only understand how contour relates to tooth emergence and root position, but also depends on the correct technique, instruments and materials to accomplish the task. Creating an imitation of nature is the goal, but providing a wax-up that projects nature, which also balances being cleansable and provides natural support is the real art.

This presentation will explain/demonstrate through hands-on and PowerPoint:

- The instruments best suited for the tasks and how to implement them.
- Wax manipulation.
- Simple colorization of wax to portray value.

- How wax selections effect overall carving.
- Tooth position and imitating contour.
- Contouring is about more than around teeth.
- Being natural vs. being cleansable.
- Tooth shape modification.

Participants Should Bring:

A preset but unfinished upper 1x14 maxillary, and 1X14 mandibular set-up, not necessarily articulated, favorite wax carving tools, wax of their preference, and a portable light. The goal is to have attendees not only learn the techniques that make a more successful wax-up/case in regard to where and how to place wax and obtain supportive, esthetic and cleansable contours, which adds value for not only conventional but implant retained and supported prosthetics.

(Note: Pre-registration and additional fees required – Capacity 15. Participants must pre-register by 4/17/2019.)

Registration Includes: Friday morning Board Installation, President's Speech & Opening Keynote Address, Friday Only Registration for Hands-on Workshop, Friday Lunch, Friday Night Reception, admission to the Expo on Friday & Saturday.

OPTIONAL HANDS-ON WORKSHOP – FRIDAY, MAY 10 & SATURDAY, MAY 11

Advances in Digital Workflow for Today's Dental Community



Presented by: Ron Roche

CDT/RG: 12 hours of Scientific Credit
State of Florida: 12 hours of General Credit

(Special Note: This is a 2-day course, participants must attend both days to understand content and receive course credit.)

(Note: Pre-registration and additional fees required – Capacity 15. Participants must pre-register by 4/17/2019.)

Registration Includes: Friday morning Board Installation, President's Speech & Opening Keynote Address, Friday Only Registration for Hands-on Workshop, Friday Lunch, Friday Night Reception, Saturday Lunch in expo hall, admission to the Expo on Friday & Saturday and Saturday Regulatory Standards course. (Special Note: This is a 2-day course, so participants must attend both days to understand content and receive course credit.)

Workshop Schedule:

FRIDAY, MAY 10

9:45 a.m. – 11:45 a.m. Hands-on Workshop
12:00 p.m. – 12:45 p.m. FDLA Luncheon
(included in registration fees)
12:45 p.m. – 4:45 p.m. Hands-on Workshop

SATURDAY, MAY 11

8:00 a.m. – 12:00 p.m. Hands-on Workshop
12:00 p.m. – 1:00 p.m. Lunch & Expo Hall Break
(included in registration fees)
1:00 p.m. – 3:00 p.m. Hands-on Workshop

(continued opposite page)

Digital Design for the Production Laboratory — Getting the Most Out of Your Mouse

Sponsored by:



Atwood



Kabot

Presented by: Jason Atwood & Chris Kabot

CDT/RG: 6 hours of Scientific Credit

State of Florida: 6 hours of General Credit

Hands-On Demonstration/Lecture Schedule:

8:00 a.m. – 10:00 a.m.	3Shape Hands-On Demonstration
10:00 a.m. – 12:00 p.m.	Lecture with Tips & Tricks
12:00 p.m. – 1:00 p.m.	Lunch & Expo Hall Break (included in registration fees)
1:00 p.m. – 3:00 p.m.	exocad Hands-On Demonstration

This course is for the technician using digital design every day or the lab that wants to get started!

3Shape Tools That You Are Not Using and Should Be

3Shape is a more powerful tool for designing dental restorations than some people recognize. There is a myriad of tools within the software that many designers don't use on a daily basis. These tools were put there to make designing teeth easier, faster and more predictable. During this section, Jason Atwood will showcase a few tools that many of you may not have known existed; perhaps have never used before, or simply have forgotten they were there. The goal is to help you advance the level of designing done with 3Shape in your lab.

Lecture with Tips & Tricks

Our lecture will show you some of the most interesting aspects of digital design, implants surgical guides and dentures. Join us to learn where our industry is going!

exocad-ditive Manufacturing of Digital Dentures

During this session, you will get firsthand experience with designing removable prosthetics with intent to manufacture using today's current 3D printing technologies. Chris Kabot will cover the exocad protocol for designing both monolithic and 2-part try-ins as well as tips and tricks for how to avoid some of the pitfalls out there with 3D printing.

(Note: Participants do not need to bring any items for this workshop.)

(Note: Pre-registration and additional fees required – Capacity 16. Participants must pre-register by 4/17/2019.)

Registration Includes: Saturday Only Registration for Hands-on Workshop, Regulatory Standards Course, Saturday Lunch, admission to the Expo on Saturday.

OPTIONAL HANDS-ON WORKSHOP – FRIDAY, MAY 10 & SATURDAY, MAY 11

Advances in Digital Workflow for Today's Dental Community (continued)

Technological advances in digital dentistry are rapidly changing the way the dental team practices in the operator and laboratory. Predictable treatment success depends on comprehensive assessment from both surgical and prosthetic perspectives as well as selection of appropriate implants and custom restorative components.

Day 1: Advances in Intra-Oral Scanning / Digital Impression Technology

This day will review current technologies in intra-oral scanning, including recent advancements. Users will have the opportunity to get hands-on experience with the latest technology options.

Day 2: Integrated Surgical & Prosthetic Treatment Planning for Implant Therapy

This course will review recent advances in digital technology: surgical planning software for implant placement, prosthetic design software for digital waxups, and the integration possibilities between the two,

including model-free milled immediate provisionals. Special emphasis will be given to the relationship between the dentist and the lab and the many benefits available to the treatment team when using digital dentistry solutions.

Learning objectives:

- Understand the data capture requirements for successful digital treatment planning
- Understand the prosthetic design process in the digital world
- Understand the digital implant treatment planning workflow
- Understand the process of integration between the digital prosthetic plan and the surgical plan
- Understand the digital workflow between the dental office and lab

(Note: Participants should bring a PC laptop with them for this workshop.)

Sponsored by:



HANDS-ON TABLE CLINICS IN EXPO HALL

BACK BY POPULAR DEMAND!

FDLA provides the opportunity to earn CE during the Expo Hall hours. The table clinics will take place in the sponsored island booths during expo hall hours on both Friday, May 10 and Saturday, May 11. The following sponsors will be presenting table clinics in the Expo Hall:



FDLA MATHESON MEMORIAL GOLF TOURNAMENT

SHINGLE CREEK GOLF CLUB

9939 Universal Boulevard, Orlando, FL 32819

407.996.9933 www.ShingleCreekGolf.com

Thursday, May 9 • 12:30 p.m. – 5:30 p.m.

(Additional registration and fees required.)

Shingle Creek Golf Club presents challenges to players of all levels and has consistently been rated as one of Orlando's best golf courses since opening in 2003. In 2016, the golf club partnered with the renowned Arnold Palmer Design Company to create a new Arnold Palmer Signature Golf Course. The course is known for its large, undulating greens, plush fairways and an abundance of water hazards. Make plans to participate in this great networking opportunity!

Tournament Fees Include:

- Greens/Cart fees
- Unlimited practice balls
- Boxed lunch for each golfer
- Prizes awarded for top scoring team, longest drive and closest to the pin

Sponsored by:



KULZER
MITSUI CHEMICALS GROUP



KEYNOTE SPEAKERS

(as of 2/27/19)



FRIDAY LUNCHEON



MATHESON MEMORIAL GOLF TOURNAMENT



KULZER
MITSUI CHEMICALS GROUP

EXPO KICKOFF RECEPTION



FRIDAY NIGHT RECEPTION



ROOM KEY CARDS



TRADE SHOW BAGS



FRIDAY MORNING BREAK



FRIDAY MID-MORNING BREAK



SATURDAY MORNING BREAK



ATTENDEE LANYARDS



EXHIBITORS

(as of 2/27/19)

3D BioCad

Affordable Dentures & Implants

Aidite (Qinhuangdao) Technology Co., Ltd

Americana Dental, Inc.

Anaxdent North America

Argen Corporation

Aspen Dental

Atlanta Dental Supply

Brasseler USA

CAD BLU Inc.

Cardinal Rotary Instruments

Dentsply Sirona

Digital Dental

Esthetic Professionals

EvoDent

Garfield Refining Company

GC America Inc.

Ivoclar Vivadent, Inc.

Jensen Dental

Kettenbach

Kulzer

Mastercut Tool Corp

McFatter Technical College

NADL / NBC / FDLT

Nobilium

Nowak Dental

Panthera Dental

PREAT Corporation

Proto3000 Inc.

Renfert USA

Shenzhen Upcera Dental Technologies, Co., Ltd.

Spades Cosmetics

Sterngold

Straumann

TruAbutment Inc.

VITA

Whip Mix Corporation

XPdent Corp

Zahn Dental

ZIMMER Biomet Dental

HOTEL INFORMATION

Renaissance Orlando at SeaWorld

The 2019 FDLA Southern States Symposium & Expo will be held at the Renaissance Orlando at SeaWorld, located across from SeaWorld® and adjacent to Aquatica and Discovery Cove. From the moment you step into the resort's lush, tropical landscape, you will feel relaxed and refreshed as you immerse yourself into the flowing, aquatic-themed design. Enjoy modern accommodations, family-friendly amenities and the on-site waterpark R Aqua Zone. Guests can enjoy a cocktail by the pool, pampering treatment at the spa or explore International Drive and much more.

The FDLA has secured a special reduced rate of **\$159** inclusive of the resort fee for FDLA attendees. Also included in your rate are 50% discount on in-room high speed internet, complimentary self-parking and access to 24-hour fitness center. Make your hotel reservations directly with the Renaissance by calling **407.351.5555**. Be sure to mention you are with FDLA and make your reservations by **Wednesday, April 17, 2019** to receive this special reduced rate. NOTE: The association can only reserve a certain number rooms at the discounted rate. Once the room block is sold out, even if that day is prior to the cutoff date, a higher prevailing room rate will apply. Make your reservations today!

Please continue your support of the FDLA by staying at the host hotel. For more information, visit www.renaissanceseaworldorlando.com to learn more about this wonderful resort!






Great Benefits of Staying at the FDLA Host Hotel:

- Special reduced rate of \$159 for FDLA!
- The expo hall is minutes away from your hotel room.
- Increased networking time with attendees in the hotel's restaurants and lounge areas!
- Across the street from SeaWorld Orlando

Need additional information on the 2019 Symposium & Expo? Please visit www.fdma.net

REGISTRATION INFORMATION AND EXPO POLICIES

3 Ways to Register:

-  **ONLINE:** Go to www.fdma.net, click on the conference tab, then register online. Use your Master Card, Visa or AMEX.
-  **FAX:** This form with credit card information to (850) 906-0077
-  **MAIL:** Registration Form, **Postmarked by April 17, 2019** to: 2018 Southern States Symposium & Expo (FDLA), 1401 Maclay Commerce Dr., Tallahassee, Florida 32312



Questions? For more information, contact FDLA's Southern States Symposium office by phone at 866.873.3352 or email fdlareg@mcraemeetings.com.

Refund Policy: Written notification is required for all refunds. Refund requests received by **April 17, 2019** will receive a refund less a \$25 administrative fee. **No refunds will be paid after April 17, 2019.**

Age Restrictions & Stroller Policy: No children in strollers or children under the age of 15 will be allowed access into the exhibit hall during booth setup, show hours or during booth dismantling.

ADA: If you have special needs that require accommodations, please notify FDLA in writing no later than **April 17, 2019.**

Southern States Symposium & Expo Dress Code: The dress code for the 2019 Southern States Symposium & Expo daytime workshops and courses is business casual (no t-shirts, tank tops or flip flops please).

2019 SOUTHERN STATES SYMPOSIUM & EXPO REGISTRATION FORM

Please print or type. Please photocopy form for additional registrants. See page 42 for options to register.



First Name: _____ Last Name: _____

Do you influence purchasing decisions in your lab? ☐ YES ☐ NO ☐ CDT ☐ RG ☐ DDS ☐ DMD ☐ Other: _____

State of FL Dental Laboratory/Dentist License Number (if applicable): _____ CDT/RG Number (if applicable): _____

Laboratory, Dental Practice or Organization: _____ ☐ CDL ☐ DAMAS

Address: _____

City: _____ State: _____ Zip: _____

Phone: _____ E-mail: _____

NOTE: For CDT/RG Registrations, you MUST include your CDT/RG Number to receive CE credits for attending the courses.

FULL REGISTRATION – MAY 10 & 11

Includes: Friday Keynote Sessions, Friday Lunch, Friday Night Reception, choice of Saturday courses, Saturday Lunch, unlimited admission to the Expo on Friday and Saturday

- ☐ FDIA Member..... First Member: \$295 (\$325 after 4/17/19)
☐ Each Additional Member from Same Lab: \$275 (Pre-registration Only)
☐ CDTs and Dentists.....\$345 (\$375 after 4/17/19)
☐ Non-Member\$575

- ☐ Add Friday Workshop*\$150
☐ Add Saturday Workshop*\$150
*(Full Registration Required – Must Pre-register to attend)

Indicate Workshop(s): _____

Subtotal Due: \$ _____

FRIDAY ONLY REGISTRATION – MAY 10

Includes: Friday Keynote Sessions, Friday Lunch, Friday Night Reception, choice of Friday courses, unlimited admission to the Expo on Friday and Saturday

- ☐ FDIA Member..... First Member: \$195 (\$225 after 4/17/19)
☐ Each Additional Member from Same Lab: \$175 (Pre-registration Only)
☐ CDTs and Dentists.....\$245 (\$275 after 4/17/19)
☐ Non-Member\$450

Subtotal Due: \$ _____

SATURDAY ONLY REGISTRATION – MAY 11

Includes: Choice of Saturday courses, Saturday Lunch, unlimited admission to the Expo on Friday and Saturday

- ☐ FDIA Member..... First Member: \$175 (\$200 after 4/17/19)
☐ Each Additional Member from Same Lab: \$155 (Pre-registration Only)
☐ CDTs and Dentists\$225 (\$250 after 4/17/19)
☐ Non-Member\$450

Subtotal Due: \$ _____

EXHIBITS ONLY REGISTRATION

(Pass good for entry into Expo either Friday, Saturday or both. Must register and receive a name badge to enter Expo Hall.)

- ☐ FDIA Member.....\$0 No Charge ☐ Non-Member\$50

ADDITIONAL EVENT OPTIONS

- ☐ FDIA Friday Luncheon\$35 each ticket
☐ FDIA Friday Night Reception\$50 each ticket
☐ Saturday Box Lunch.....\$35 each ticket

GOLF TOURNAMENT – THURSDAY – MAY 9

FDIA Matheson Memorial Golf Tournament

(See pg. 12 for more details. Must register and pay in advance.)

- ☐ Conference Registrant or Exhibitor.....\$99
☐ Golf Only\$115

Handicap/Estimated Average Score _____

Foursome Requests: _____

HANDS-ON WORKSHOPS You must register in advance by April 17, 2019 for all Hands-on Workshops. Workshops have limited capacities and are on a first-come, first-served basis. Onsite registrations will not be accepted. See pages 38-39 for additional workshop information.

6 HR – BUILDING NATURAL CONTOUR AND EMERGENCE IN WAX FRIDAY– MAY 10

Includes: Friday Only Registration for Hands-on Workshop, Friday Lunch, Friday Night Reception, admission to the Expo on Friday and Saturday

- ☐ FDIA Member.....\$250 ☐ Non-Member\$325
☐ CDTs and Dentists.....\$275

6 HR – DIGITAL DESIGN FOR THE PRODUCTION LABORATORY - GETTING THE MOST OUT OF YOUR MOUSE SATURDAY– MAY 11

Includes: Saturday Only Registration for Hands-on Workshop, Regulatory Standards Course, Saturday Lunch, admission to the Expo on Saturday

- ☐ FDIA Member.....\$250 ☐ Non-Member\$325
☐ CDTs and Dentists.....\$275

12 HR WORKSHOP – ADVANCES IN DIGITAL WORKFLOW FOR TODAY'S DENTAL COMMUNITY MAY 10 & MAY 11

Includes: Friday & Saturday Only Registration for Hands-on Workshop, Friday Lunch, Friday Night Reception, Saturday Lunch, admission to the Expo on Friday and Saturday, Saturday Regulatory Standards Course.

NOTE: This is a 2-day course, participants must attend both days to understand content and receive course credit.

- ☐ FDIA Member.....\$495 ☐ Non-Member\$595
☐ CDTs and Dentists.....\$525

Subtotal Due: \$ _____

Payment:

SUB-TOTAL DUE FOR SYMPOSIUM & EXPO: \$ _____

FOUNDATION FOR DENTAL LABORATORY TECHNOLOGY DONATION: \$ _____

TOTAL ENCLOSED: \$ _____

☐ Check (payable to FDIA) Check # _____

Credit Card: ☐ MC ☐ Visa ☐ AmEx Charge \$ _____

CC #: _____

Exp: _____ Security Code*: _____

Cardholder Signature: _____

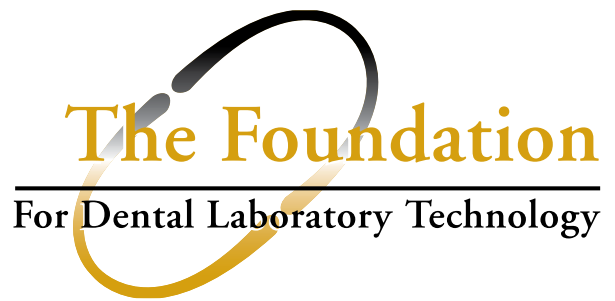
Print Name: _____

Billing Address (if different from above): _____

*The 3 digit number on the back of the card. AMEX: The 4 digit number on the front of your card.

Please refer to page 42 for registration information and expo policies.

For more information, contact FDIA's Southern States Symposium office by phone at 866.873.3352 or email fdlareg@mcraemeetings.com.



Join us in Building the Future of Dental Technology

At the 2019 Southern States Symposium & Expo, FDLA will join together with the Foundation for Dental Laboratory Technology to increase awareness of the opportunities for enhancing education in the industry.

The Foundation is a 501(c)(3) educational non-profit created in 2008 to advocate and raise awareness of the necessity of dental laboratory technology education for dental technicians and other effected members of the dental team. The Foundation provides grants and scholarships to interested candidates for advanced education and develops educational programs that are relevant and accessible to both dental technicians working in the laboratory as well as dental laboratory technology students.

My Commitment Pledge

We need your help. Make an investment in the future of your profession by contributing to The Foundation. As a contributor, you will be recognized by having your name listed on our website www.dentallabfoundation.org, but more importantly, you will carry the knowledge that you made an investment that will positively impact the future of your profession.

Donor Information: (Who and how you want your name recognized. This information may be published.)

(Salutation: ☐ Mr. ☐ Ms. ☐ Mrs. ☐ Dr. ☐ Other _____) Name _____

☐ CDT ☐ RG ☐ RDT ☐ DDS ☐ DMD ☐ Other: _____

Company _____ ☐ CDL ☐ DAMAS

Address _____

City/State/Zip _____

Phone _____ Fax _____

Email _____

Payment Method: (Check one option below)

☐ Please find enclosed check payable to the *Foundation for Dental Laboratory Technology* in the amount of \$_____. (For a one-time donation.)

☐ Please contact me regarding a multi-year contribution.

☐ Please charge my credit card (☐ VISA ☐ MasterCard ☐ AMEX) in the amount of \$_____. (For a one-time donation.)

Card# _____ Exp. Date _____ Security Code* _____

*3-digit number on reverse side of most cards, 4-digit number on front for AMEX only

Cardholder Name _____ Phone # _____

Billing Address (if different from above) _____

Signature _____ Date _____

The Foundation for Dental Laboratory Technology is exempt under section 501(c)(3) of the Internal Revenue Code, making your contributions tax-deductible.

The Foundation for Dental Laboratory Technology



Introducing

MEMBERSHIP LEVELS

Get The Best Value
For Your Dollar



With our new membership levels, you can **COVER ALL OF YOUR EMPLOYEES** as members of FDIA under your laboratory's membership.



The level you choose allows that many employees to **ATTEND OUR ANNUAL SYMPOSIUM, DISTRICT WORKSHOPS, AND OTHER MEETINGS** at the greatly reduced FDIA Member rate.

Each level of membership is designed to **SAVE YOU MONEY** and provide membership benefits to as many employees as you choose to cover.

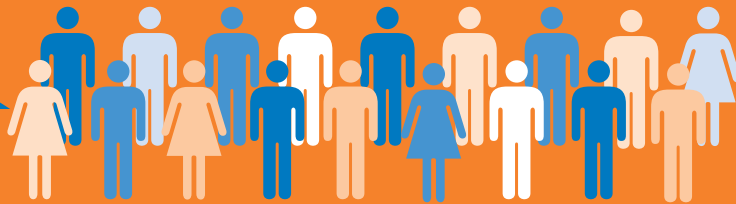


Your laboratory will be eligible for all of the **MEMBERSHIP BENEFITS** listed on the next page. Each employee under your laboratory's membership will also receive *focus* magazine.



Select Your Level

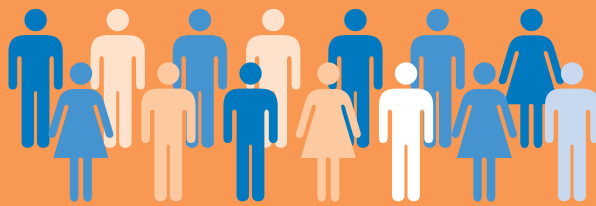
15+
Members



\$750

Unlimited savings*

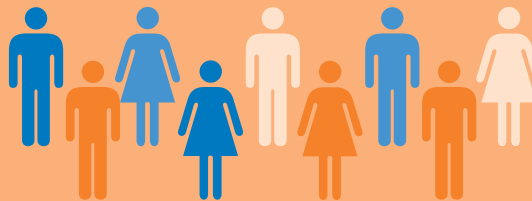
10-14
Members



\$535

up to
\$110 savings*

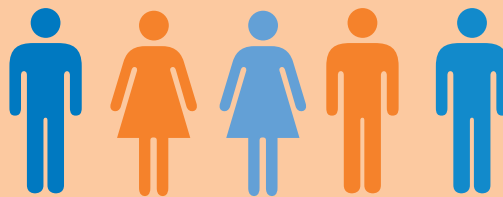
6-9
Members



\$435

up to
\$150 savings*

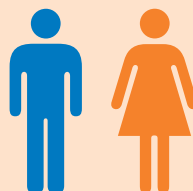
3-5
Members



\$335

up to
\$90 savings*

1-2
Members



\$235

up to
\$40 savings*

* Estimated savings based on previous discount membership incentive plans.



Florida Dental Laboratory Association Membership Application

Any commercial dental laboratory registered by the State of Florida Department of Health is eligible. Membership shall be in the name of the laboratory as registered by the State of Florida. The owner, partner or designated representative shall represent the laboratory in meetings and is eligible for elective office and voting privileges. Dental laboratories located outside of the state of Florida may join as an Affiliate member using this form.

Name: _____ ☐ CDT

Laboratory Name: _____ ☐ CDL ☐ DAMAS

Laboratory Owner Name: _____ ☐ CDT

Address: _____

City: _____ State: _____ Zip: _____

Phone: _____ Toll Free: _____ Fax: _____

E-mail: _____ Website: _____

Florida Department of Health Laboratory License Number: (if applicable) _____

Payment Information

Total Enclosed: \$ _____

☐ Check, payable to FDLA

☐ Visa

☐ MasterCard

☐ AMEX

Card No.: _____ Security Code*: _____ Expires: _____

*This is the three digit number found on the back of your card in the signature area. AMEX - This is the four digit number found on the front of your card.

Name as it appears on card: _____ Signature: _____

Credit Card Billing Address: _____

RETURN APPLICATION TO FDLA at: 325 John Knox Road Ste L 103, Tallahassee, FL 32303 OR Fax with credit card payment to (850) 222-3019.

Your Laboratory Members:

Please list the name and email address of your employees based on the membership level you chose.
(Please note: the primary contact that you listed above will be included in the total count.)

Name: _____ Email: _____

Name: _____ Email: _____

Name: _____ Email: _____

Name: _____ Email: _____

Name: _____ Email: _____

Name: _____ Email: _____

Name: _____ Email: _____

Name: _____ Email: _____

Name: _____ Email: _____

Name: _____ Email: _____

Name: _____ Email: _____

Name: _____ Email: _____

Name: _____ Email: _____

Name: _____ Email: _____

Name: _____ Email: _____

Name: _____ Email: _____

Name: _____ Email: _____

Name: _____ Email: _____

Name: _____ Email: _____

Name: _____ Email: _____

Name: _____ Email: _____

Or Join as a Student:

Open to any students at Florida schools offering a dental technology program.

☐ FDLA Student Membership: \$15

Select Your Level

Check One: ✓

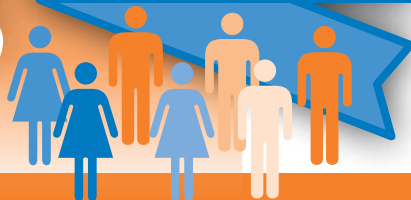
☐ 1-2 Members: \$235

☐ 3-5 Members: \$335

☐ 6-9 Members: \$435

☐ 10-14 Members: \$535

☐ 15+ Members: \$750



Lab Supplies and Teeth GREAT Prices!



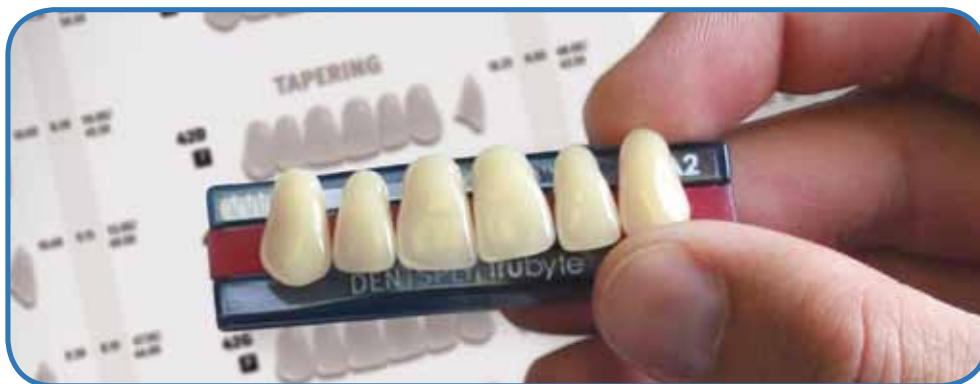
The Atlanta Dental Lab Division
is growing to meet your needs!

You will now see our Lab Division called...



- Guaranteed Low Prices
- Same-Day Shipping
- Next-Day Arrival Anywhere in the USA
- Professional Lab Customer Service Agents
- We carry all major brands: Trubyte, Heraeus, Whip Mix, Keystone, Garreco, Snow Rock, Renfert, NSK, and many more!

Call 800.218.5447



Ask for Maggie, Indira, Edina or Zenaida

800.218.5447 • www.atlantadental.com
1650 Satellite Blvd • Duluth, GA 30097

 **AURIDENT, INC.**

**EASY-TO-USE,
HASSLE-FREE
DELTA
ZIRCONIA**



- ✓ TRANSLUCENT
- ✓ HIGH-STRENGTH
- ✓ DEPENDABLE
- ✓ AFFORDABLE

**Call Now to Order
800-422-7373**

Se habla Español 한국어로 문의해 주세요

 **AURIDENT, INC.**
aurident.com

